

Giotto

HOOD

Pre-installation and installation manual

KG7



This hood has been designed and constructed with the utmost care and undergone rigorous tests in our laboratories and for this reason we guarantee its absolute safety and functionality.

The installation must be carried out by **professionally qualified** staff, that can take responsibility for the installation and guarantee the best safe operating conditions.

Before the installation, read the content of this manual **carefully**: it contains important information regarding product assembly and safety regulations.

Technical service

The Dealer can solve any technical problem regarding installation.

Do not hesitate to contact him in case of doubt.

CUPPONE 1963
Cuppone F.lli S.r.l.
Via Sile, 36
31057 Silea (TV) - ITALY
T +39 0422 361143
F +39 0422 360993
info@cuppone.com - www.cuppone.com

1	CHECKS BEFORE PURCHASING	3
	Checks before purchasing	4
2	TECHNICAL DATA	5
	Giotto KGT hood technical data	6
	Giotto GT 110 oven technical data with hood	7
	Giotto GT 140 oven technical data with hood	8
3	INSTALLATION	9
	Symbols used in the manual and on the labels applied to the machine	9
	Transport	10
	Preliminary operations	10
	Serial number plate reading	10
	Positioning on the oven below	11
	Smoke extraction	12
	Hood-oven electrical connection	13
	Wiring diagram	14
	Pre-testing and final inspection	15
	Checking the operation	15

1 CHECKS BEFORE PURCHASING

Before purchasing the hood and before installing it, check the following conditions, necessary for the correct installation, operation and maintenance of the hood.

A	Transport (Owner's inspection)
✓	Make sure that, on the day when you receive the hood or it is installed:
	<ul style="list-style-type: none"> lifting equipment is available that can handle the appliance safely (check weight and dimensions in the following pages), together with staff qualified to carry out this operation;
	<ul style="list-style-type: none"> personal protection equipment is available (e.g. safety shoes, gloves, etc.)

B	Installation room (Owner's inspection)
✓	Make sure that:
	<ul style="list-style-type: none"> the floor of the installation room is fireproof, perfectly flat and capable of withstanding the weight of the hood and underlying oven.
	<ul style="list-style-type: none"> the installation room: <ul style="list-style-type: none"> is dedicated and suitable to cooking food; has adequate air ventilation; complies with the current regulations on health and safety and systems in the workplace; is protected from the weather; has a maximum temperature of between +5° (41°F) and +35°C (95°F); has a maximum humidity of 70%.
	<ul style="list-style-type: none"> the appliance easily passes through doorways;
	<ul style="list-style-type: none"> between the hood and the ceiling there is a distance of about 600 mm [24 in.] (shorter distances could damage ceilings made of particularly delicate and heat sensitive materials - e.g. wood)
	<ul style="list-style-type: none"> there is adequate ventilation according to the regulations in force in the Country of installation. If this is not the case, a $\varnothing 14$ cm [$\varnothing 5.51$ in.] air intake is mandatory, communicating with the outside or a ventilated room (i.e. storeroom, attic, garage, basement).

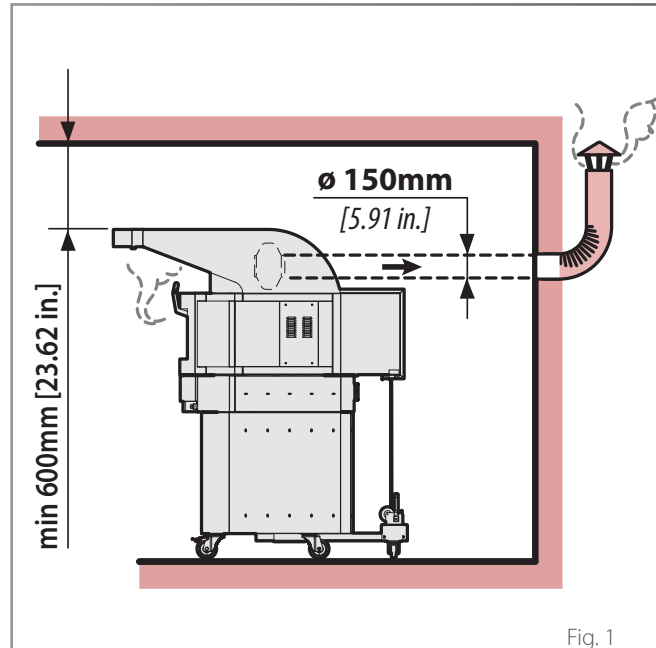


Fig. 1



When choosing the positioning room, take into account that the appliance must be **easy to move** for any extraordinary maintenance: be careful since any brickwork after installation (e.g.: wall construction, door replacement with narrower ones, renovations, etc.) do not hamper movements.

C Electrical connection

To work, hoods do not need a wall socket; in fact they have a connector that must be inserted into a socket in the oven below ► **Fig. 2**

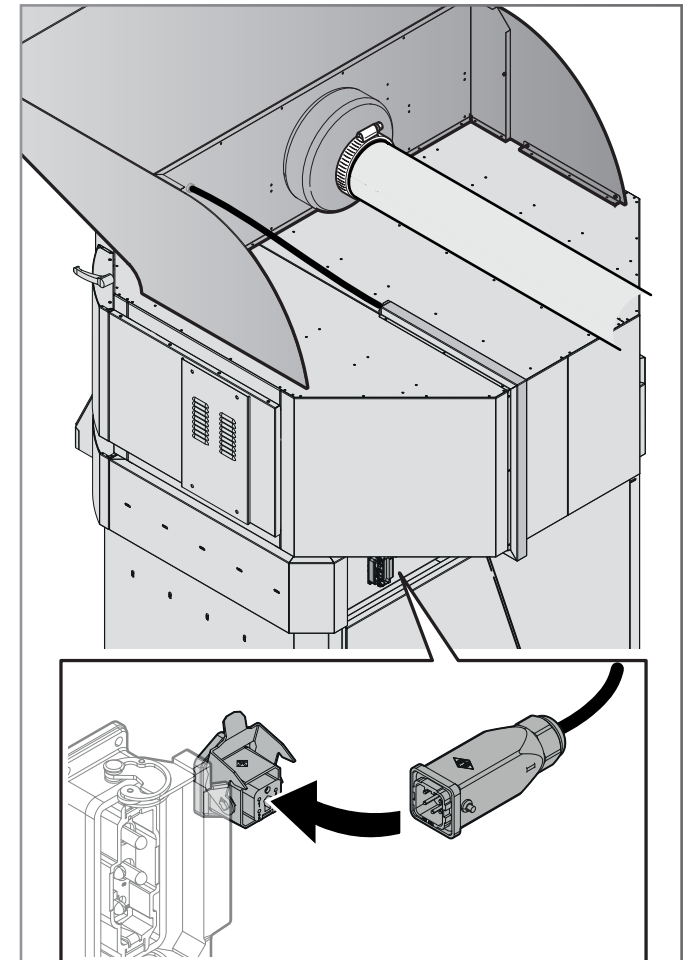


Fig. 2

Checks before purchasing

D Smoke evacuation (Owner's inspection)

The oven is fitted with an adjustable exhaust in the top to get rid of the steam from the cooking chamber. This steam, together with the one from the door during the work phases, **must be conveyed outside** through the hood.

There are two hood variants: the **ventilation** versions have a built-in 5-speed suction motor while the user's exhaust system can be installed in **neutral** versions.

► Fig. 3

The following must be assembled during installation:

- the tube **(B)** and the collar **(C)** (supplied by the Manufacturer)
- a flue **(E)** blocking it with a metallic clamp **(D)** (NEITHER supplied by the Manufacturer).

The flue **(E)** must:

- be exclusively used by the equipment,
- have a **Ø150 mm [5.91 in.]** (to guarantee correct draught up to a maximum of 20 linear metres [787.4 in.] , three curves and a terminal on the roof),
- meet current regulations.

The recommended material is stainless steel resistant to high temperatures.



Provide a condensate drain (not supplied) to permit normal control and draining operations.

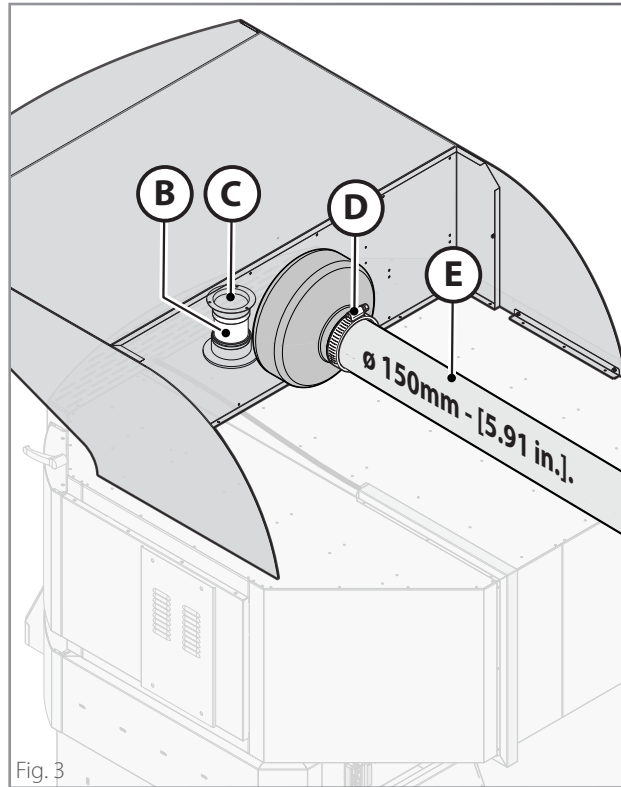


Fig. 3

Key

- A** Oven smoke exhaust
- B** Hood power cable protection
- C** Hood LED
- D** Hood filters
- E** Extraction hood
- F** Hood fume inlet tube
- G** Hood extractor
- H** Plug for the connection of the hood to the oven
- I** Hood plug

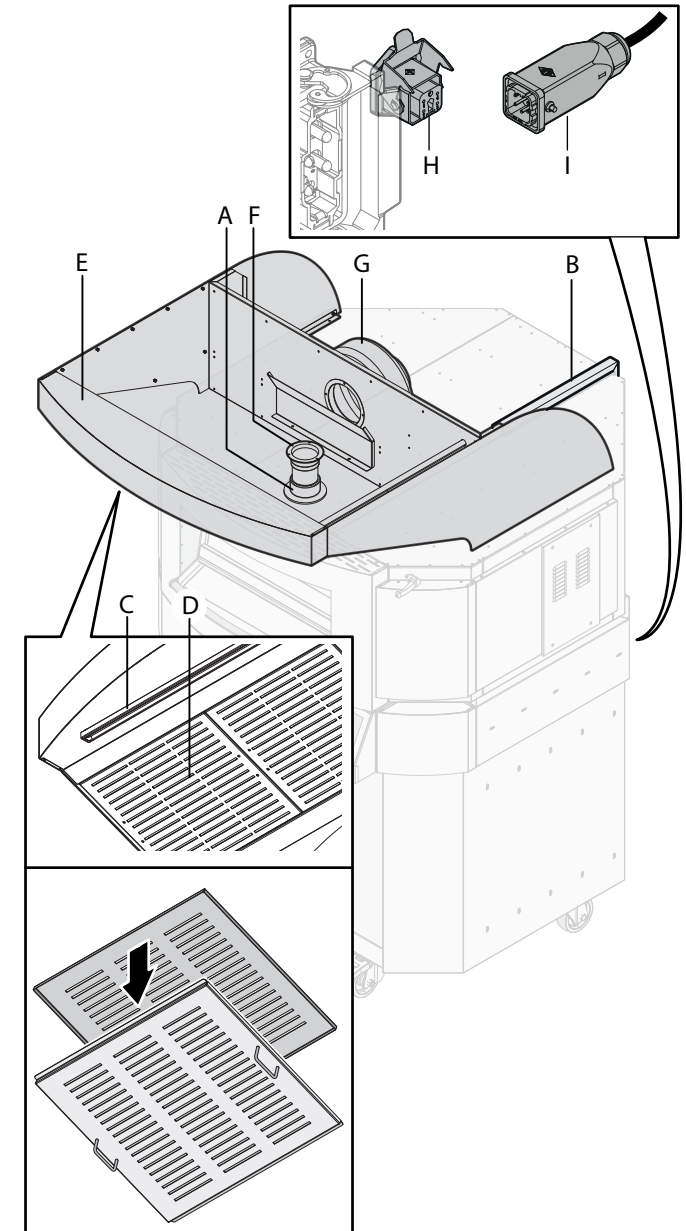


Fig. 4

2 TECHNICAL DATA

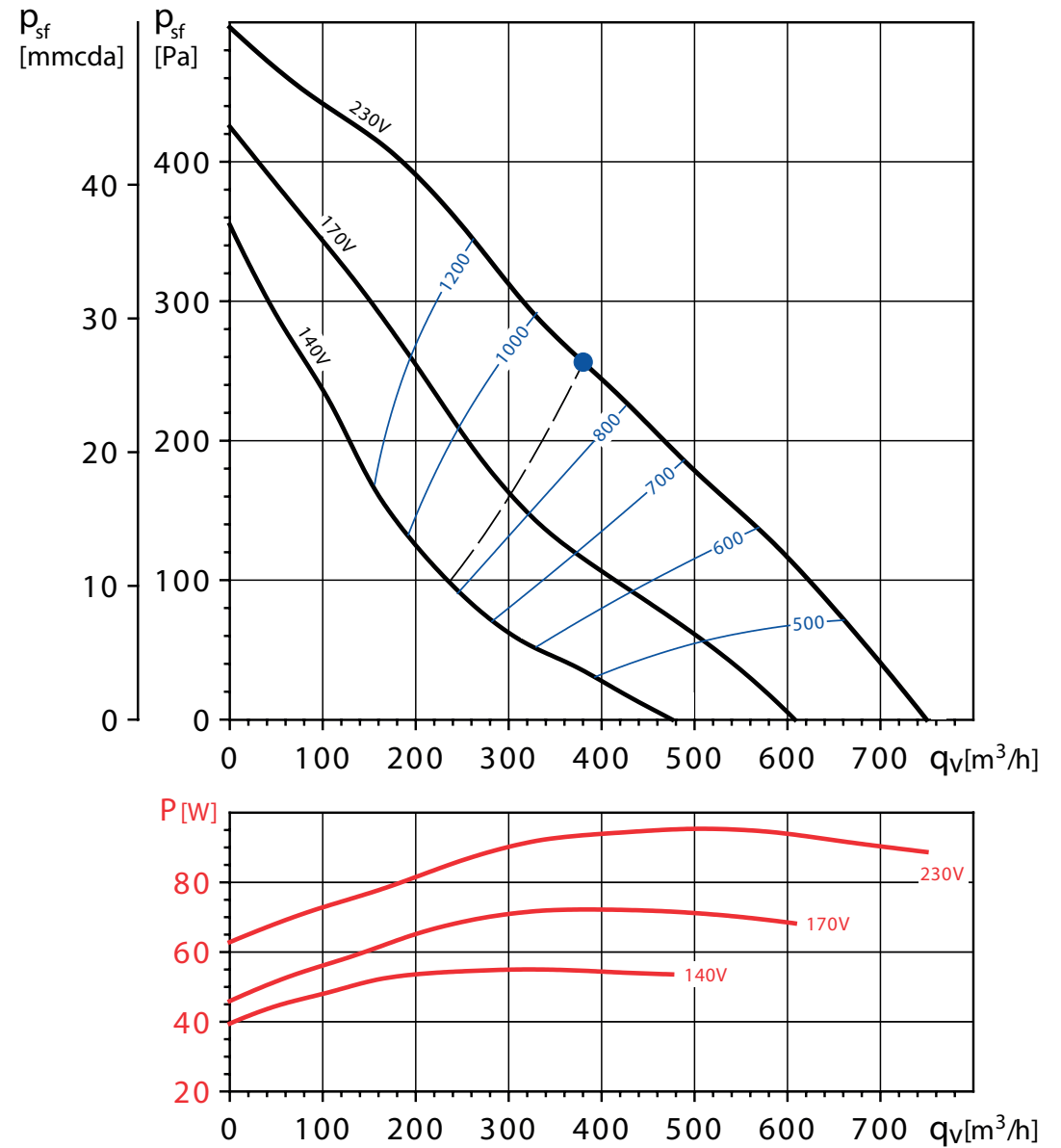
Fan technical data

Characteristic curves - acoustic features

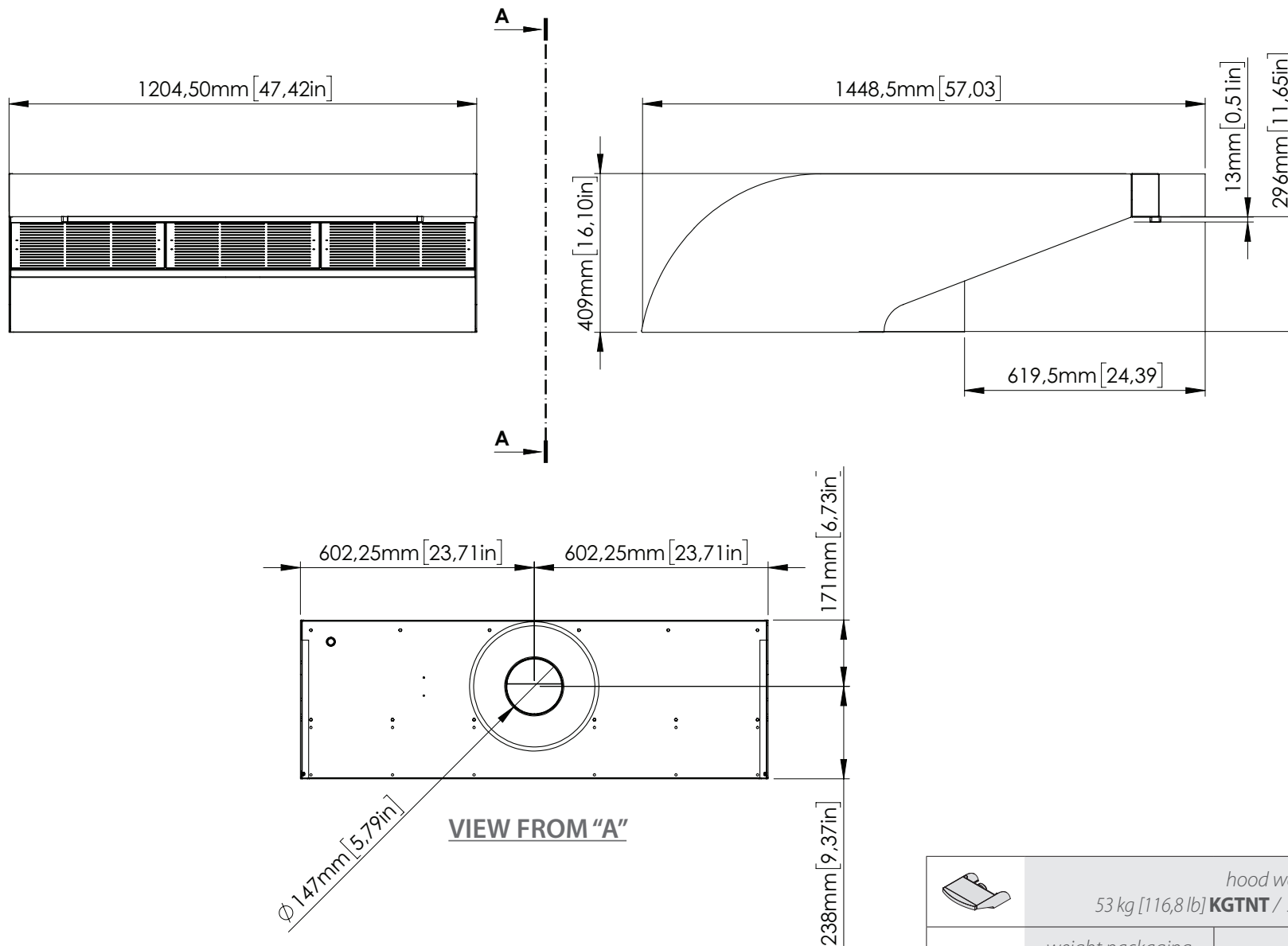
- q_v : flow in m^3/h
 - p_{sf} : Static pressure in mmcda and Pa
 - P: Incoming power in W
 - SFP: Specific power factor in $W/m^3/s$ (blue curves)
- Compliance data with ISO 5810

Sound pressure level* (dB(A))		
Extraction	Expulsion	Radiated
59	56	42

* Sound pressure level measured in free field at 1.5 meters, at maximum air volume.

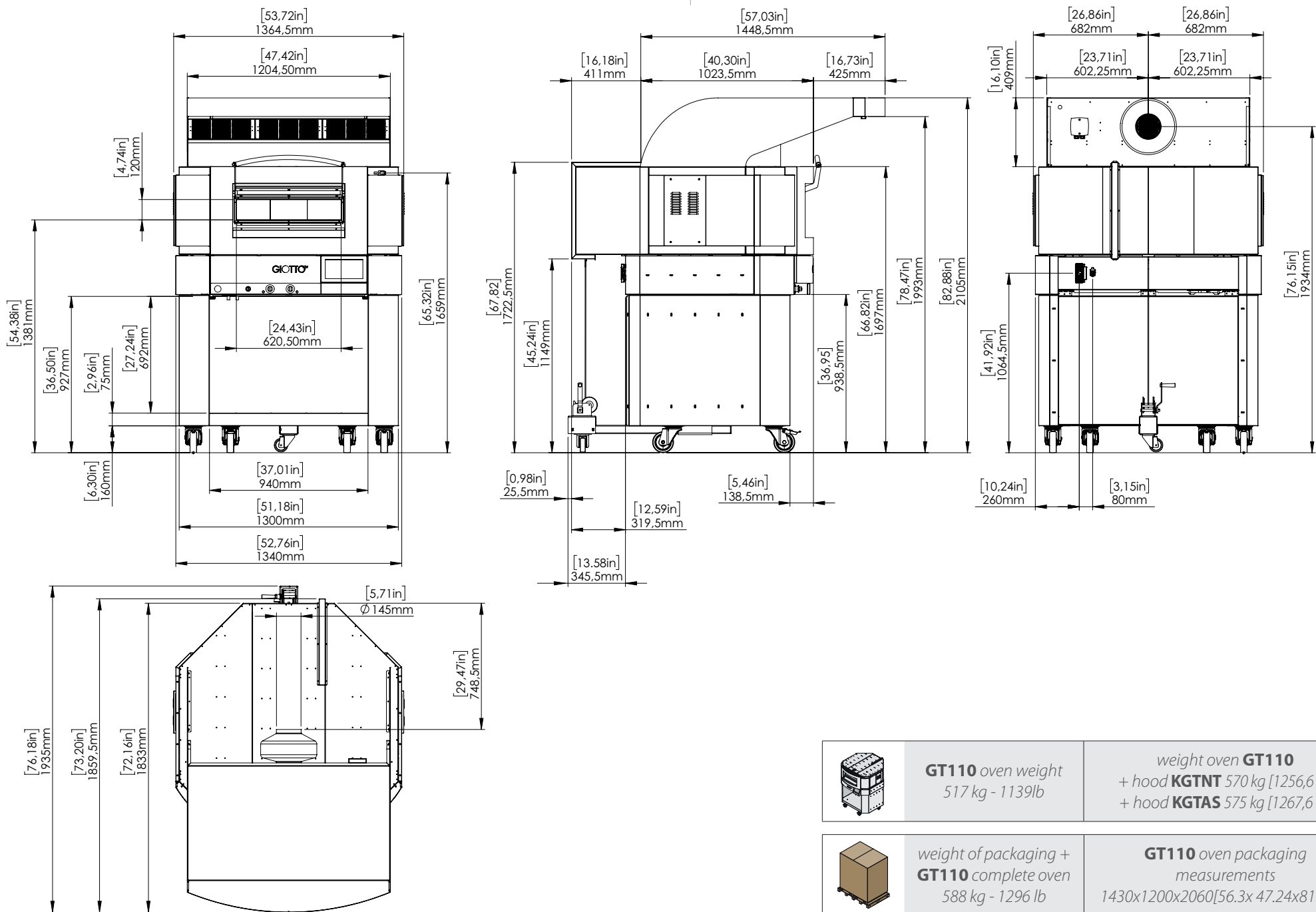


Giotto KGT hood technical data



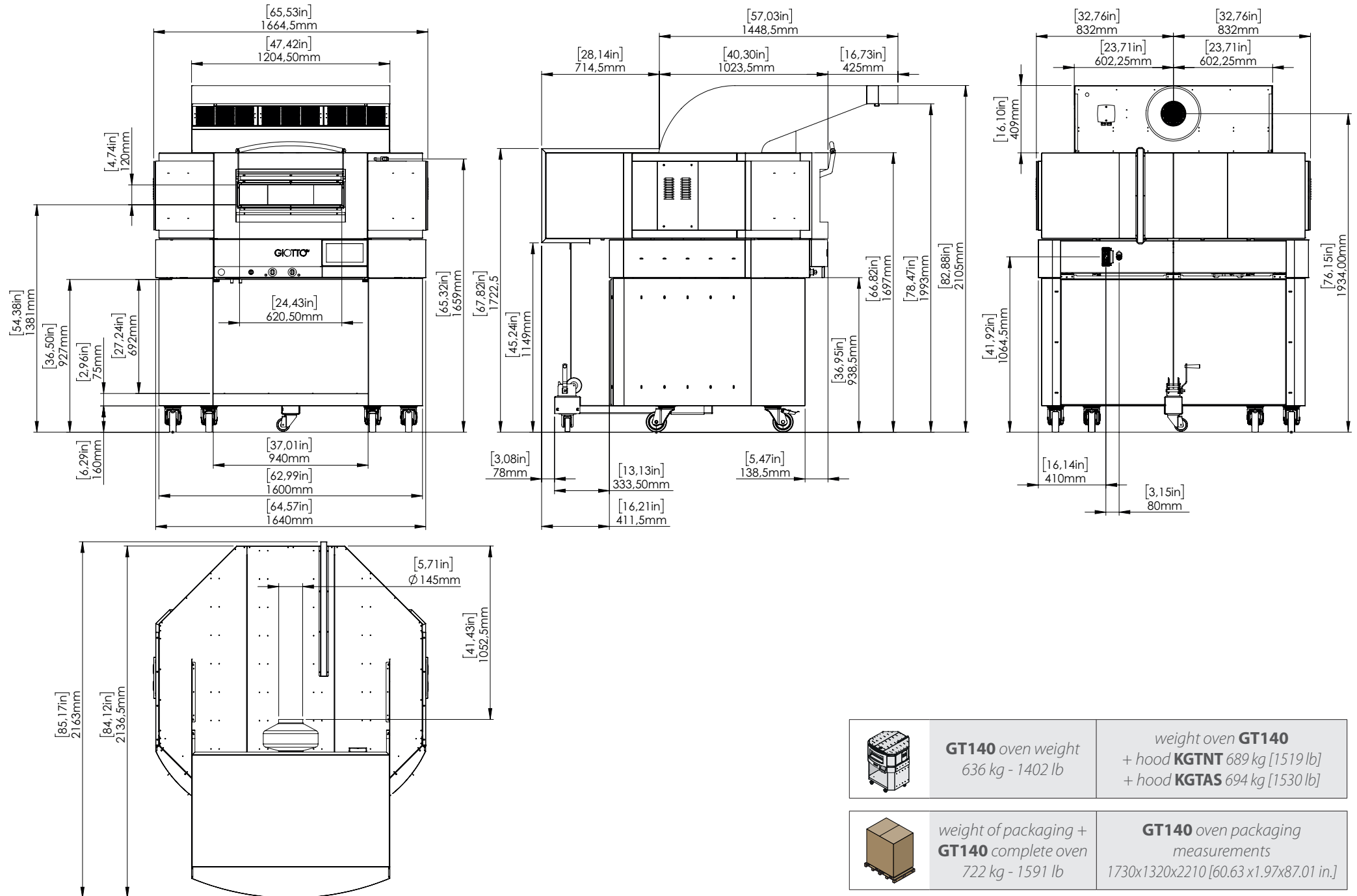
	hood weight 53 kg [116,8 lb] KGTNT / 58 kg [127,8 lb] KGTAS	
	weight packaging + GT hood) 76 kg - 167 lb	GT hood packaging measurements 1540x490x1386 [60.63x19.29x54.57 in.]

Giotto GT 110 oven technical data | with hood



	GT110 oven weight 517 kg - 1139lb	<i>weight oven GT110</i> + hood KGTNT 570 kg [1256,6 lb] + hood KGTAS 575 kg [1267,6 lb]
	<i>weight of packaging + GT110 complete oven</i> 588 kg - 1296 lb	GT110 oven packaging measurements 1430x1200x2060[56.3x 47.24x81.1 in.]

Giotto GT 140 oven technical data | with hood



	GT140 oven weight 636 kg - 1402 lb	weight oven GT140 + hood KGTNT 689 kg [1519 lb] + hood KGTAS 694 kg [1530 lb]
	weight of packaging + GT140 complete oven 722 kg - 1591 lb	GT140 oven packaging measurements 1730x1320x2210 [60.63x1.97x87.01 in.]

Safety instructions

- Read this guide carefully before installing the appliance, and keep it with care in an accessible place for any future consultation by the various operators.
- Moreover, the manual must always accompany the product through its life, even in case of transfer.
- Before any movement or installation, check that the room is suitable and systems comply with the installation country standards and the specifications indicated on the appliance rating plate.
- All installation, assembly and non-routine maintenance operations must be performed exclusively by qualified technicians that are authorised by the Dealer, in compliance with the regulations in force in the user country, and with the regulations on systems and work safety.
- Before performing any installation or maintenance, disconnect the electricity supply.
- Unauthorised actions, tampering or modifications that do not follow the information provided in this manual can cause damages, injuries or fatal accidents and null and void the warranty.
- It is forbidden to install the hood in environments at risk of explosion.
- Installation or maintenance that fails to comply with the instructions in this manual may cause damage, injury or fatal accidents.
- Persons not involved with the appliance installation may not pass through or stand in the work area during appliance assembly.
- The rating plate provides important technical information that is vital in case of a request for maintenance or repair of the appliance: please do not remove, damage or modify it.
- Failure to follow these regulations may cause damage or even fatal injury, subsequently invalidating the guarantee and relieving the Manufacturer of all liability.

Symbols used in the manual and on the labels applied to the machine



Indicates that caution is required when performing an operation described by a paragraph that contains this symbol. The symbol also indicates that maximum operator awareness is required in order to avoid unwanted or dangerous consequences



Reference to another chapter where the subject is dealt with in more detail.



Manufacturer's tip



Indicates that the surfaces marked with this symbol may be hot and must therefore be touched carefully



Dangerous voltage



The symbol identifies the terminals which, connected to each other, carry the various parts of a device or system to the same potential (not necessarily the earth potential)



Indicates that it is necessary to read carefully the paragraph marked with this symbol before installing, using and maintaining the equipment

The company cannot be held liable for any print or transcription errors, reserving the right to make changes where deemed suitable without prior notice.

Partial reproduction prohibited without the consent of the Manufacturer. The measurements provided are indicative and not binding.

The original language used to prepare this manual is English: the Manufacturer is not responsible for any translation/interpretation or print errors.

Transport

► Fig. 5

Fitted with personal protection equipment, transport the appliance to the installation location.

Use suitable equipment, capable of dealing with its weight: persons not involved with the appliance installation may not pass through or stand in the work area during the appliance assembly.

During the transport, pay particular attention to passing through openings and/or doors.

Preliminary operations

► Fig. 6

Carefully remove the protective film.

If any glue residue is left on the surfaces, remove it with soapy water but without any corrosive or abrasive products or sharp or pointed instruments.

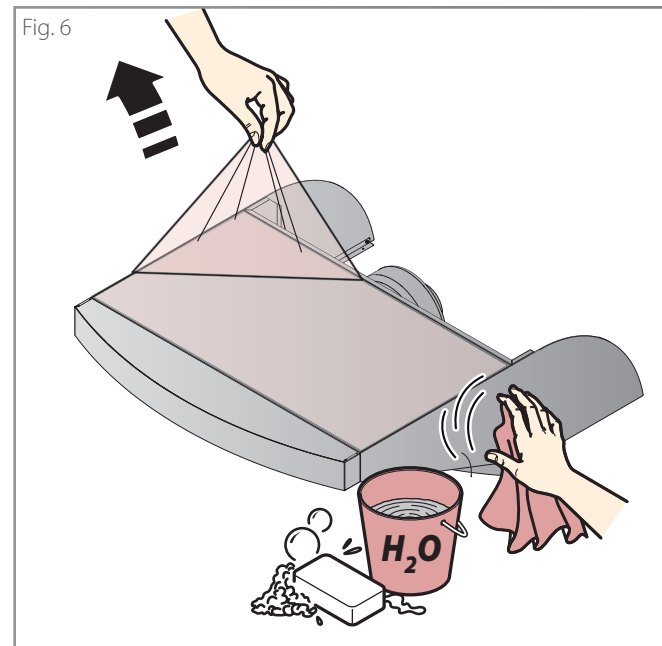


Check that all the parts making up the hood are in good condition and without any faults or breakages, if that is not the case, contact the Dealer for the procedures to follow.

Fig. 5



Fig. 6



Serial number plate reading

► Fig. 7

The serial number is on the back of the appliance.

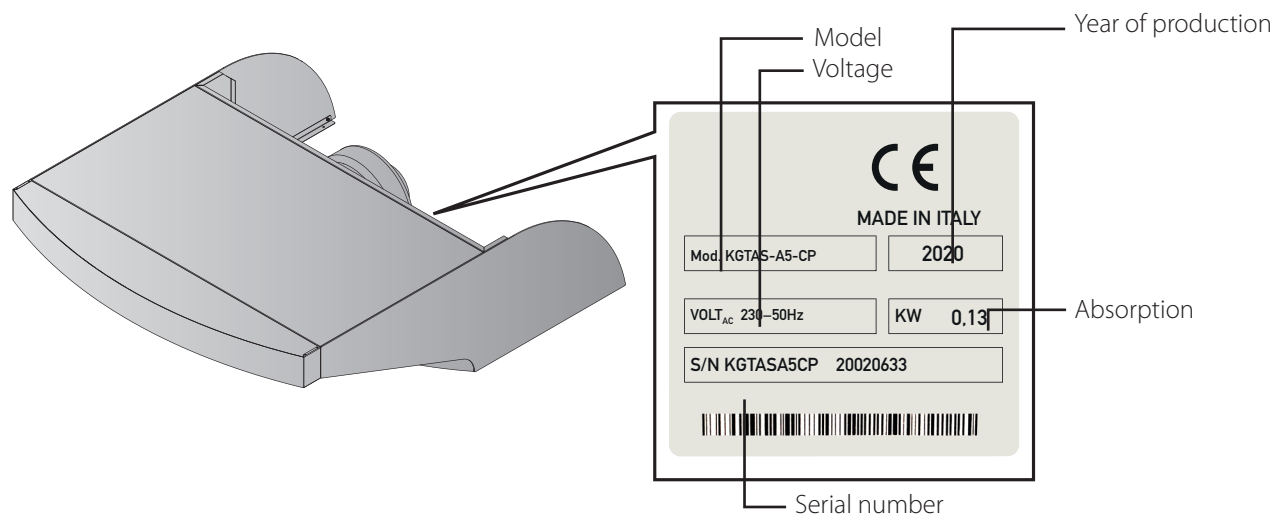
It provides important technical information that is vital in case of a request for maintenance or repair of the appliance: please do not remove, damage or modify it.




There are two hood variations:


- **neutral:** they only collect steam from the oven but do not have a suction motor. They are usually connected to a pre-existent exhaust system.
- **ventilation:** they suck and eliminate the steam from the oven by a 5-speed motor controlled by a front control touch panel.

Fig. 7



Positioning on the oven below

 The hoods can be positioned **only** on a Giotto oven.

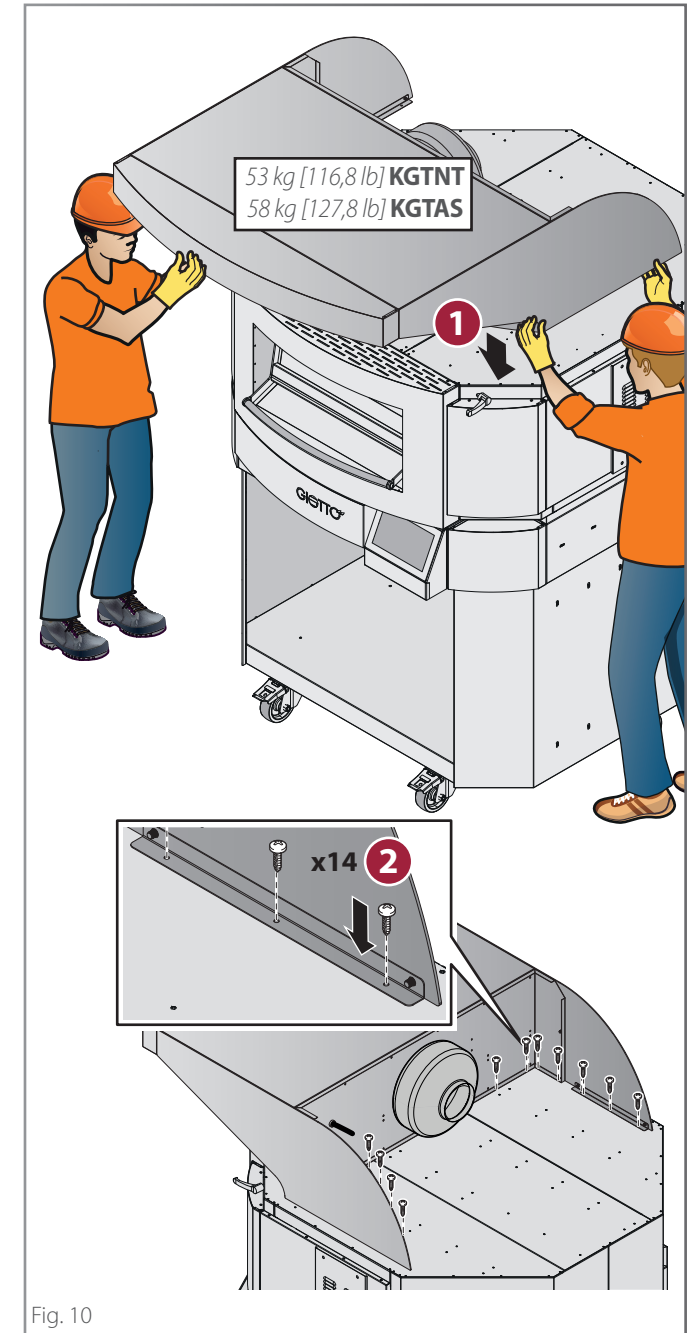
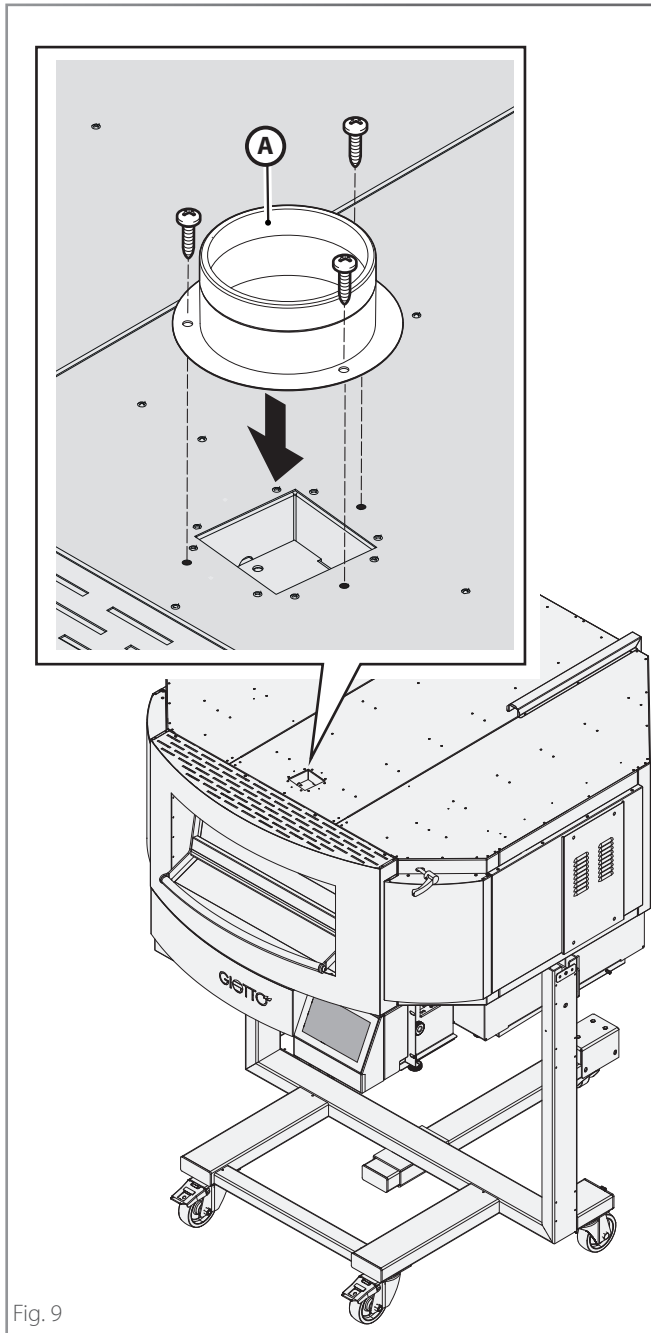
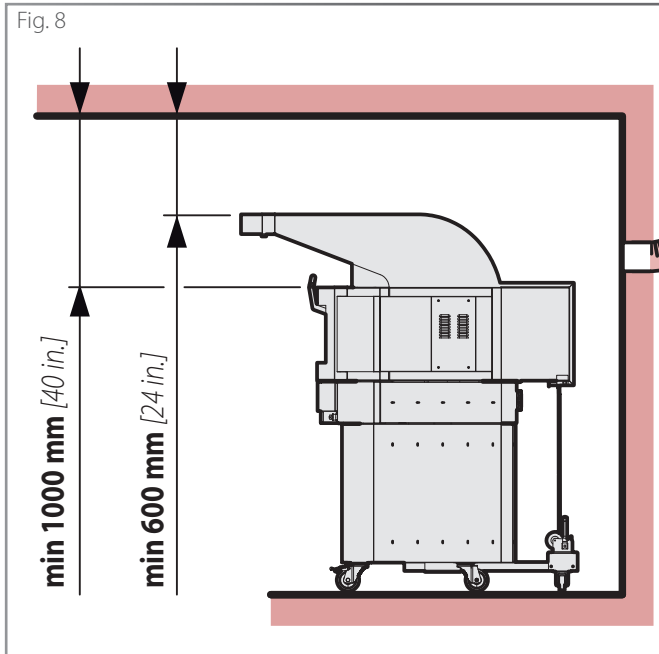
 Before connecting the hood, **check that:**

- **the systems the oven is connected to comply with the current regulations** in the country of use;

- ► **Fig. 8** between the hood and the ceiling there is a distance of about **600 mm [24 in.]** (shorter distances could damage ceilings made of particularly delicate and heat sensitive materials - e.g. wood)
- ► **Fig. 9** the collar "A" supplied is already installed on the oven.

► Fig. 10

Fix the hood to the oven below acting as shown in the figure.



Smoke extraction

The oven is equipped with an adjustable exhaust in the upper part to evacuate the steam coming from the cooking chamber. This steam, together with the one from the door during the work phases, **must be conveyed outside** through the hood:

There are two hood variants: the **ventilation** versions have a built-in 5-speed suction motor while the user's exhaust system can be installed in **neutral** versions.

► Fig. 11

Insert the tube **(B)** into the fume fitting **(A)** previously installed on the oven; the easiest assembly is from the front, through the filter housing compartment.

Then fix the collar **(C)** supplied by the Manufacturer, locking it with three screws.

It is then necessary to install a flue **(E)** blocking it with a metal clamp **(D)** (neither is supplied by the Manufacturer).

The flue **(E)** must:

- be exclusively used by the equipment,
- have a **Ø150 mm [Ø5.91 in.]** (to guarantee correct draught up to a maximum of 20 linear metres [787.4 in.] , three curves and a terminal on the roof),
- meet current regulations.

The recommended material is stainless steel resistant to high temperatures.



Provide a condensate drain (not supplied) to permit normal control and draining operations.

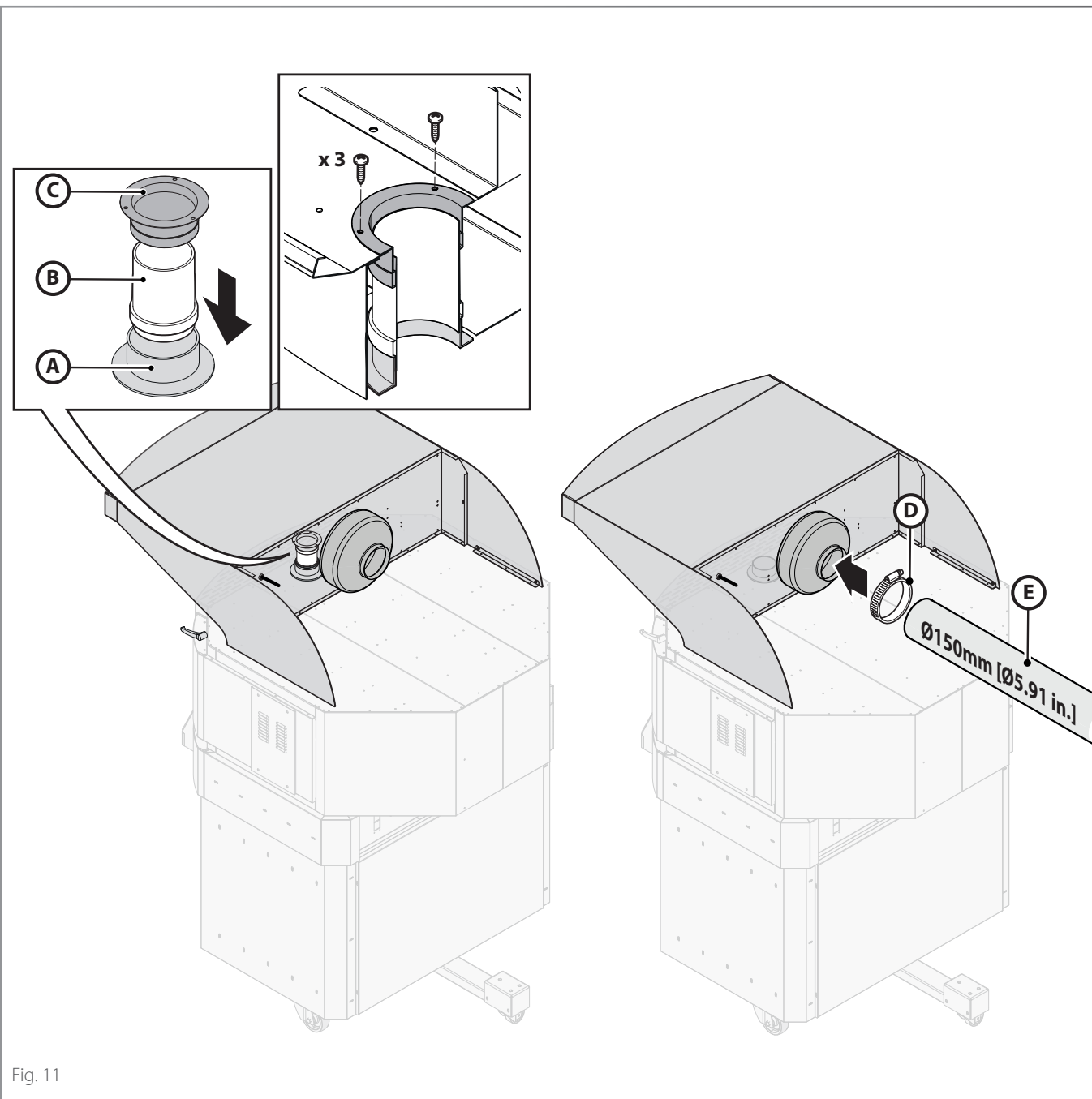


Fig. 11

Hood-oven electrical connection

► Fig. 12

To work, hoods do not need a wall socket; in fact they have a connector that must be inserted into a socket in the oven below.

This is the only approved connection; the Manufacturer accepts no liability for failure to comply with the above.



If required, the cable can be replaced by the Dealer or its technical service or by a person with similar qualifications to prevent any risk.

Installed cable section:

multipolar cable 5G1 (AWG18)

Installed cable type:

Cable CV05G100_03400_GR

Inserting the filters

► Fig. 13

Insert the filters as shown in the figure.

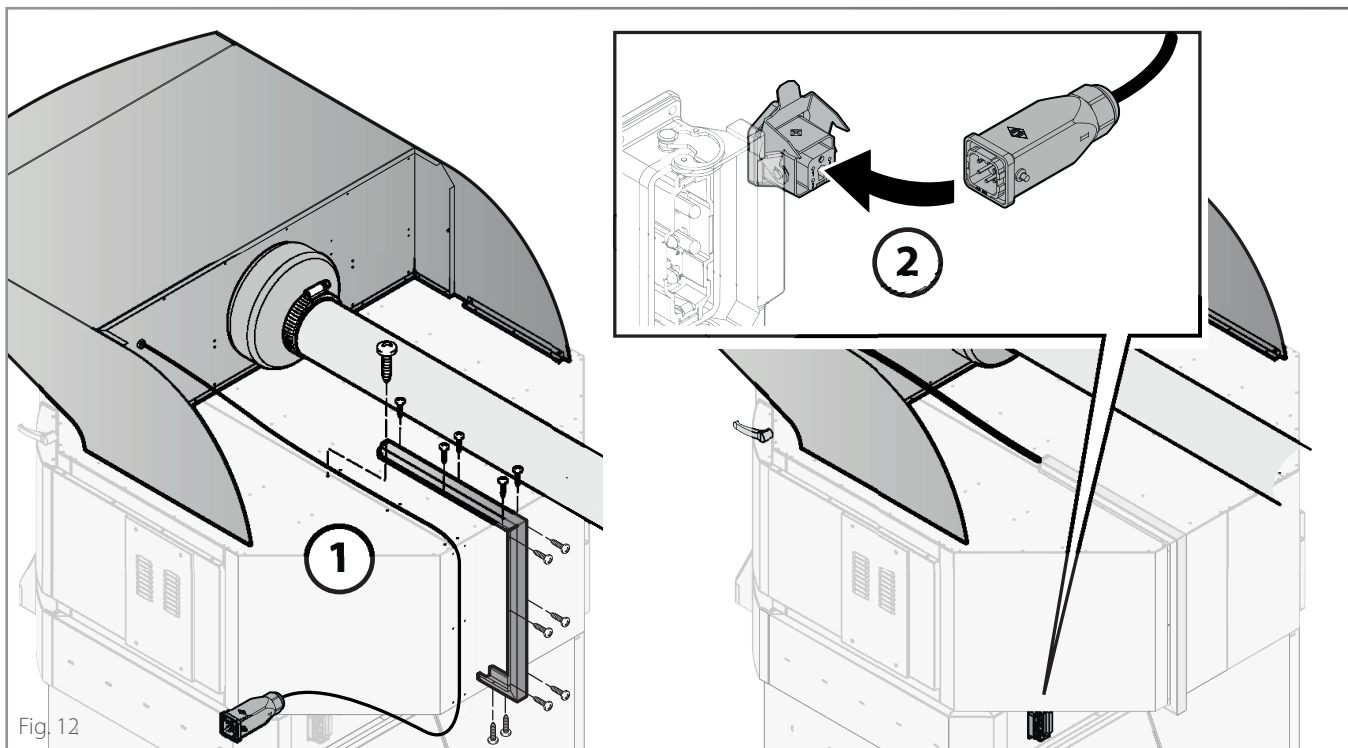


Fig. 12

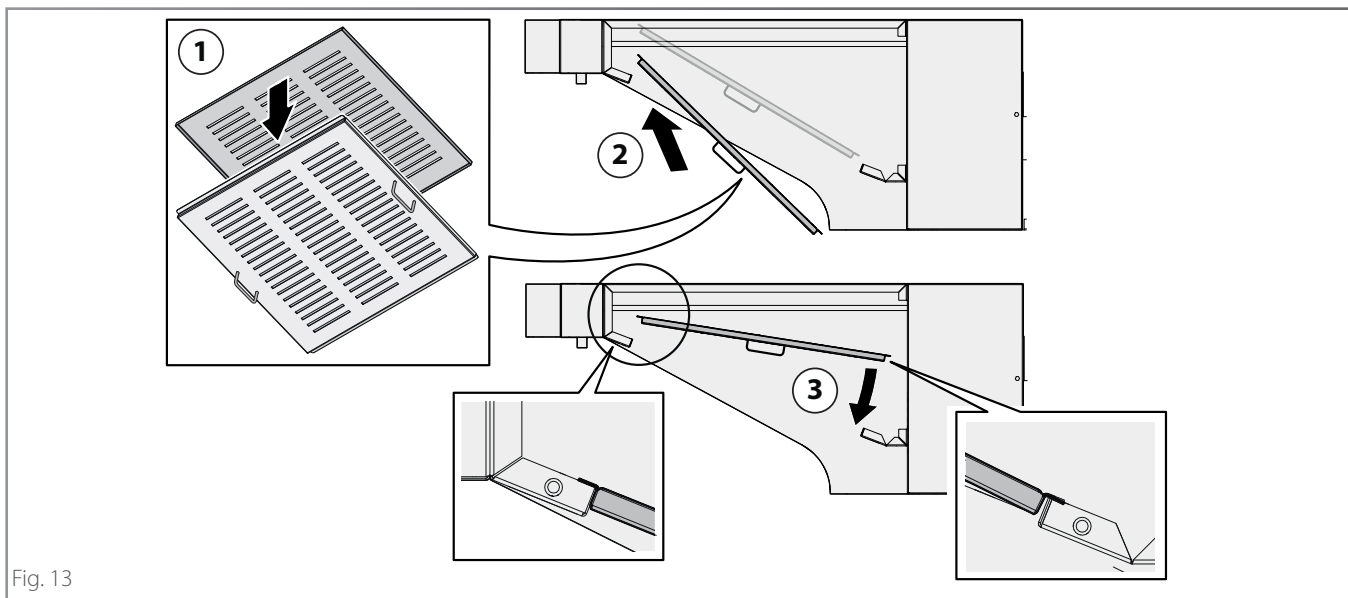
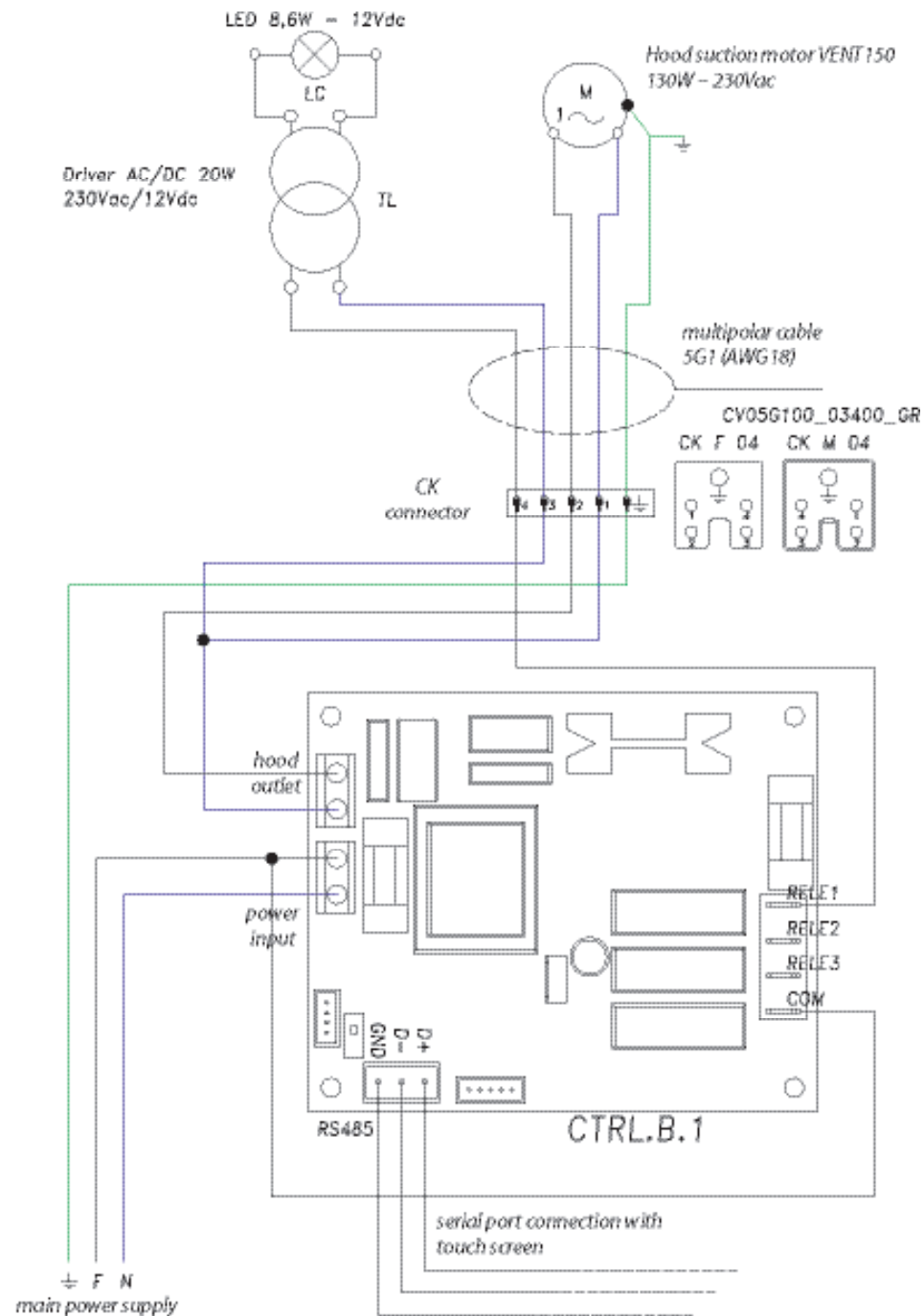


Fig. 13

Wiring diagram



Abbreviation	Description
CTRL.B.1	Hood extraction variator card
CK	Hood/oven connector
M	Hood extraction motor
LC	Hood lights
TL	Hood lights transformer
RS485	Serial connection input
RELE 1	Hood lights ON relay
RELE 2-3	Free relays
COM	Relay common phase terminal

Installed cable section:

multipolar cable 5G1 (AWG18)

Installed cable type:

Cable CV05G100_03400_GR

Pre-testing and final inspection

Before delivery to the customer, the hood is checked and tested in the Manufacturer's factories.

The "production process check sheet" enclosed with it guarantees that **each** step in the production process, from assembly to packaging, was carefully checked from both the operating and safety standpoints.

After installing the appliance, check and mark with a "√" all the boxes of the table on the side: this will confirm the installation is complete and correct.

Checking the operation

Start the appliance following the instructions in the "Use and Maintenance" manual: monitor it during the whole test and check that all the electrical components work properly.

Finish off explaining to the user how to use the appliance in an optimal and safe way and how to carry out ordinary maintenance and cleaning.

√	Positioning checks	Reference chapter on page...
	Has the protective film been removed from the surfaces?	Preliminary operations on page 10
	Is the equipment perfectly bound to the underlying oven?	Positioning on the oven below on page 11
	Is the current chimney flue adequate and does it complies with the current regulations?	Smoke extraction on page 12
√	Electrical checks (ventilated hoods only)	Reference chapter
	Does the mains voltage match the data on the rating plate?	Hood-oven electrical connection on page 13
√	Miscellaneous	Reference chapter
	Does the user have all the documentation relative to the hood?	-
	Has the user been correctly trained on the use and maintenance of the hood?	-

The company cannot be held liable for any print or transcription errors, reserving the right to make changes where deemed suitable without prior notice.

Partial reproduction prohibited without the consent of the Manufacturer. The measurements provided are indicative and not binding.

The original language used to prepare this manual is Italian: the Manufacturer is not responsible for any translation/interpretation or print errors.

CUPPONE 1963

Cuppone F.lli S.r.l.

Via Sile, 36

31057 Silea (TV) - ITALY

T +39 0422 361143

F +39 0422 360993

info@cuppone.com - www.cuppone.com

