

# Tiziano

## HOOD

Pre-installation and installation,  
use and maintenance manual

KTZ 420  
KTZ 425  
KTZ 230  
KTZ 430  
KTZ 435



This hood has been designed and constructed with the utmost care and undergone rigorous tests in our laboratories and for this reason we guarantee its absolute safety and functionality. Before delivery to the customer, the hood is checked and tested in the Manufacturer's factories.

The "production process check sheet" enclosed with it guarantees that **each** step in the production process, from assembly to packaging, was carefully checked from both the operating and safety standpoints.

This booklet is dedicated to the pre-installation, installation and use of the Tiziano hood.

The installation must be carried out by **professionally qualified** staff, that can take responsibility for the installation and guarantee the best safe operating conditions.

Before installation, use and maintenance, **carefully** read the contents of this manual: it contains important information regarding the assembly, use and cleaning of the product and the safety rules.

## Technical service

The Dealer can solve any technical problem regarding installation.

Do not hesitate to contact him in case of doubt.

CUPPONE 1963

Cuppone F.lli S.r.l.

Via Sile, 36

31057 Silea (TV) - ITALY

T +39 0422 361143

F +39 0422 360993

info@cuppone.com - www.cuppone.com

<b>1</b>	CHECKS BEFORE PURCHASING.....	3
----------	-------------------------------	---

<b>2</b>	HOOD TECHNICAL DATA.....	5
----------	--------------------------	---

Tiziano KTZ 420 hood technical data .....	6
Tiziano KTZ 425 hood technical data .....	11
KTZ 230 Tiziano hood technical data .....	16
Tiziano KTZ 430 hood technical data .....	21
Tiziano KTZ 435 hood technical data .....	26

<b>3</b>	INSTALLATION (part reserved for the installer) .....	31
----------	--	----

<b>Safety instructions .....</b>	<b>31</b>
Symbols used in the manual.....	31

<b>Installation .....</b>	<b>32</b>
---------------------------	-----------

Transport .....	32
Preliminary operations.....	32
Serial number plate reading .....	32
Positioning and connection to the oven below.....	33
Smoke extraction .....	33
Inserting the hood filters.....	34
Pre-testing and final inspection.....	35

<b>4</b>	USE (part reserved for the user).....	36
----------	---------------------------------------	----

<b>Safety instructions .....</b>	<b>36</b>
----------------------------------	-----------

<b>Basic notions .....</b>	<b>37</b>
----------------------------	-----------

Knowing the hood .....	37
------------------------	----

Preparing to use the hood .....	37
---------------------------------	----

<b>Using the hood .....</b>	<b>38</b>
-----------------------------	-----------

<b>Cleaning the hood .....</b>	<b>38</b>
--------------------------------	-----------

Warnings.....	38
---------------	----

Cleaning the external steel parts .....	38
---	----

Hood downtime for prolonged periods.....	38
--	----

<b>Replacements .....</b>	<b>39</b>
---------------------------	-----------

Replacing the filters.....	39
----------------------------	----

Disposal at end of life .....	40
-------------------------------	----

<b>Warranty.....</b>	<b>41</b>
----------------------	-----------

<b>Something is not working.....</b>	<b>42</b>
--------------------------------------	-----------

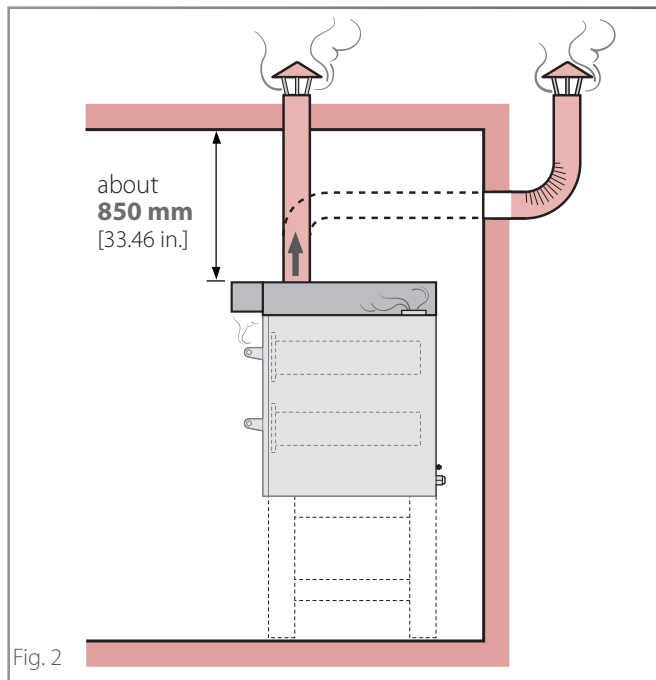
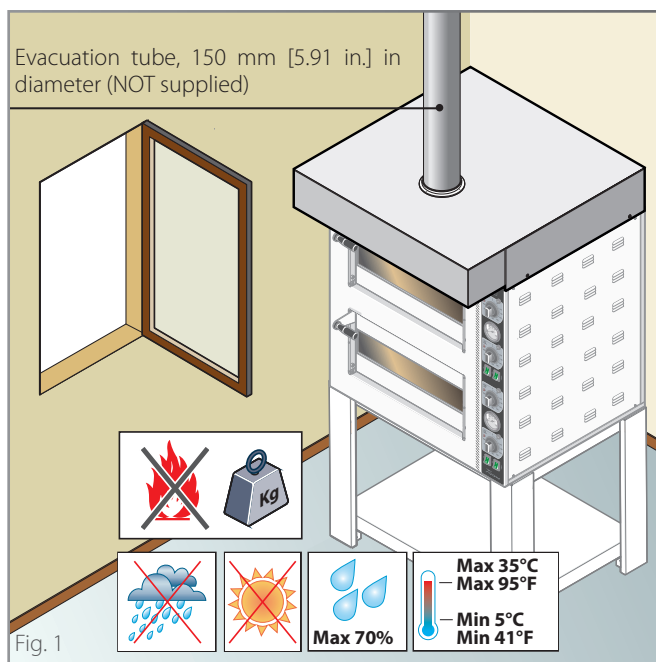
What to do in case of any malfunction .....	42
---	----

The company cannot be held liable for any print or transcription errors, reserving the right to make changes where deemed suitable without prior notice. Partial reproduction without the Manufacturer's consent is prohibited. Measurements are purely indicative and not binding. The original language used to prepare this manual is English: the Manufacturer is not responsible for any translation/interpretation or print errors.

# 1 CHECKS BEFORE PURCHASING

After purchasing the hood and installing it, check the following conditions, necessary for the correct installation, operation and maintenance of the hood.

A	Transport (Owner's inspection)
✓	Make sure that, on the day when you receive the hood or it is installed:
	<ul style="list-style-type: none"> <li>lifting equipment is available that can handle the appliance safely (check weight and dimensions in the following pages), together with staff qualified to carry out this operation;</li> </ul>
	<ul style="list-style-type: none"> <li>personal protection equipment is available (e.g. safety shoes, gloves, etc.)</li> </ul>
B	Installation room (Owner's inspection)
✓	Make sure that:
	<ul style="list-style-type: none"> <li>the floor of the installation room is fireproof, perfectly flat and capable of withstanding the weight of the hood and underlying oven.</li> </ul>
	<ul style="list-style-type: none"> <li>the installation room: <ul style="list-style-type: none"> <li>is dedicated and suitable to cooking food;</li> <li>has adequate air ventilation;</li> <li>complies with the current regulations on health and safety and systems in the workplace;</li> <li>is protected from the weather;</li> </ul> </li> </ul>
	<ul style="list-style-type: none"> <li>there is a distance of about <b>850 mm</b> [33.46 in.] from the ceiling (shorter distances could damage ceilings made of particularly delicate and heat sensitive materials - e.g. wood);</li> </ul>
	<ul style="list-style-type: none"> <li>there is adequate ventilation according to the regulations in force in the Country of installation. If this is not the case, a Ø14 cm air intake is mandatory [Ø5.41 in.] communicating with the outside or a ventilated room (i.e. storeroom, attic, garage, basement).</li> </ul>
⚠	<p>When choosing the positioning room, take into account that the appliance must be easy <b>to move</b> for any extraordinary maintenance: be careful that any brickwork after installation (e.g.: wall construction, replacement of a door with a narrower one, renovations, etc.) do not hamper movements.</p>



# Checks before purchasing

## D Smoke evacuation (Owner's inspection)

The oven is fitted with a flue in the top to get rid of the steam from the cooking chamber.

This steam, together with the one from the door during the work phases, **can be conveyed outside** through the hood.

### ► Fig. 3

The hood must be connected to a flue for the exclusive use of the appliance that complies with current regulations and that has a diameter that allows the passage of an exhaust pipe "A" measuring Ø150mm [Ø5,91in] which corresponds to the diameter of the pipe to be mounted on the hood by means of a clamp "B" (the pipe and the clamp are not supplied by the Manufacturer). We recommend that the evacuation pipe "A" is in stainless steel resistant to high temperatures and complies with the regulations in force.

### ► Fig. 4

The hood is not equipped with a suction motor, however it is possible to connect it to a **suitable suction system** of the user: connect a Ø150mm [Ø5,91in] exhaust pipe "D" to the hood with a clamp "E" and interpose mandatorily a fume damper "F" between the extractor and the hood (the extractor, the connection pipe and the damper are not supplied by the Manufacturer).

We recommend that the evacuation pipe "D" is in stainless steel resistant to high temperatures and complies with the regulations in force.



*Provide a condensate drain (not supplied) to permit normal control and draining operations.*

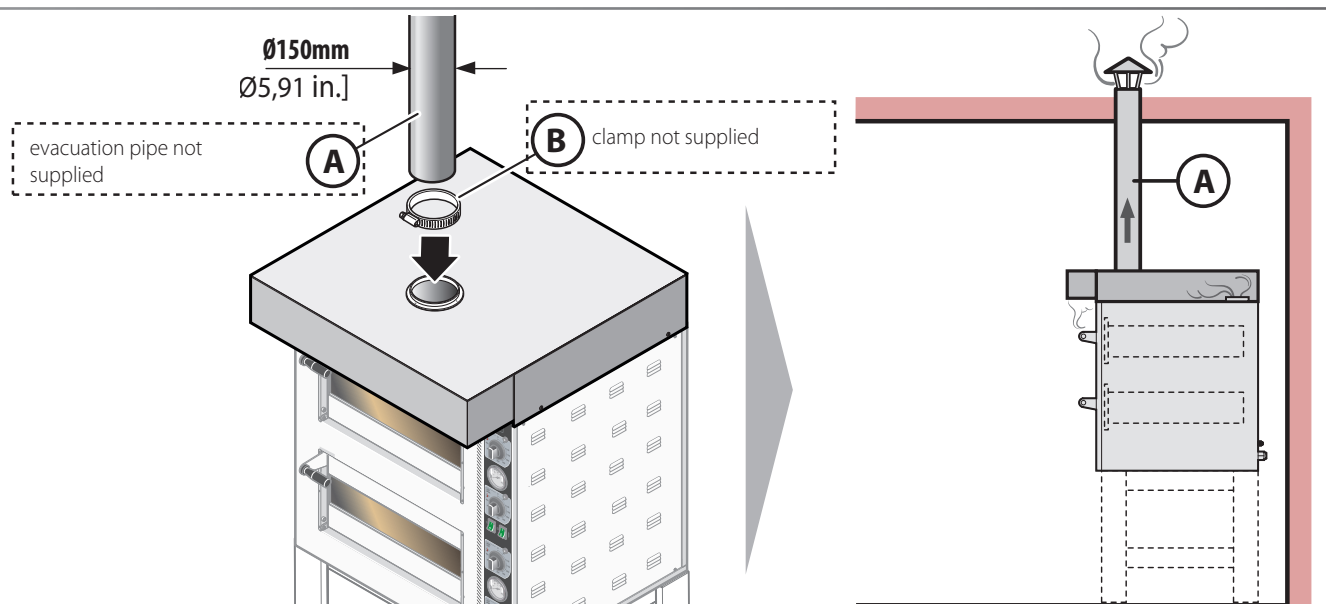


Fig. 3

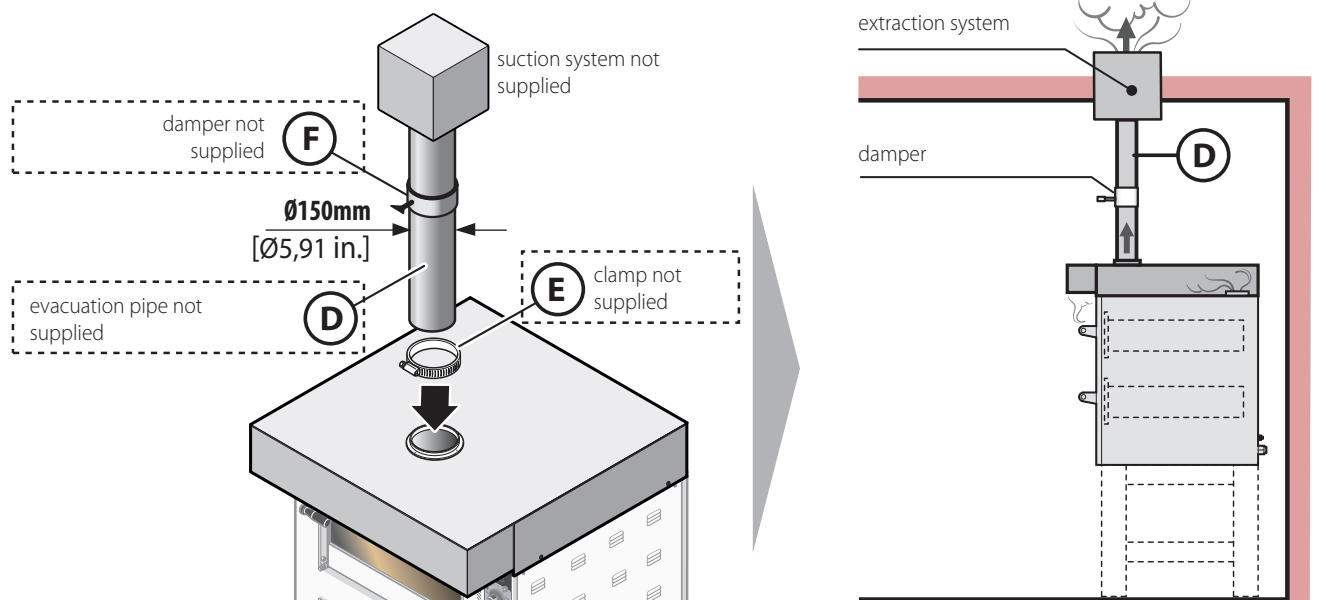
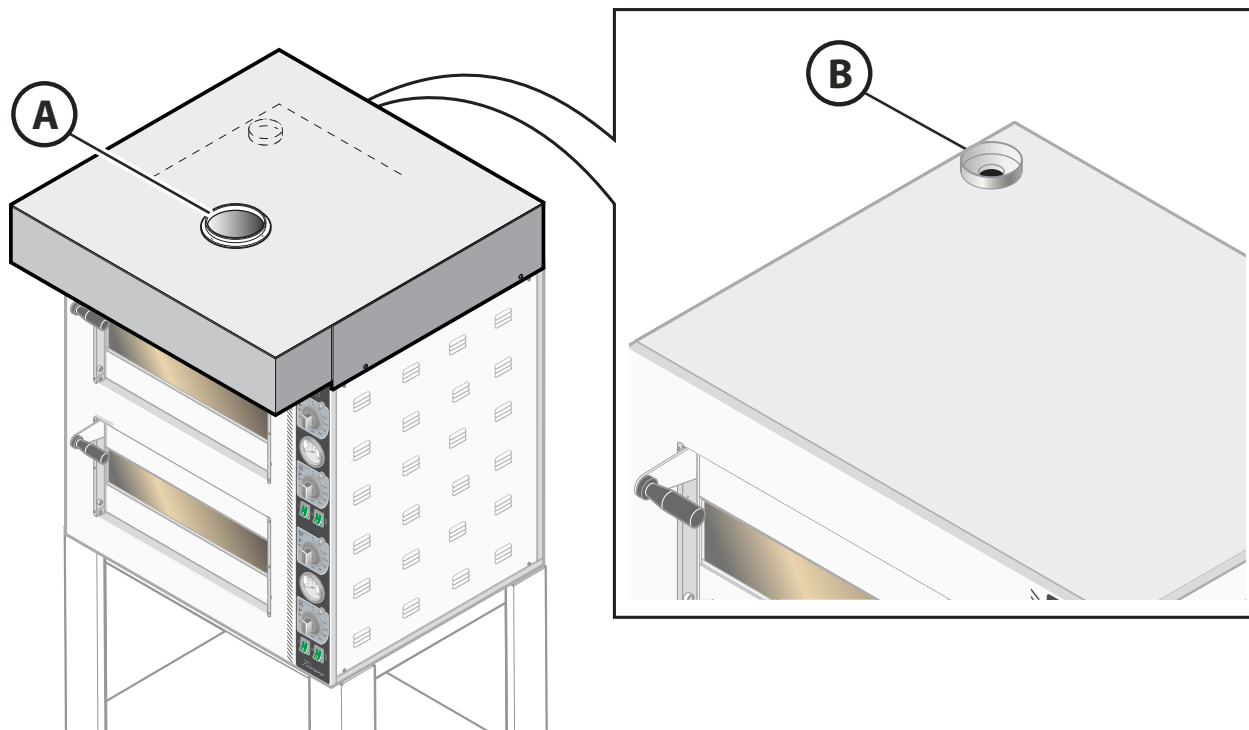


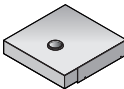
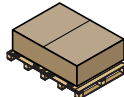
Fig. 4

## 2 Tiziano hood technical data

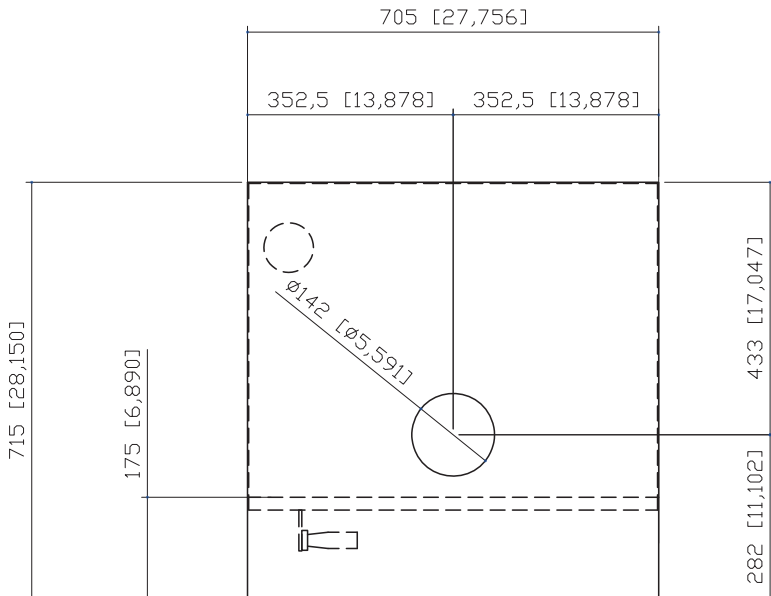
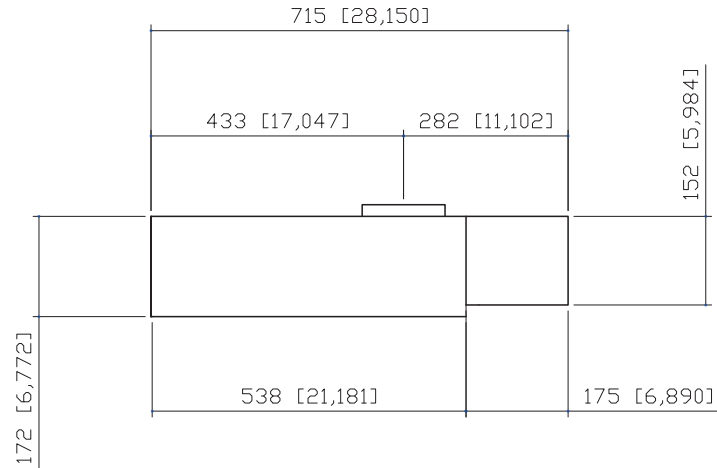
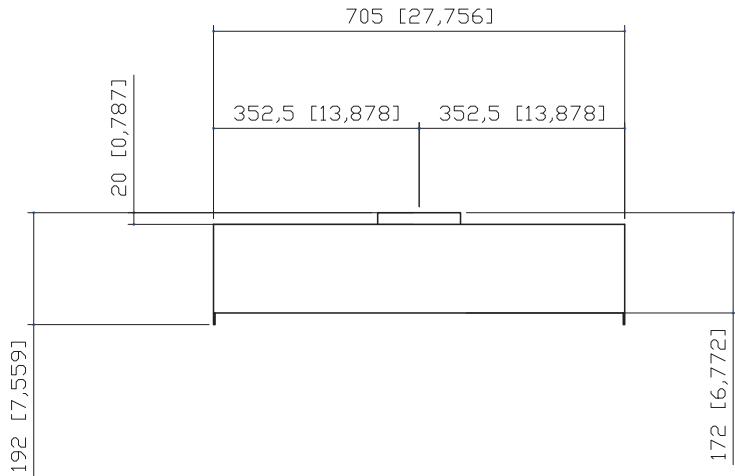
### Key

- (A) Hood fume exhaust
- (B) Oven smoke exhaust

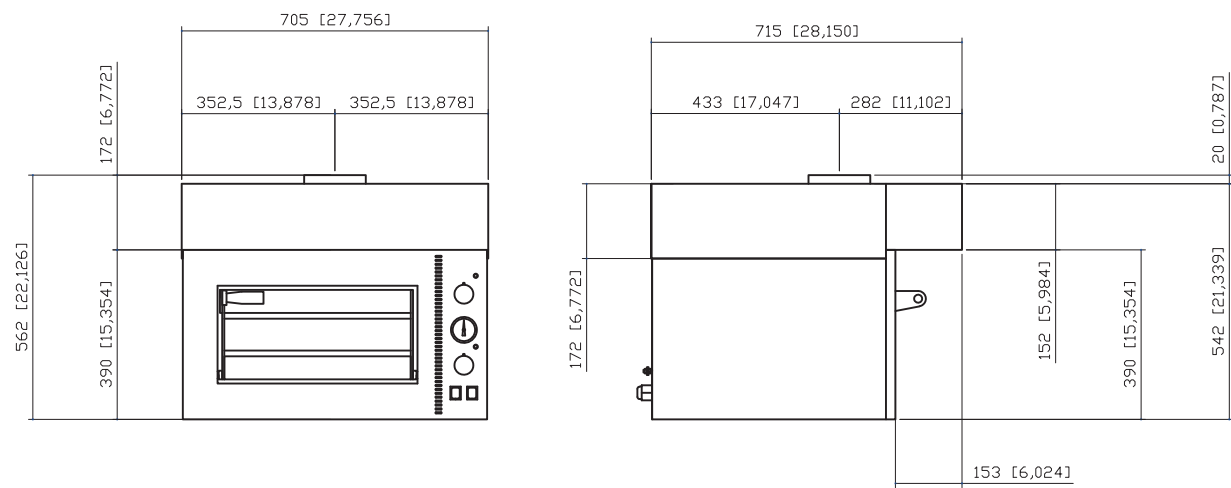


Model		
KTZ 420 NT	hood weight <b>11 kg</b> [24,2 lb]	hood packaging measurements <b>860x1150x190</b> [33,86x45,28x7,48 in.] <b>13 kg</b> [28,6 lb]
KTZ 425 NT	hood weight <b>13 kg</b> [28,6 lb]	hood packaging measurements <b>860x1150x190</b> [33,86x45,28x7,48 in.] <b>15 kg</b> [33 lb]
KTZ 230 NT	hood weight <b>14 kg</b> [30,8 lb]	hood packaging measurements <b>860x1150x190</b> [33,86x45,28x7,48 in.] <b>17 kg</b> [37,4 lb]
KTZ 430 NT	hood weight <b>15 kg</b> [33 lb]	hood packaging measurements <b>1150x1220x190</b> [45,28x48,03x7,48 in.] <b>18 kg</b> [39,6 lb]
KTZ 435 NT	hood weight <b>17 kg</b> [37,4 lb]	hood packaging measurements <b>1150x1220x190</b> [45,28x48,03x7,48 in.] <b>21 kg</b> [46,2 lb]

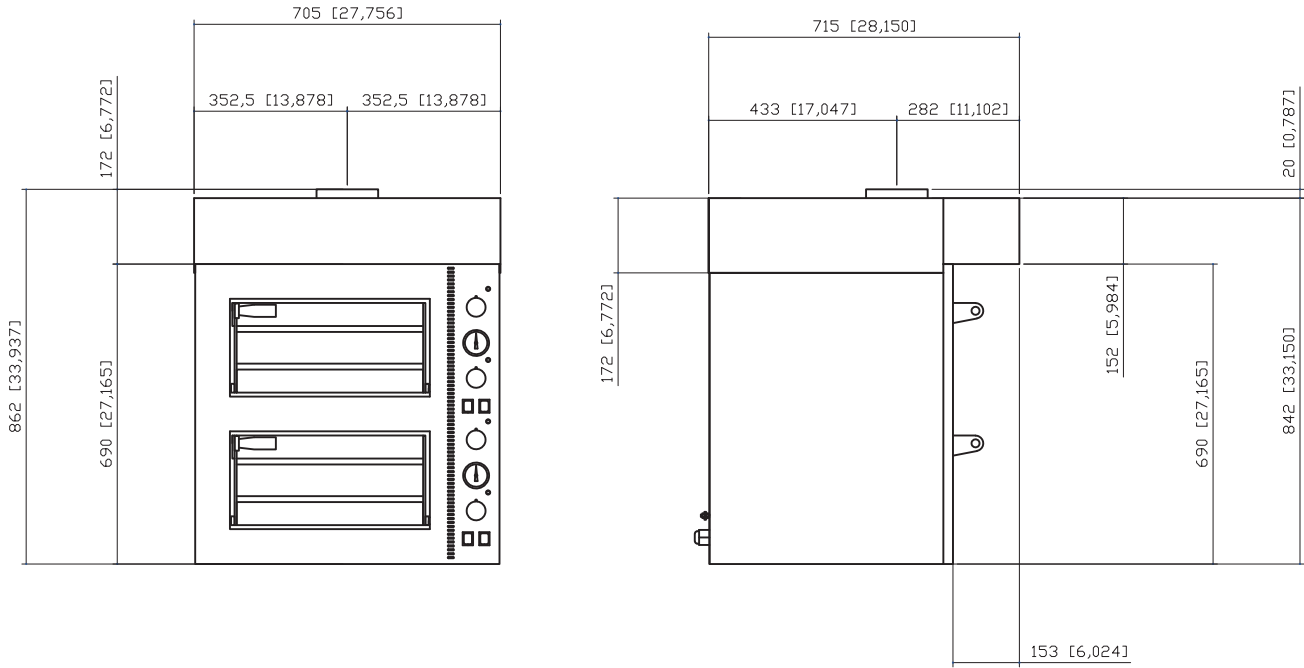
## Tiziano KTZ 420 hood technical data | hood



Tiziano KTZ 420 hood technical data | hood + single oven

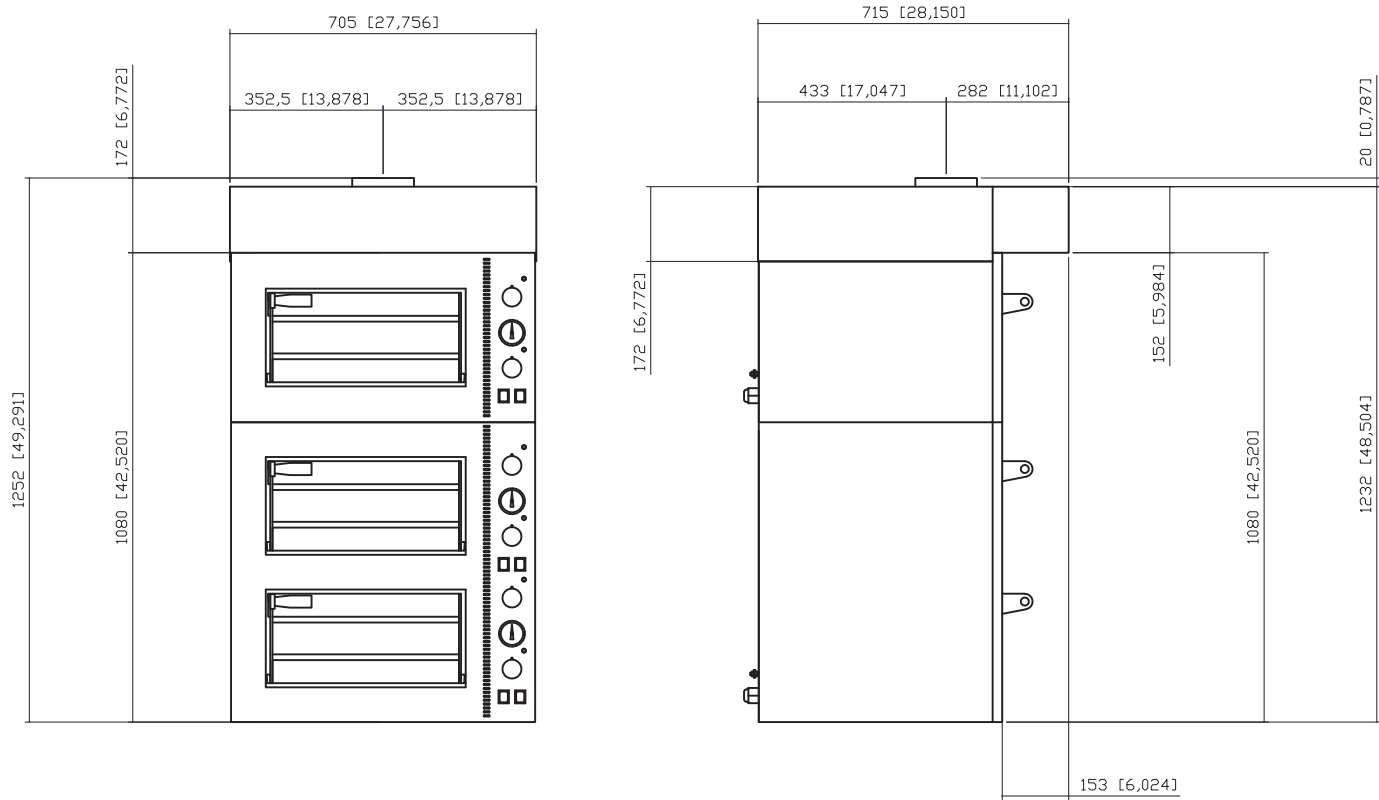


Tiziano KTZ 420 hood technical data | hood + double oven

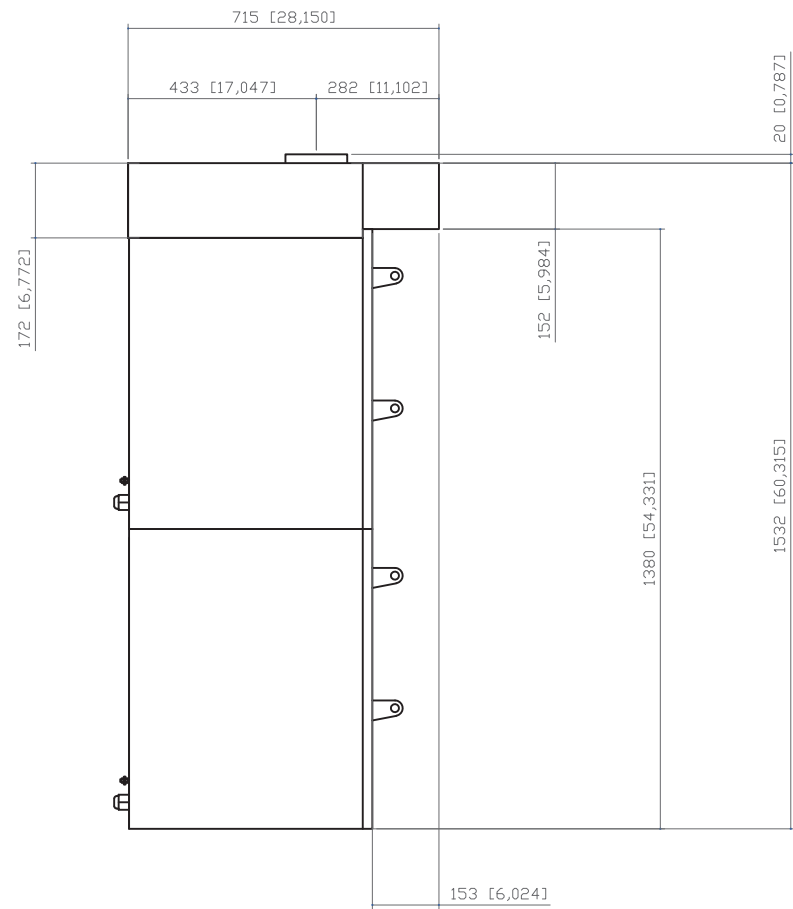
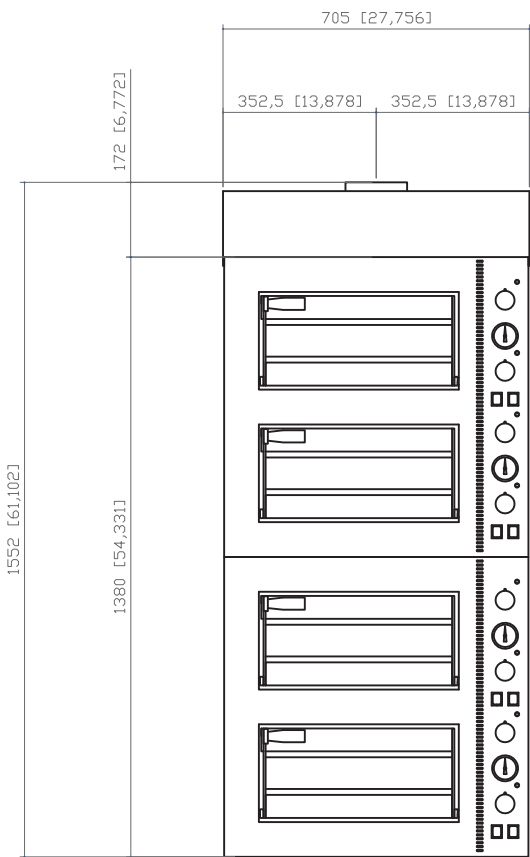


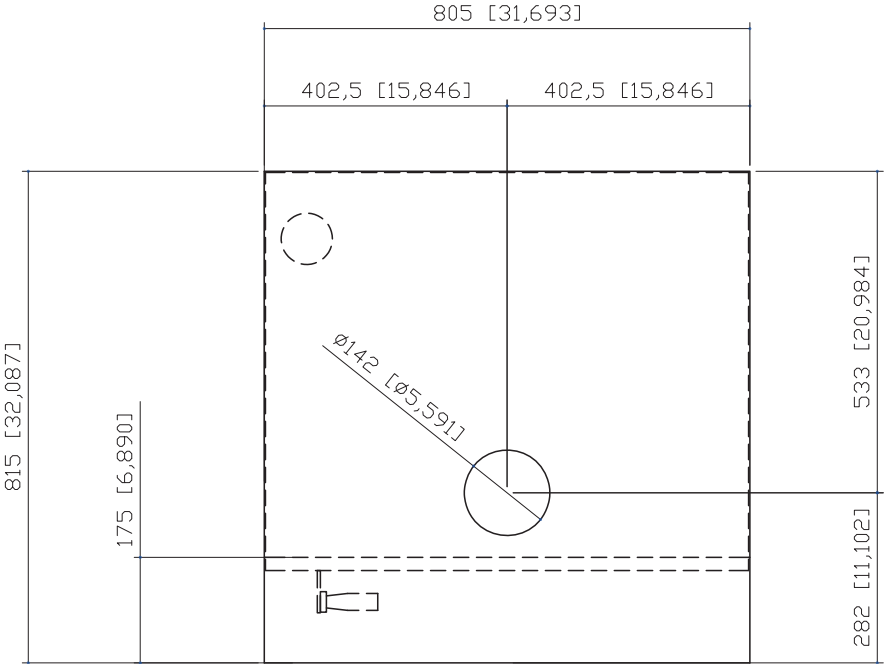
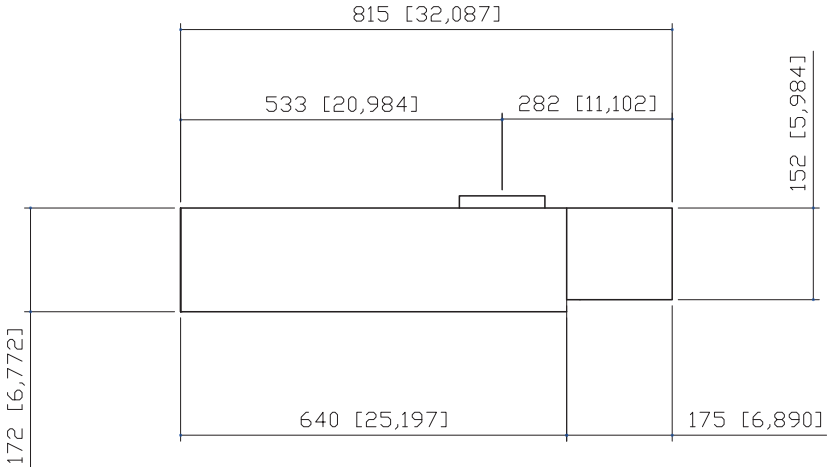
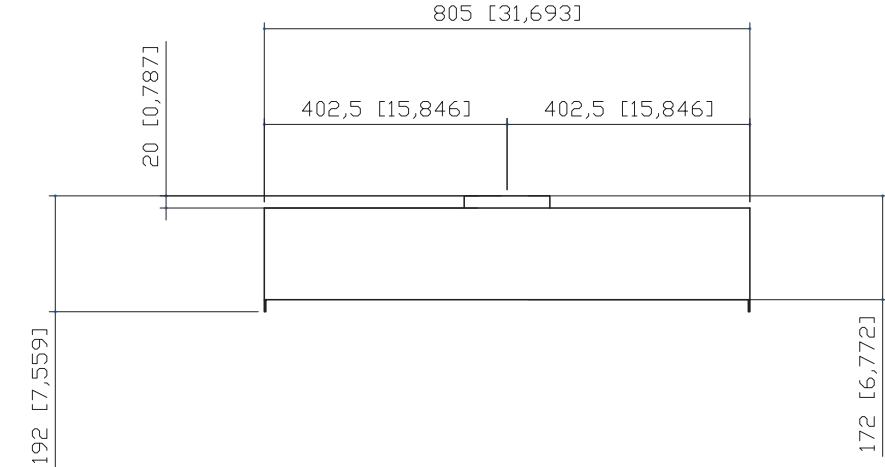


Tiziano KTZ 420 hood technical data | hood + triple oven

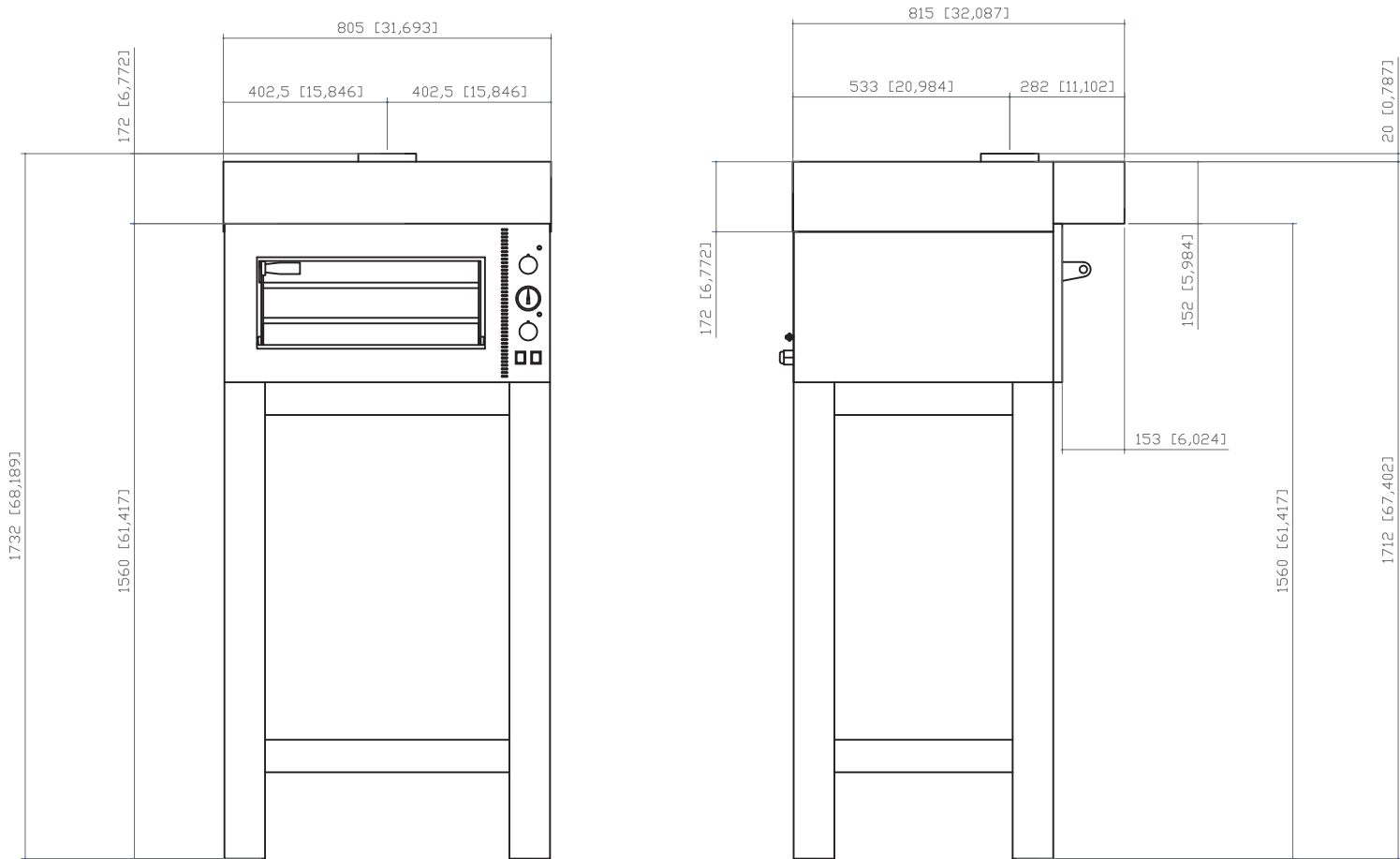


Tiziano KTZ 420 hood technical data | hood + quadruple oven

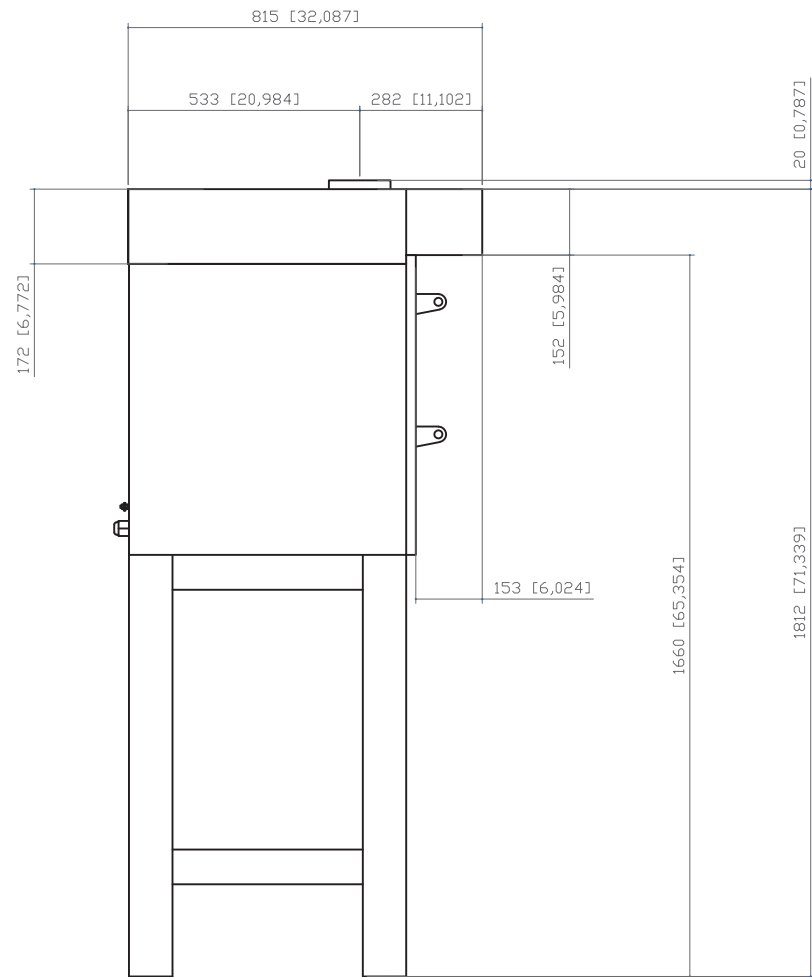
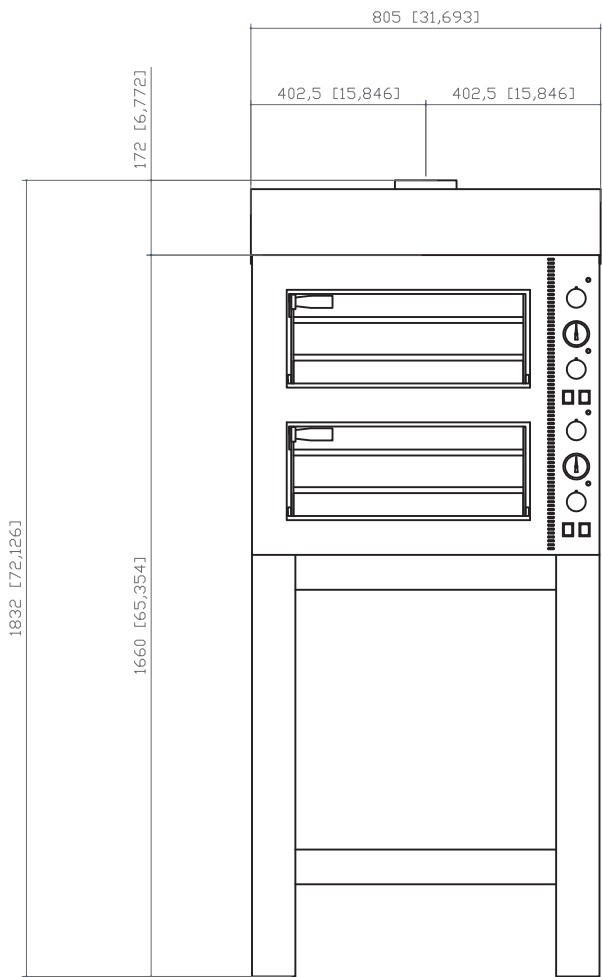




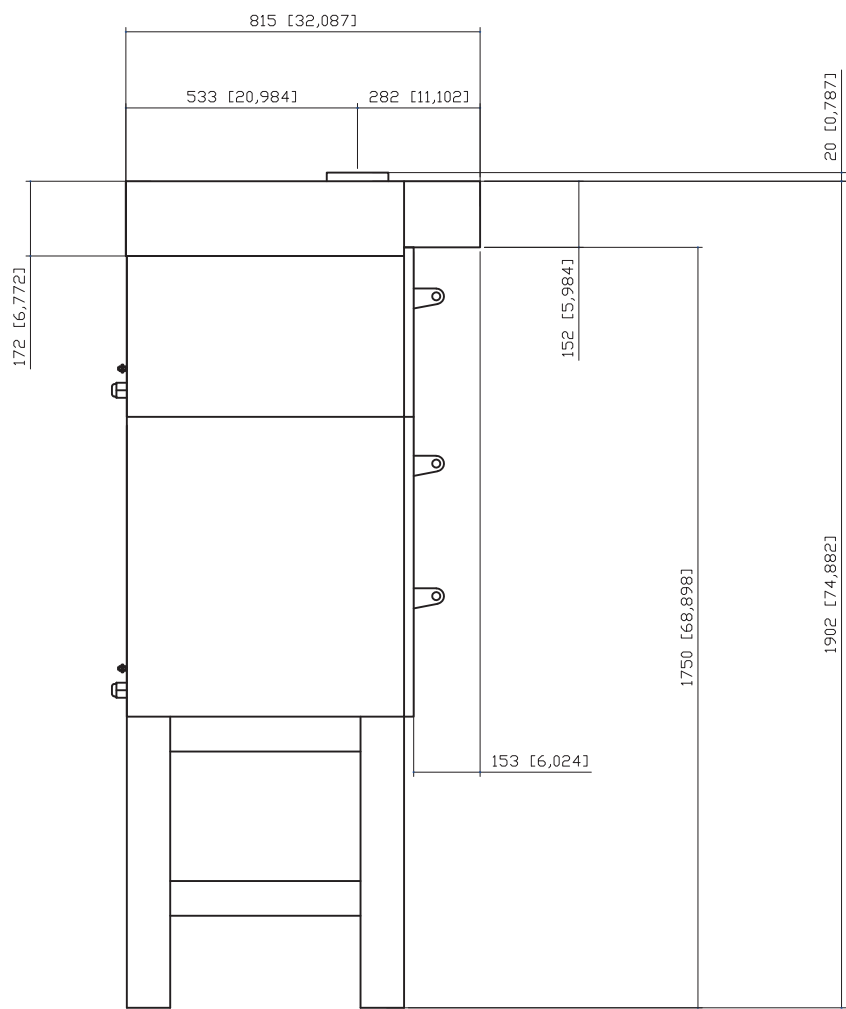
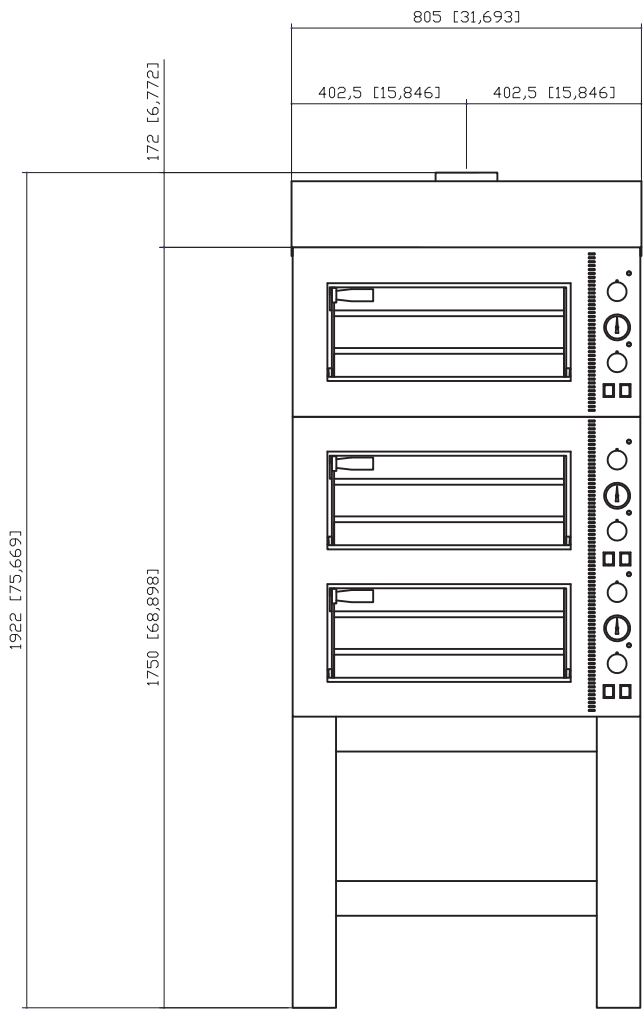
Tiziano KTZ 425 hood technical data | hood + single oven



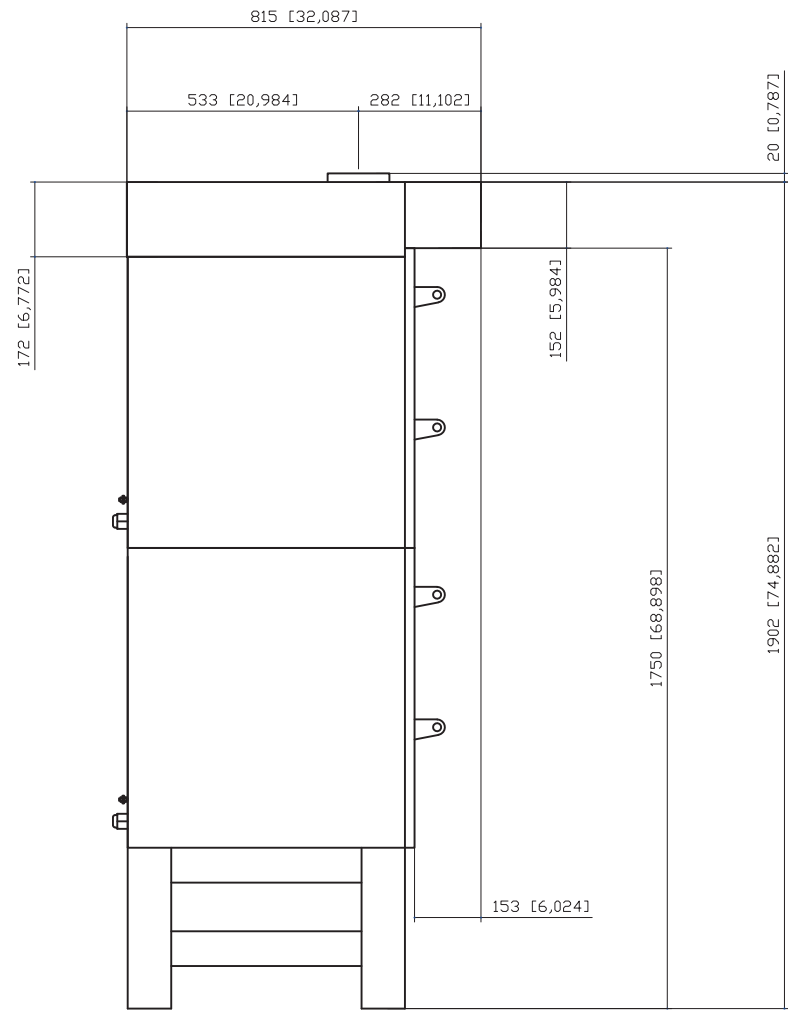
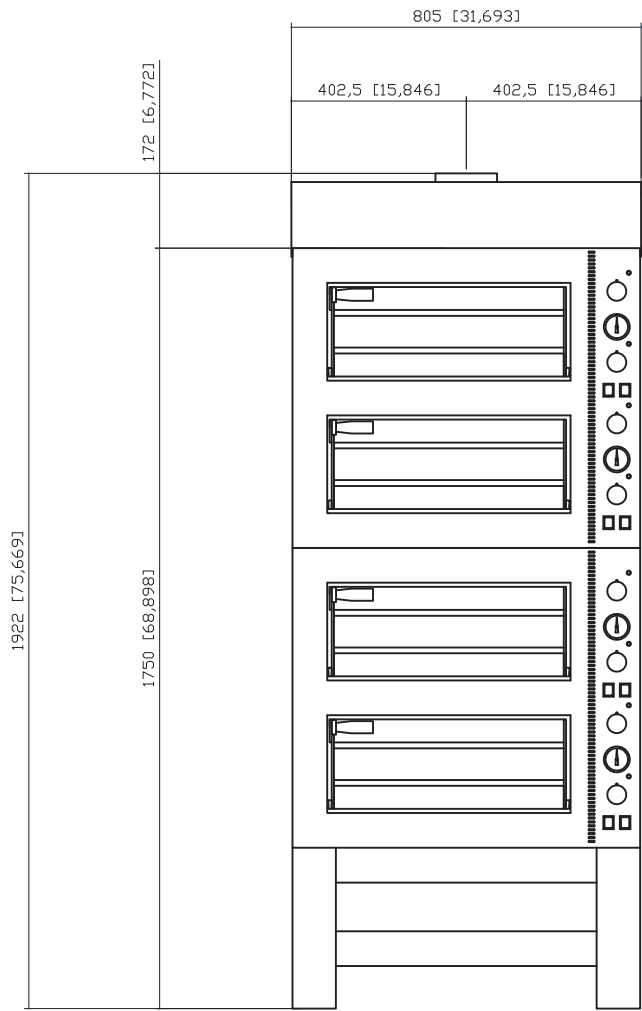
Tiziano KTZ 425 hood technical data | hood + double oven

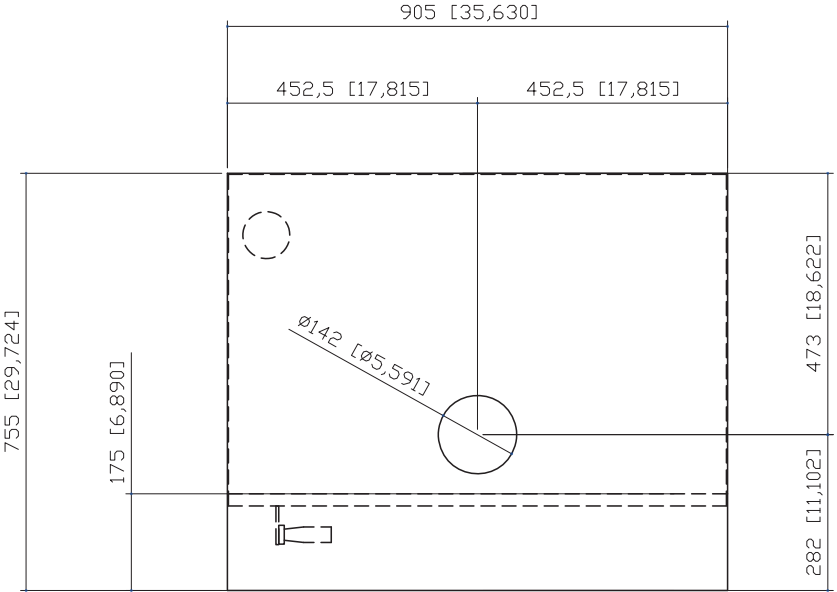
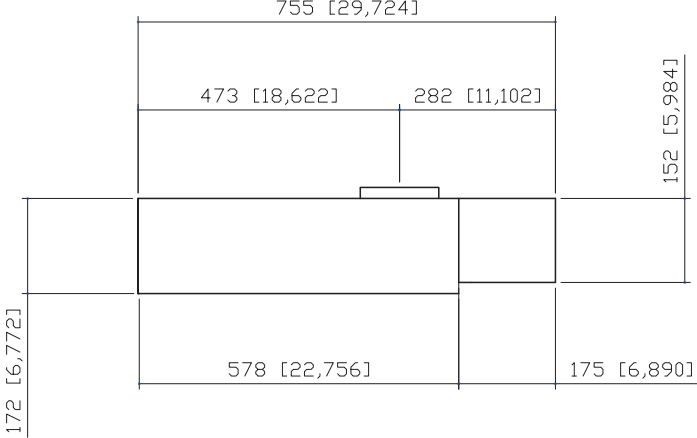
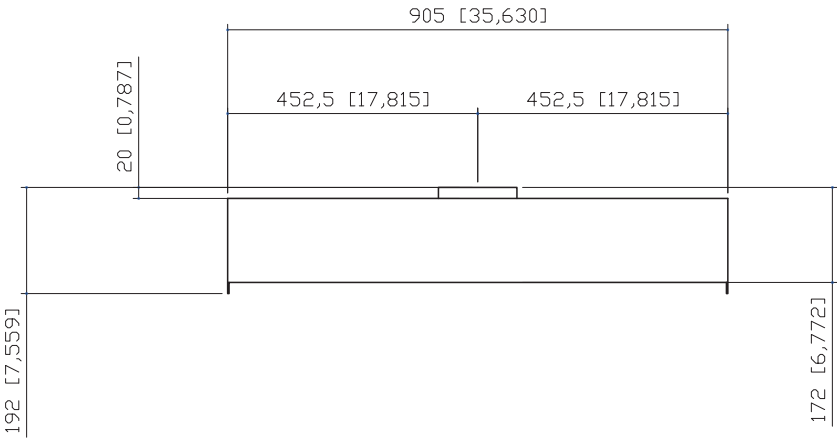


Tiziano KTZ 425 hood technical data | hood + triple oven



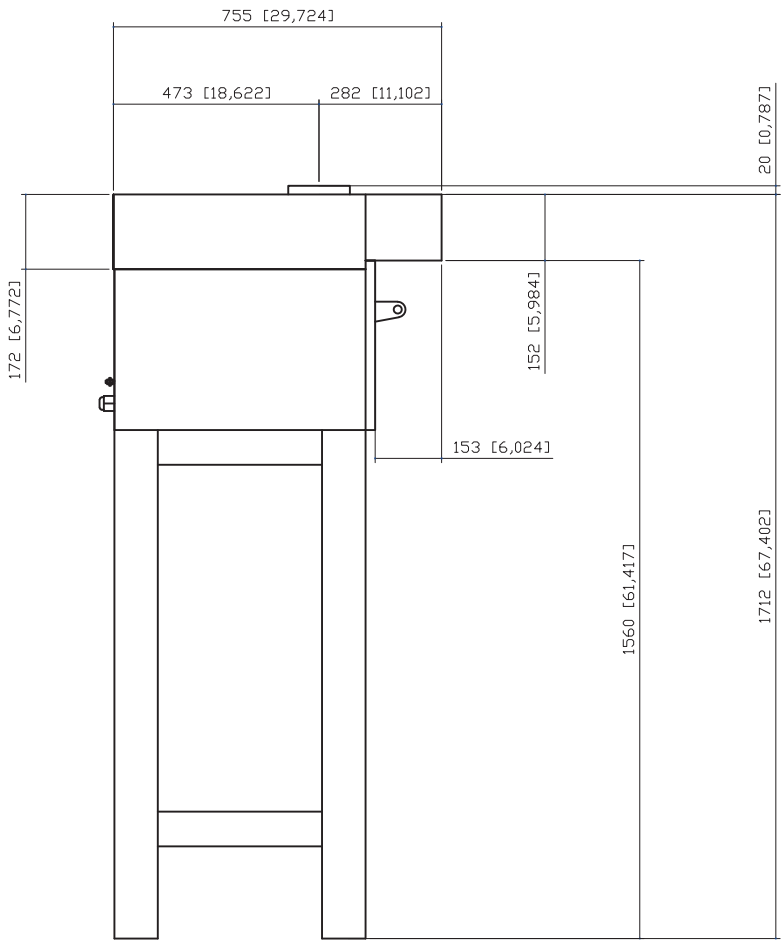
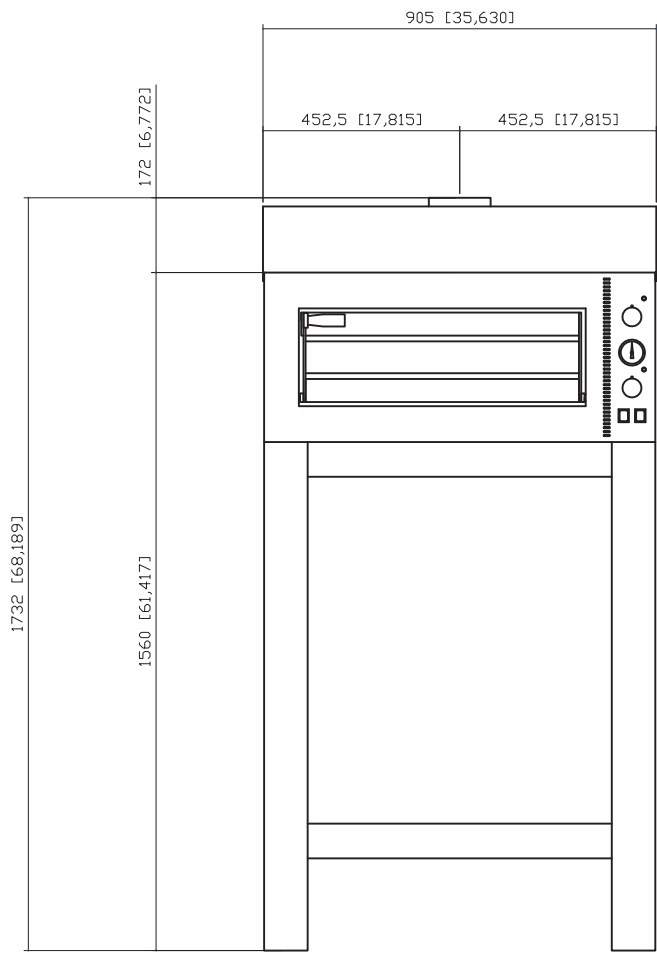
Tiziano KTZ 425 hood technical data | hood + quadruple oven



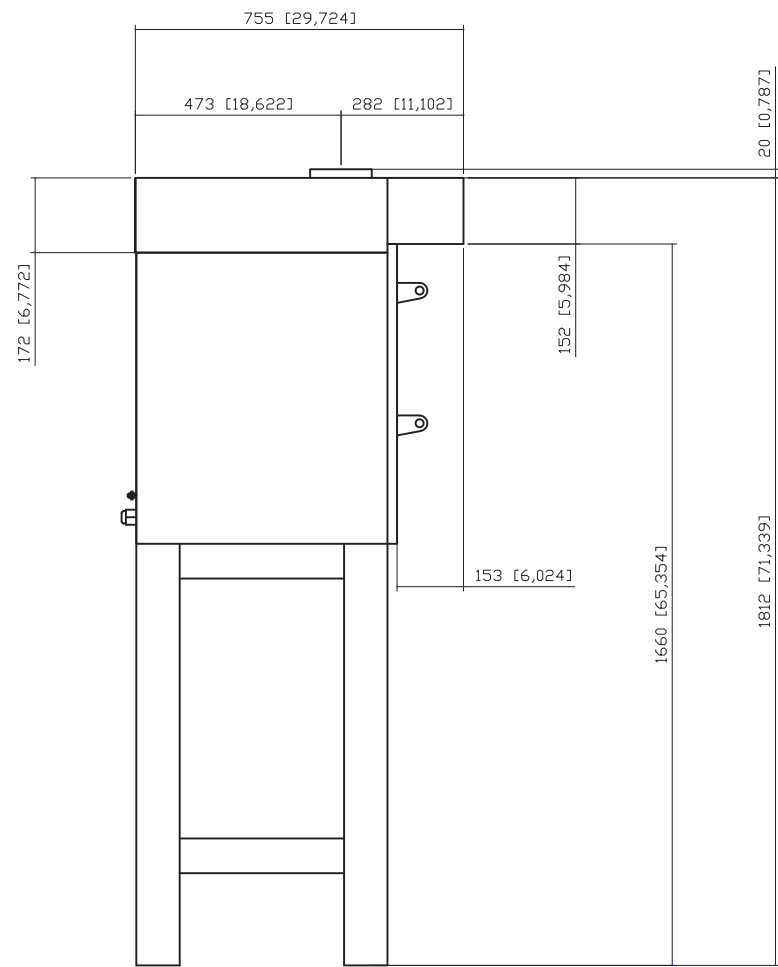
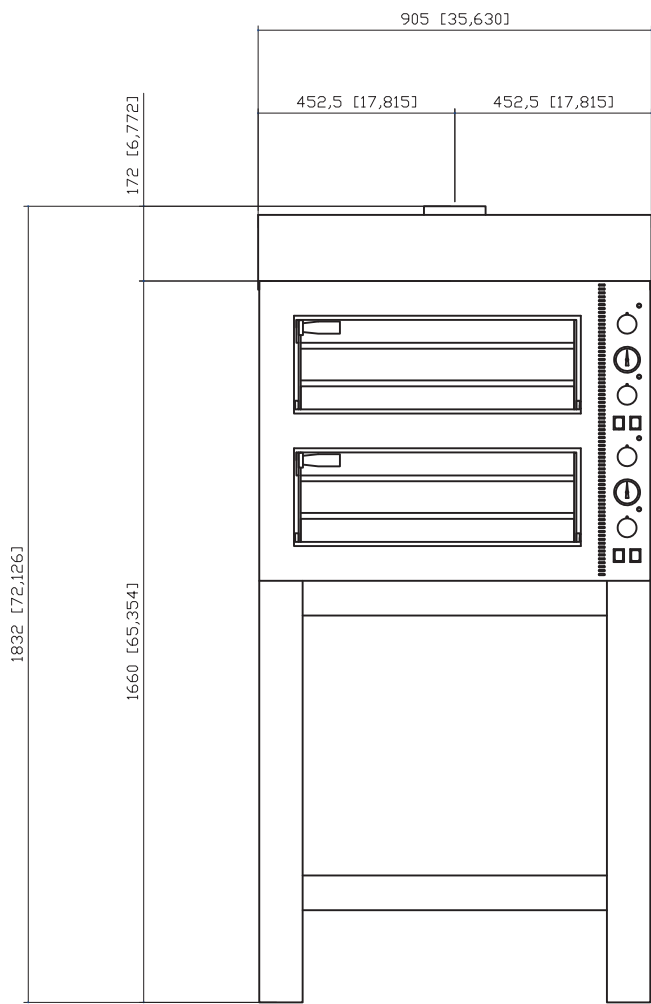




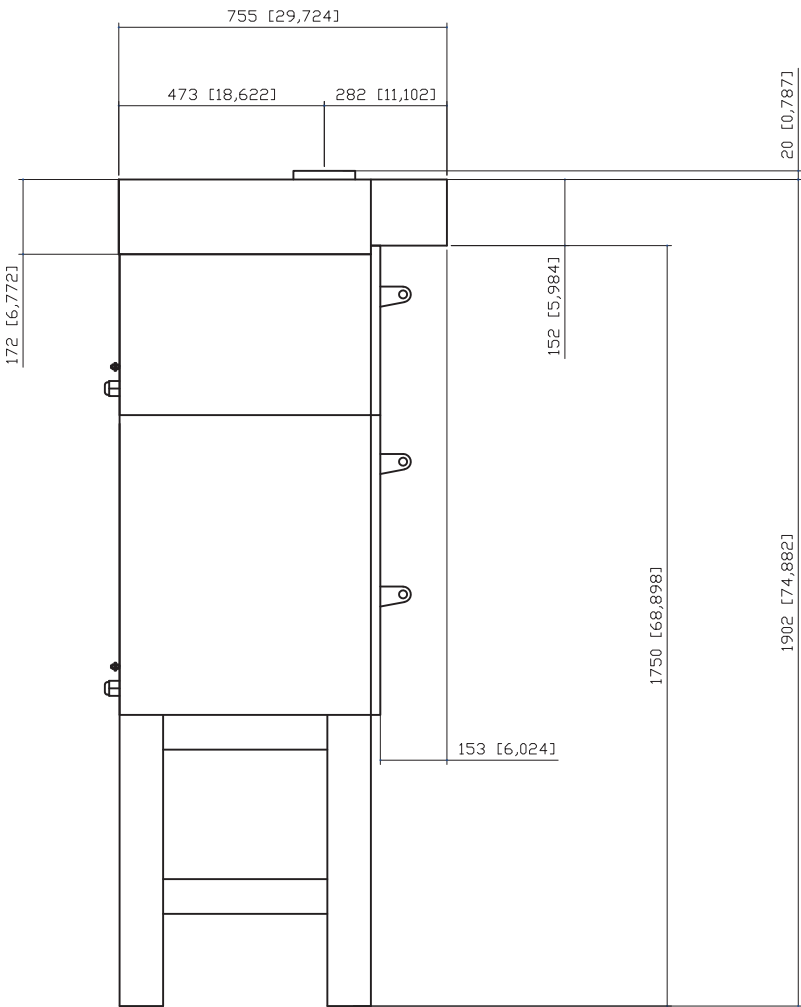
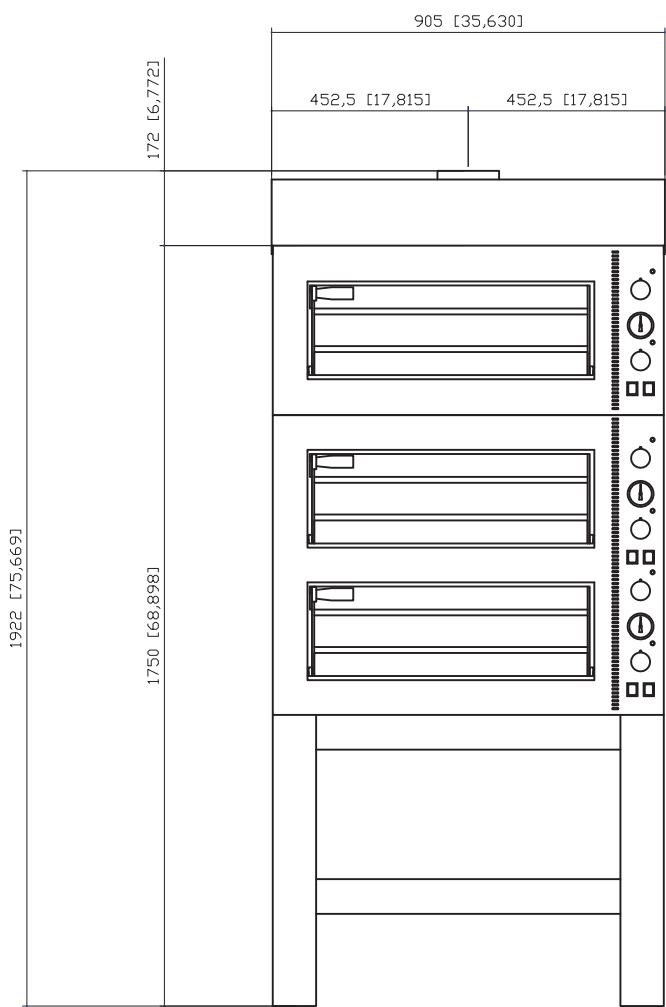
Tiziano KTZ 230 hood technical data | hood + single oven



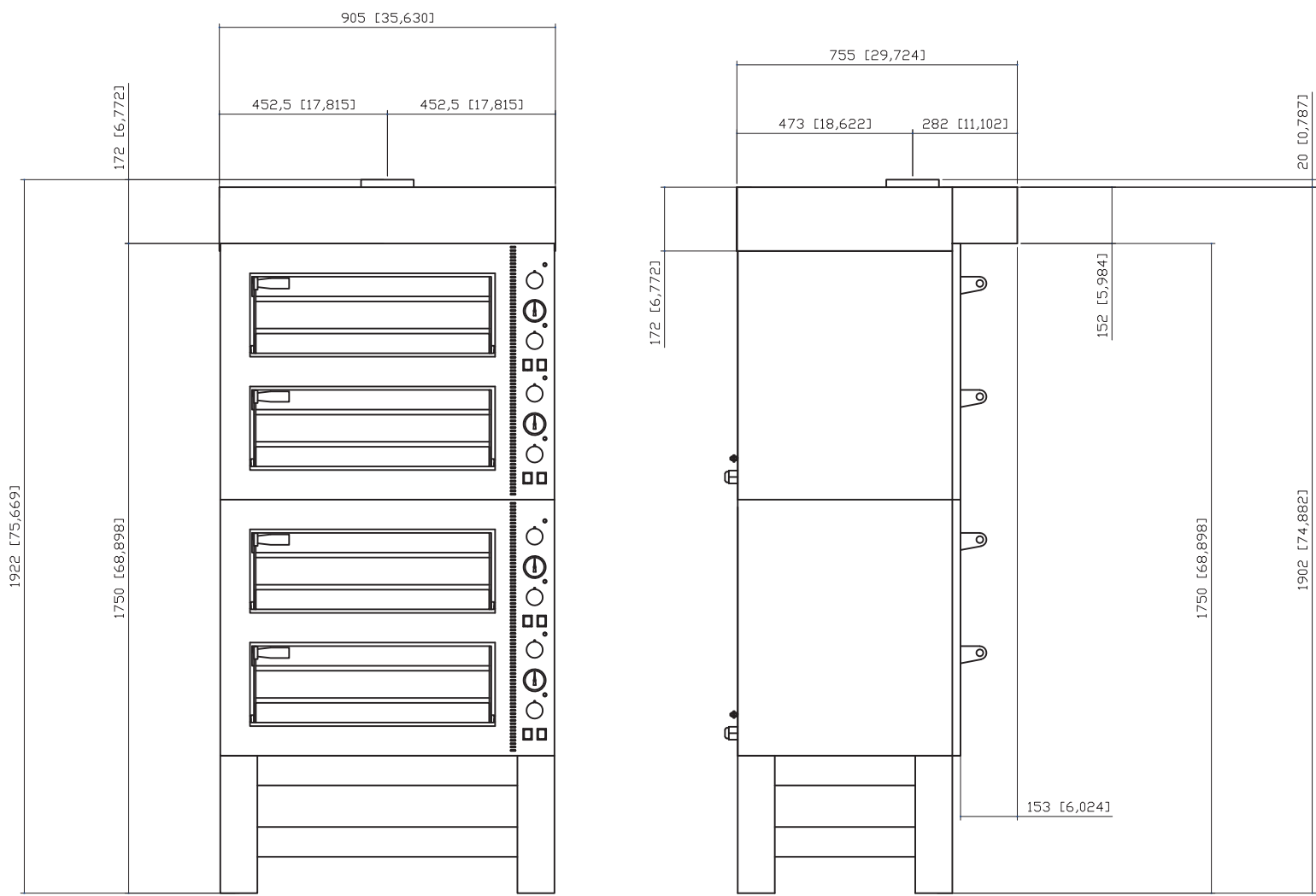
Tiziano KTZ 230 hood technical data | hood + double oven

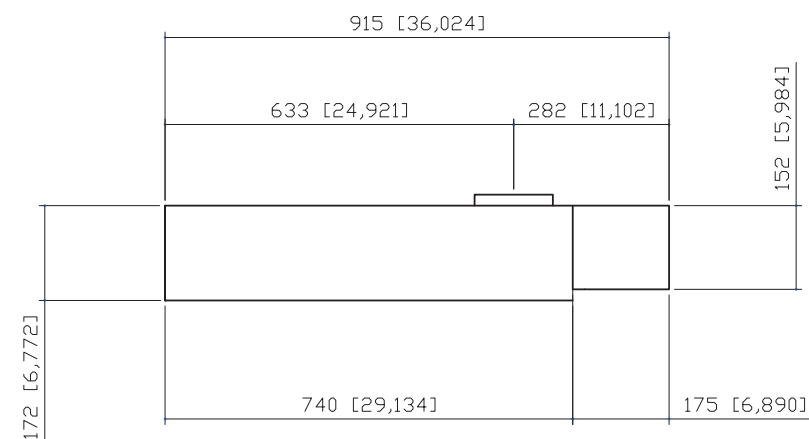
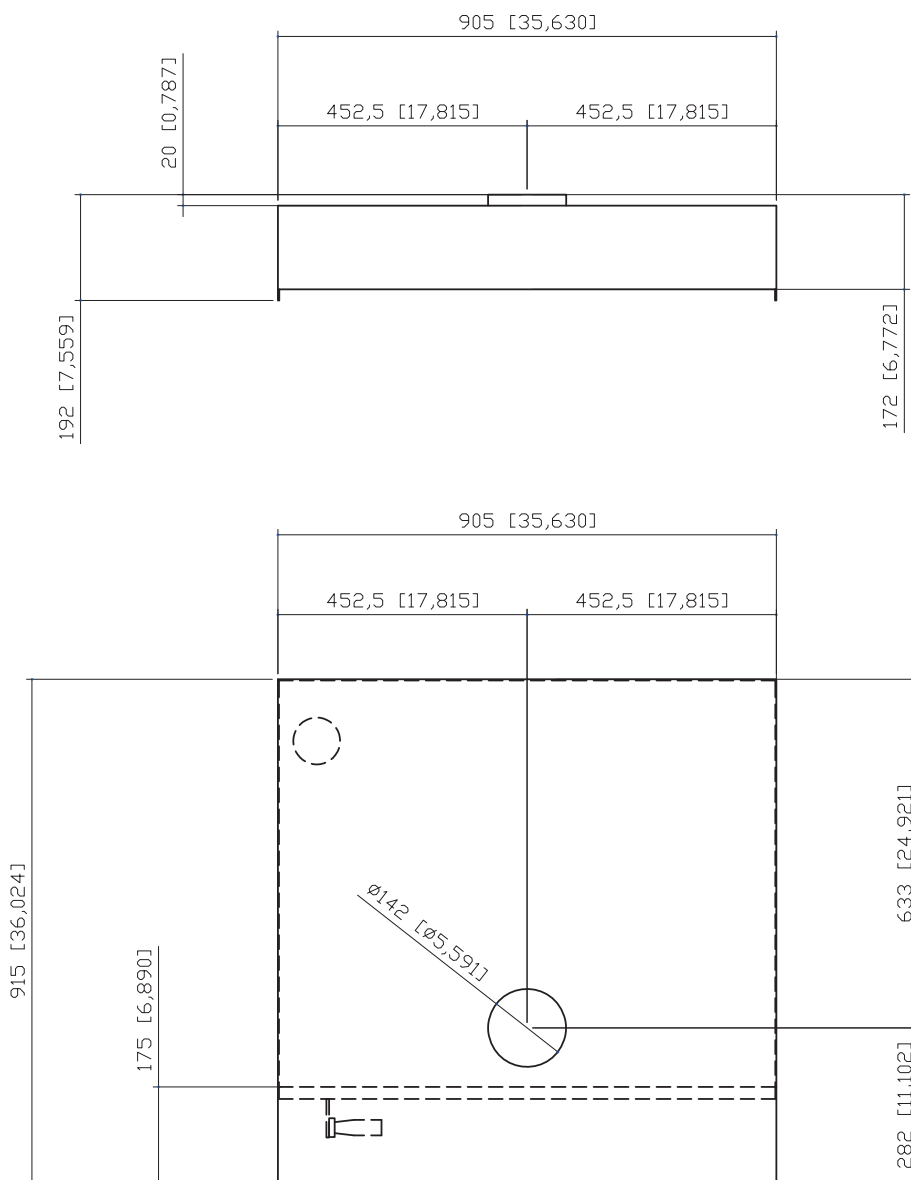


Tiziano KTZ 230 hood technical data | hood + triple oven

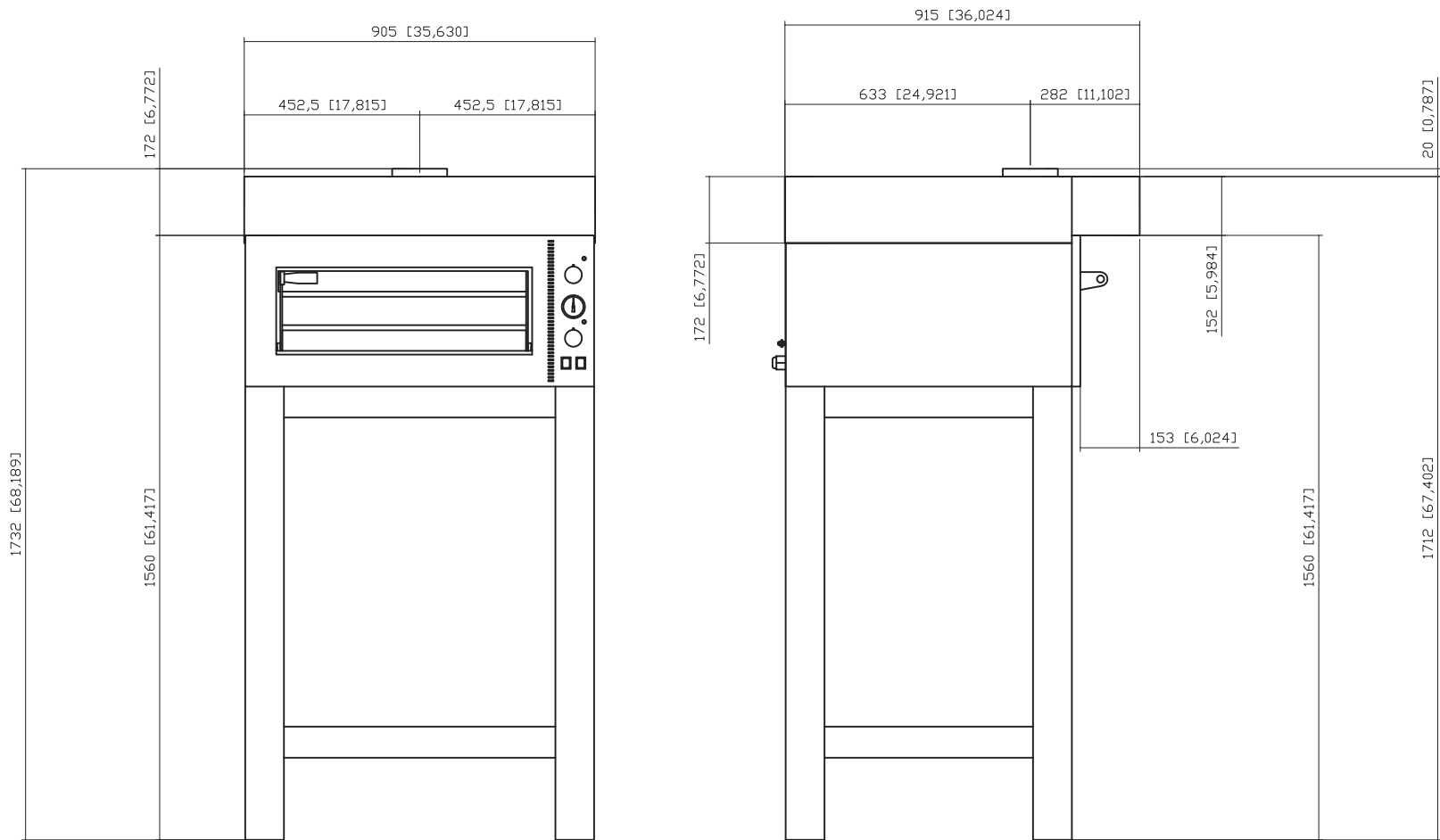


Tiziano KTZ 230 hood technical data | hood + quadruple oven

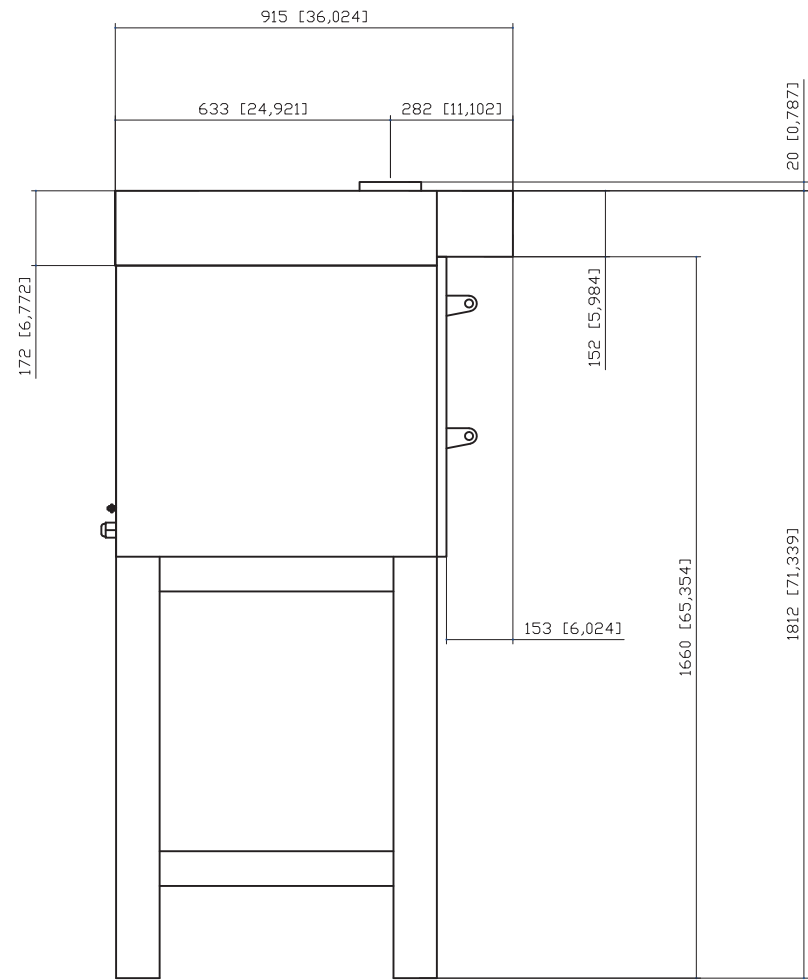
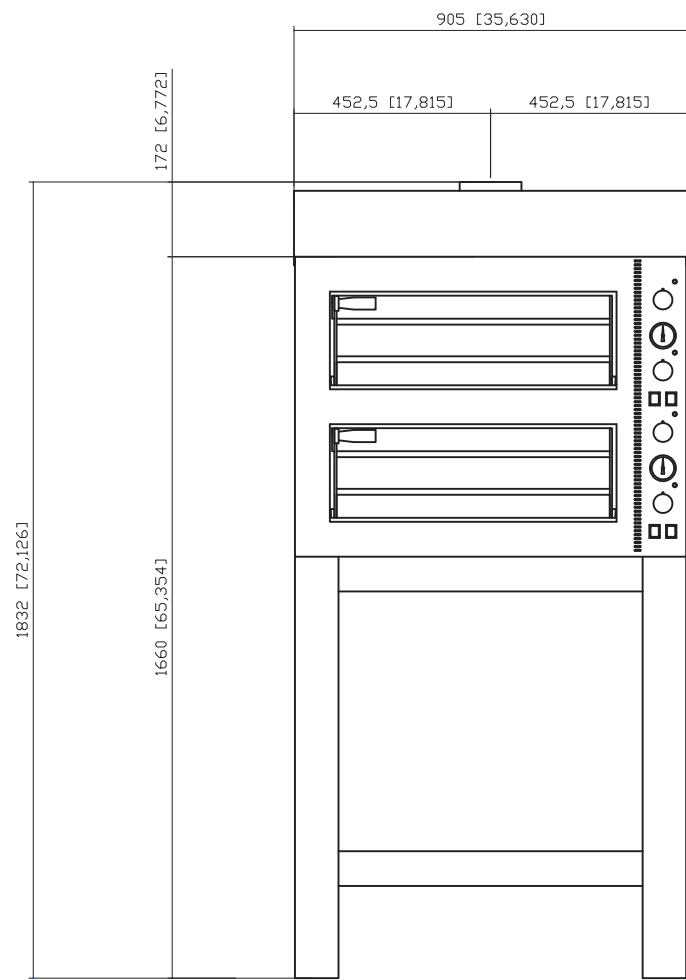




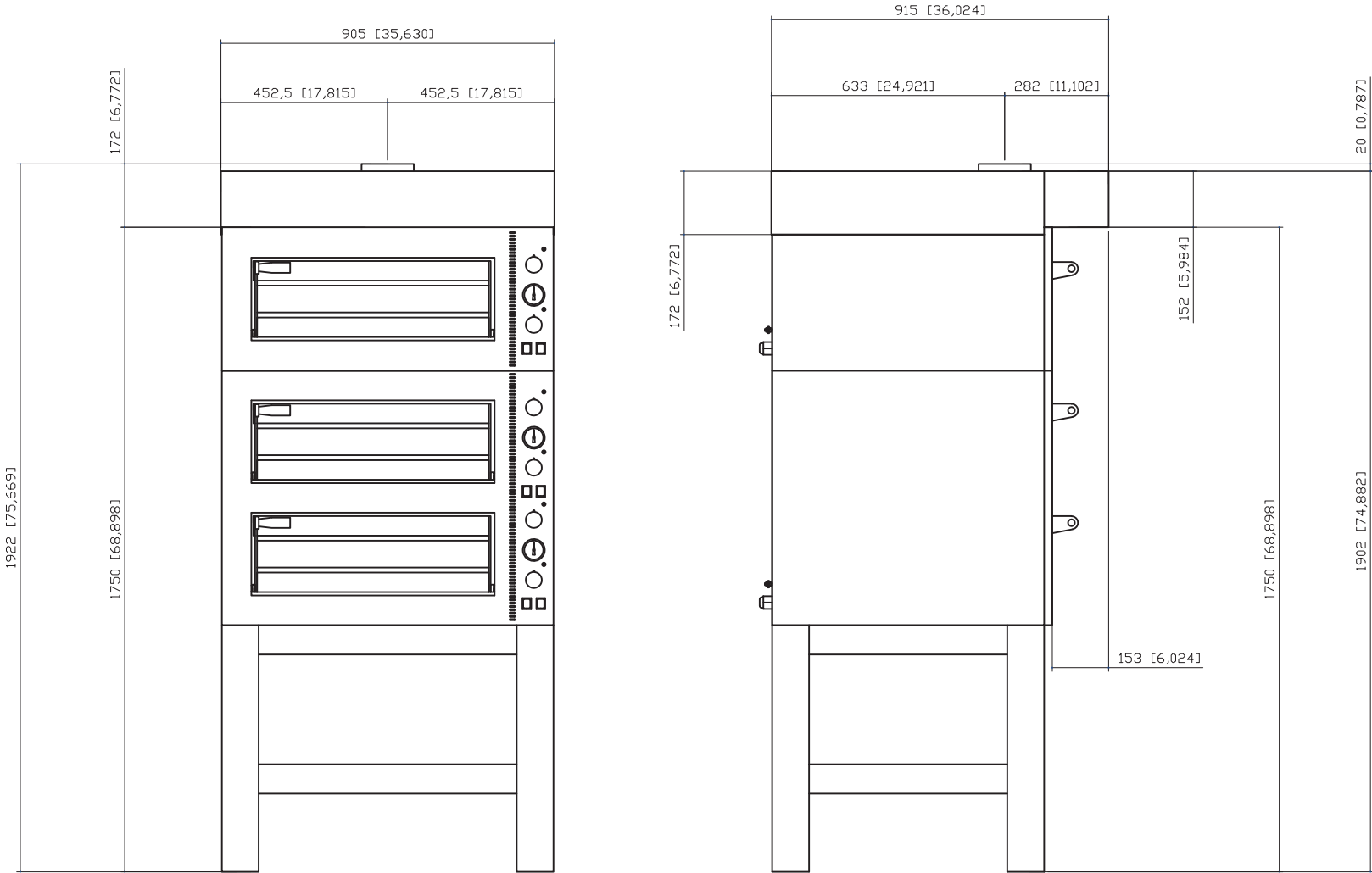
Tiziano KTZ 430 hood technical data | hood + single oven



Tiziano KTZ 430 hood technical data | hood + double oven

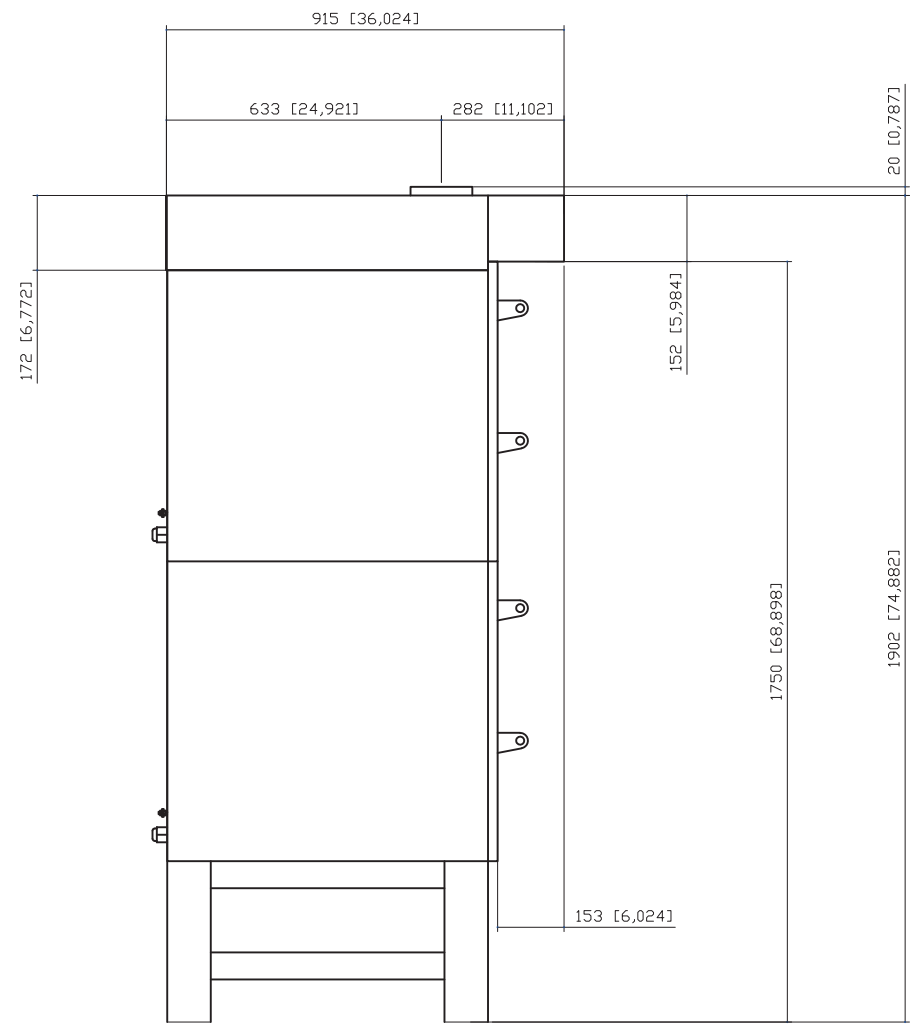
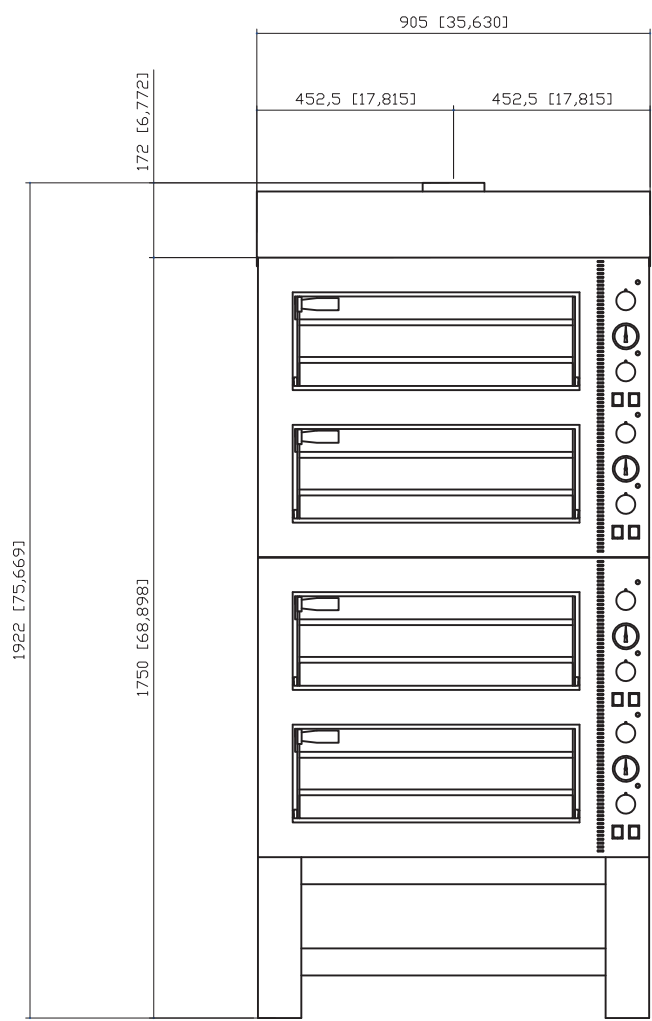


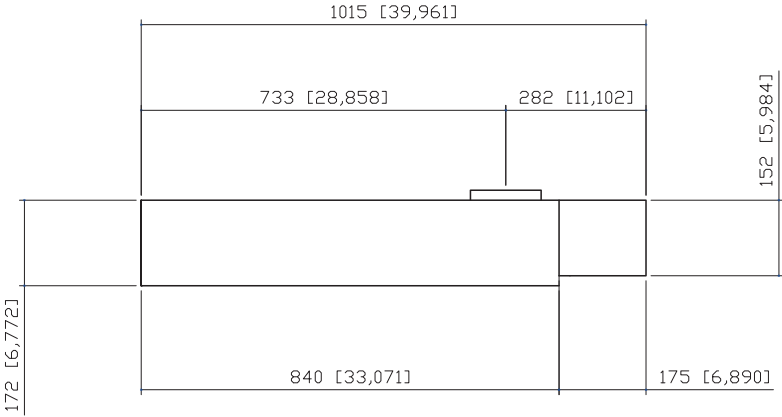
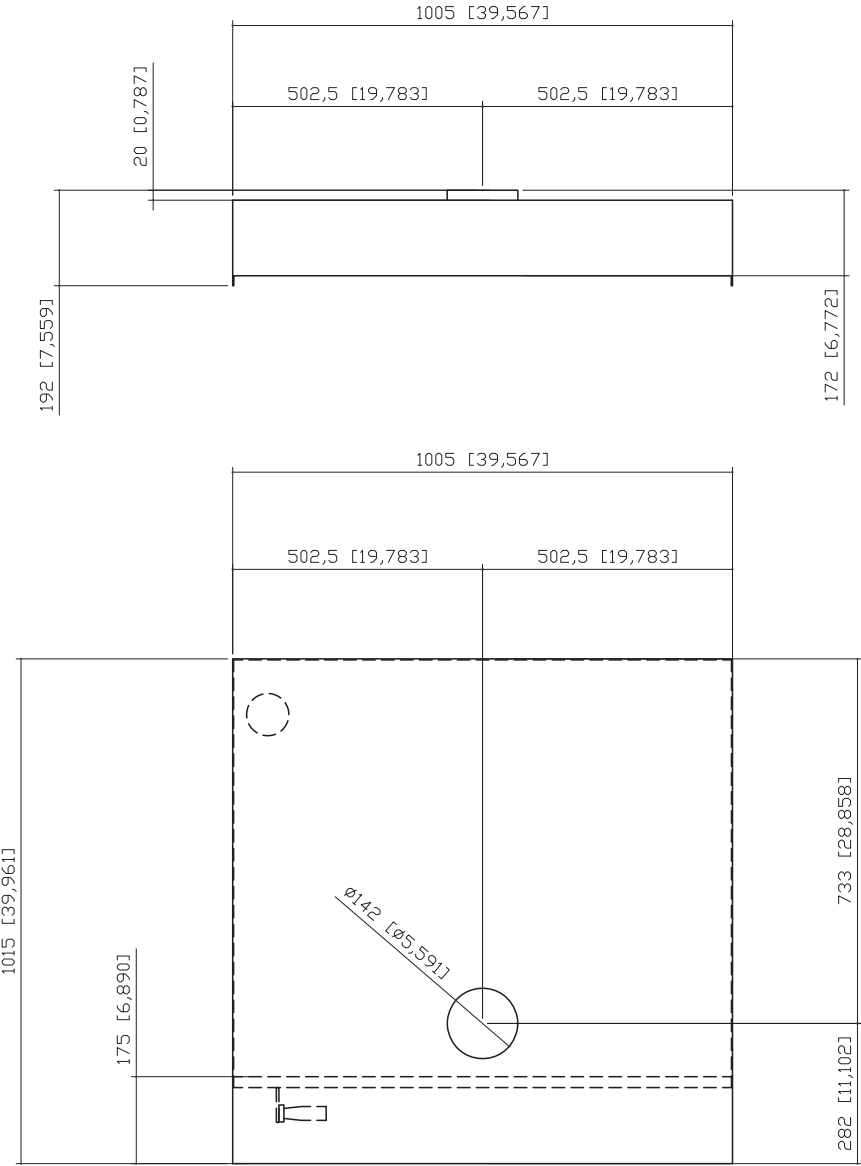
Tiziano KTZ 430 hood technical data | hood + triple oven



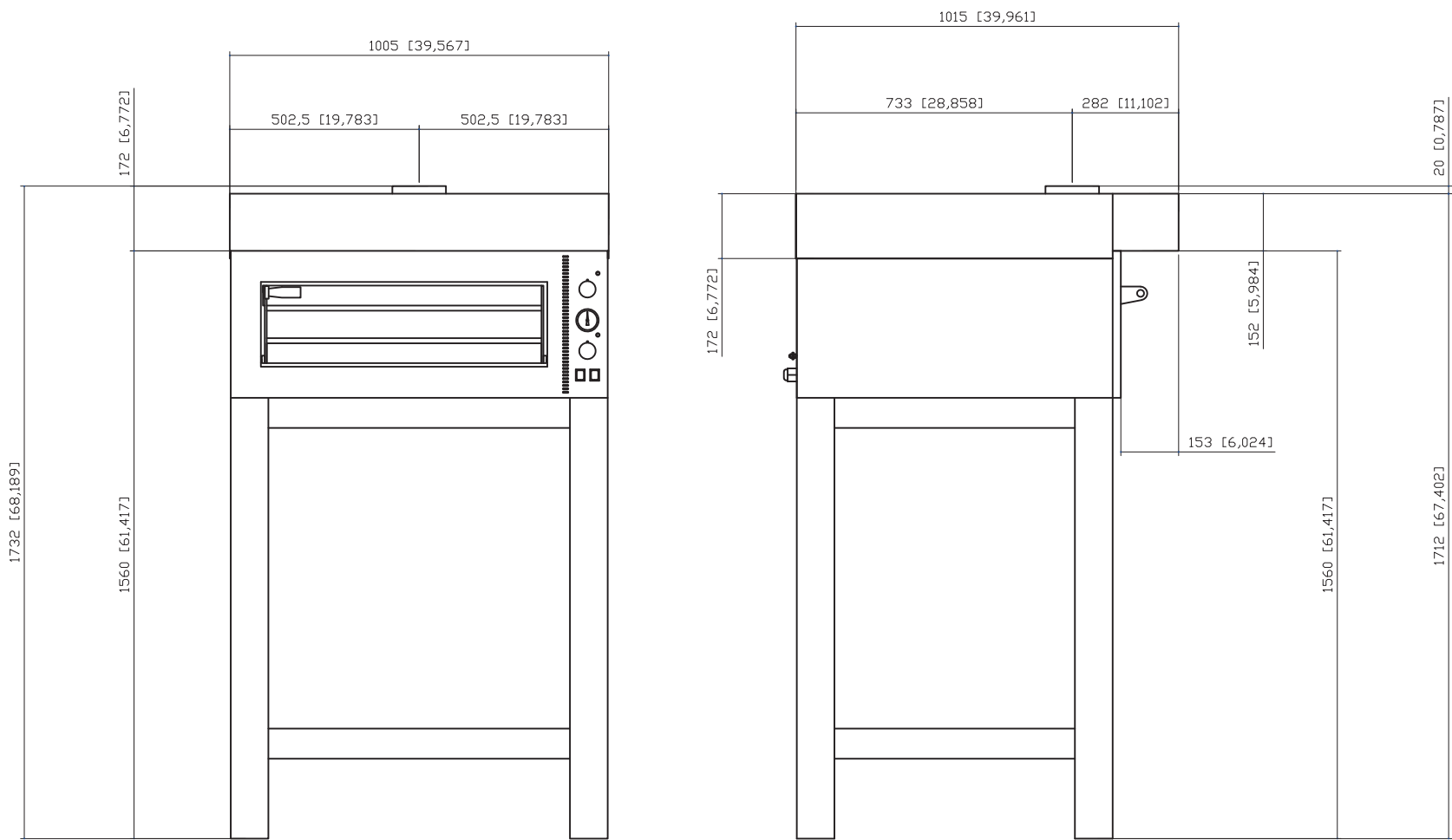


Tiziano KTZ 430 hood technical data | hood + quadruple oven

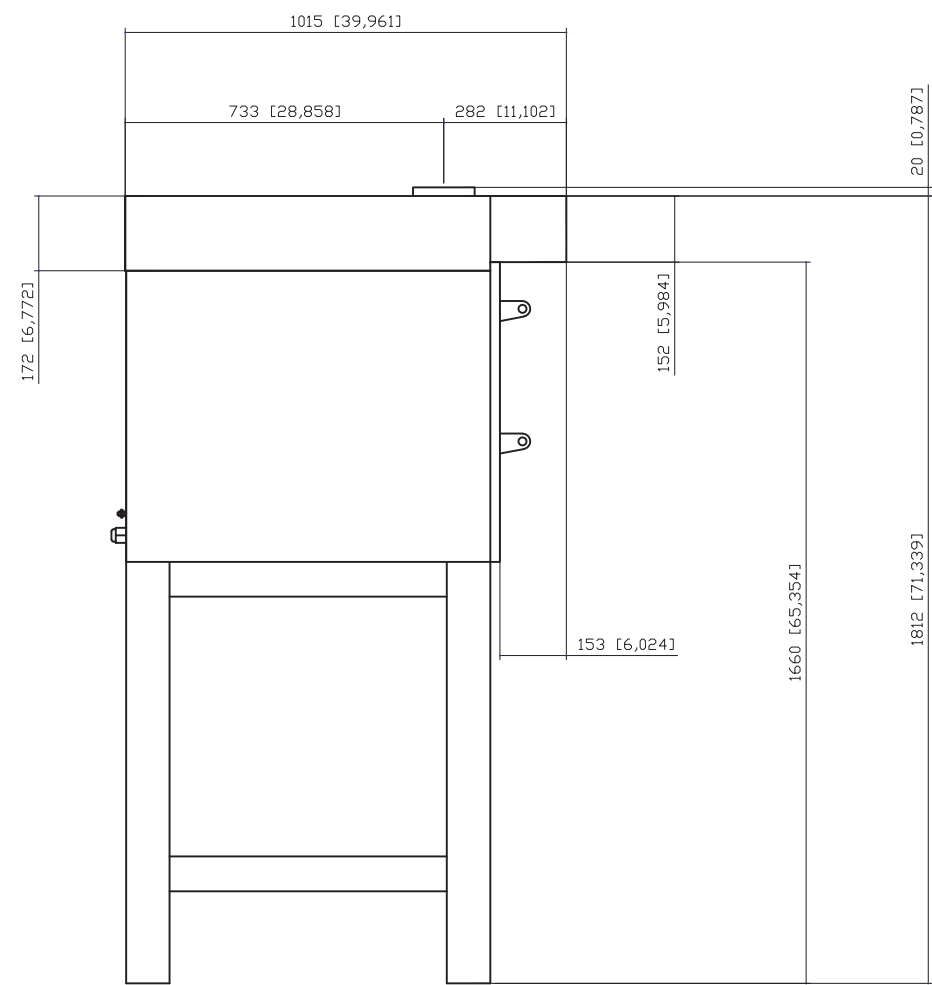
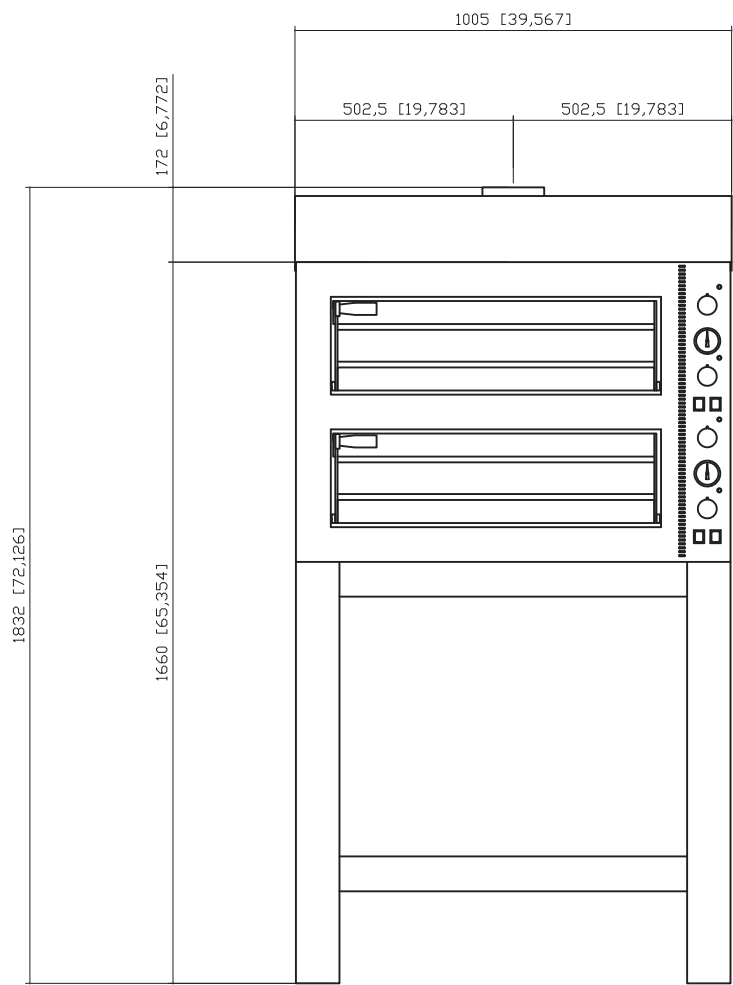




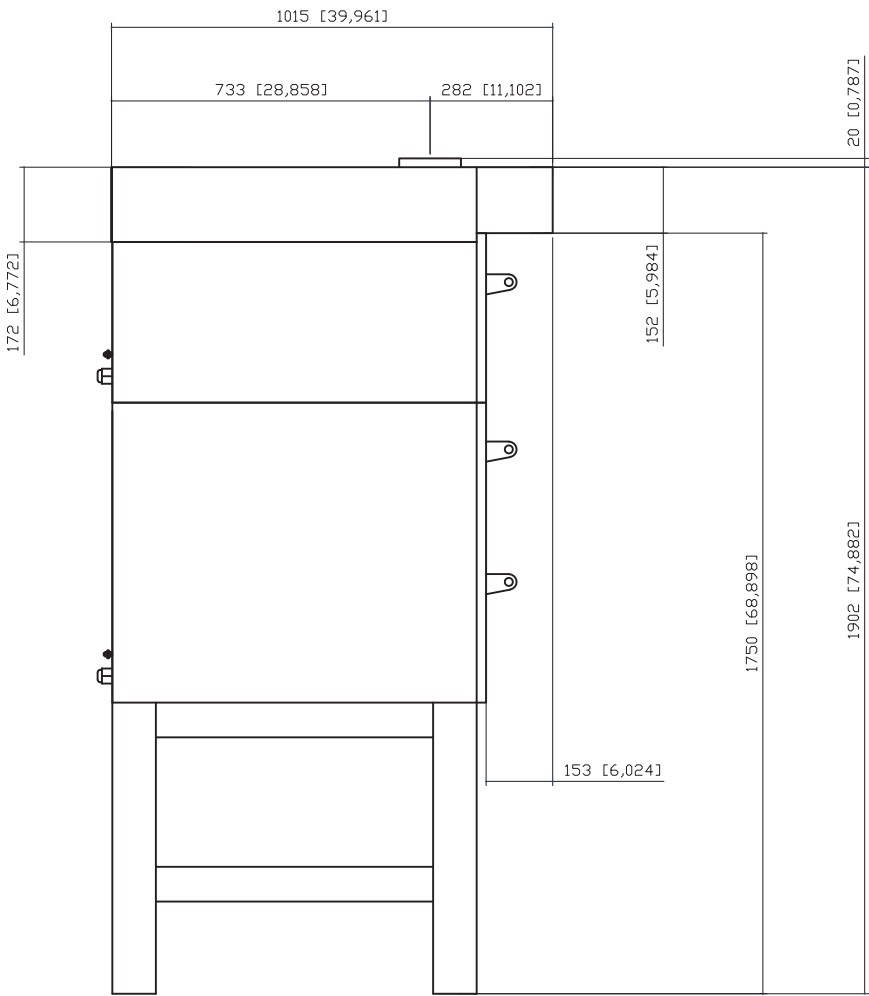
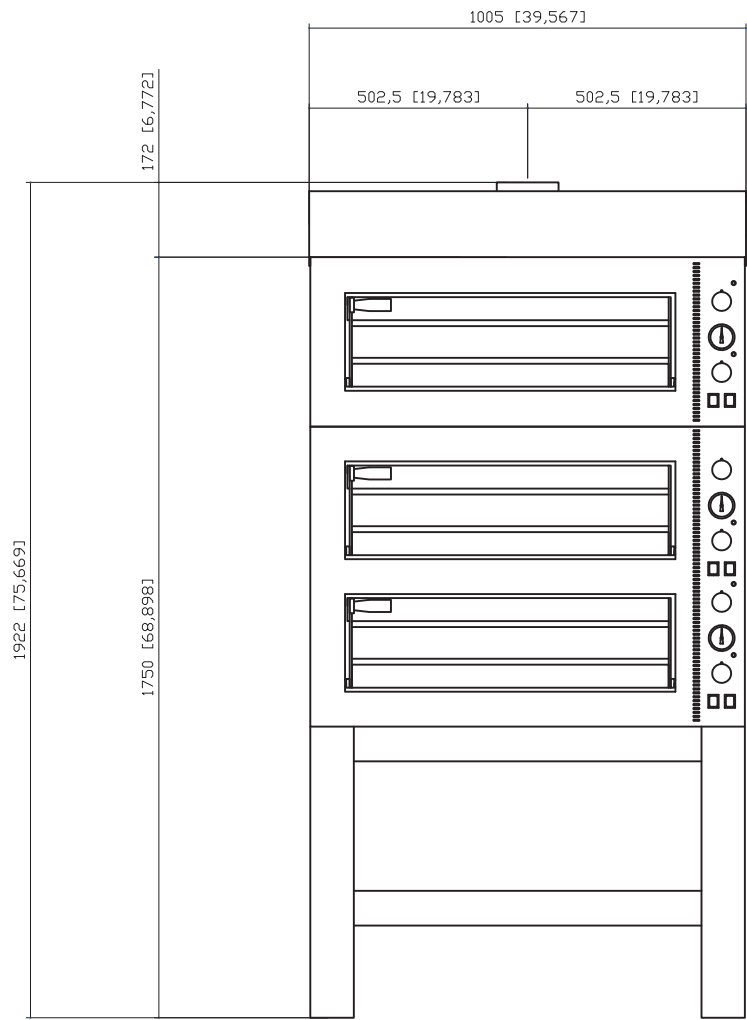
Tiziano KTZ 435 hood technical data | hood + single oven



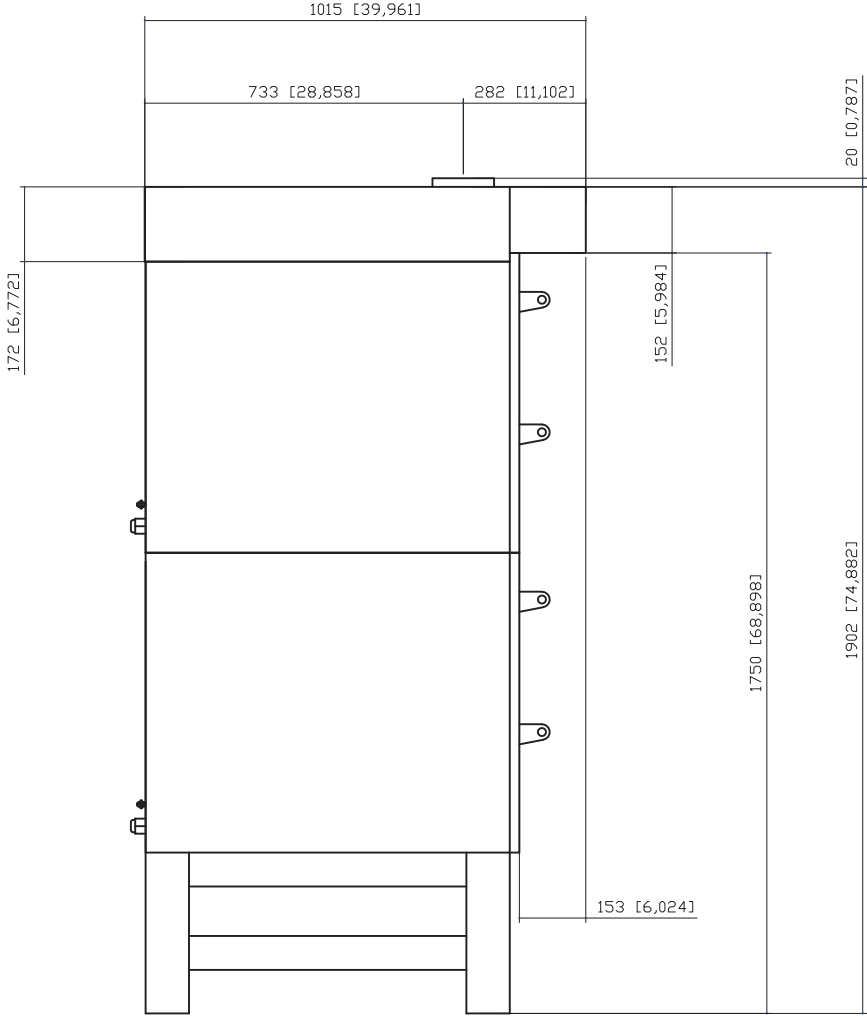
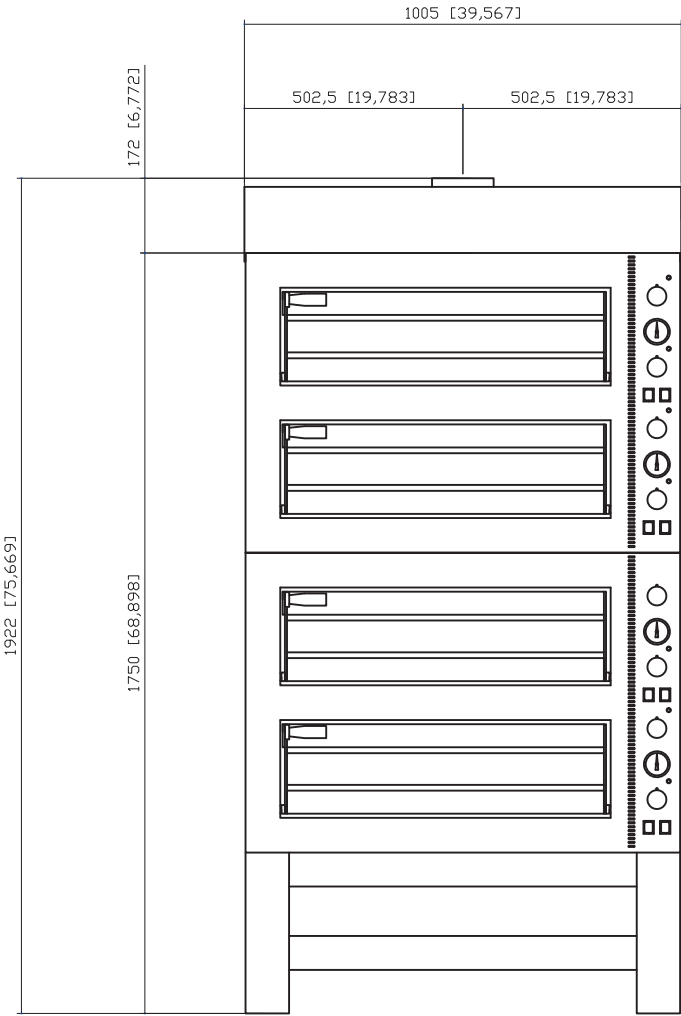
Tiziano KTZ 435 hood technical data | hood + double oven



Tiziano KTZ 435 hood technical data | hood + triple oven



Tiziano KTZ 435 hood technical data | hood + quadruple oven



#### Safety instructions

- Read this guide carefully before installing the appliance, and keep it with care in an accessible place for any future consultation by the various operators.
  - Moreover, the manual must always accompany the product through its life, even in case of transfer.
  - Before any movement or installation, check that the room is suitable and systems comply with the installation country standards and the specifications indicated on the appliance rating plate.
  - All installation, assembly and non-routine maintenance operations must be performed exclusively by qualified technicians that are authorised by the Dealer, in compliance with the regulations in force in the user country, and with the regulations on systems and work safety.
  - Unauthorised actions, tampering or modifications that do not follow the information provided in this manual can cause damages, injuries or fatal accidents and null and void the warranty.
  - It is forbidden to install the hood in environments at risk of explosion.
  - Installation or maintenance that fails to comply with the instructions in this manual may cause damage, injury or fatal accidents.
  - Persons not involved with the appliance installation may not pass through or stand in the work area during appliance assembly.
- The serial plate provides important technical information. This is vital in case of a request for maintenance or repair of the equipment: please do not remove, damage or modify it.
  - Failure to follow these regulations may cause damage or even fatal injury, subsequently invalidating the guarantee and relieving the Manufacturer of all liability.

#### Symbols used in the manual and on the labels applied to the machine



Indicates that caution is required when performing an operation described in a paragraph that bears this symbol. The symbol also indicates that maximum operator awareness is required in order to avoid unwanted or dangerous consequences



Reference to another chapter where the subject is dealt with in more detail.



Manufacturer's tip



Indicates that the surfaces marked with this symbol may be hot and must therefore be touched carefully



Indicates that it is necessary to read carefully the paragraph marked with this symbol before installing, using and maintaining the equipment

## Transport

### ► Fig. 5

Fitted with personal protection equipment, transport the appliance to the installation location.

Use suitable equipment, capable of dealing with its weight: persons not involved with the appliance installation may not pass through or stand in the work area during the appliance assembly.

During the transport, pay particular attention to passing through openings and/or doors.

## Preliminary operations

### ► Fig. 6

Carefully remove the protective film.

If any glue residue is left on the surfaces, remove it with soapy water but without any corrosive or abrasive products or sharp or pointed instruments.



Check that all the parts making up the hood are in good condition and without any faults or breakages, if that is not the case, contact the Dealer for the procedures to follow.



Fig. 5

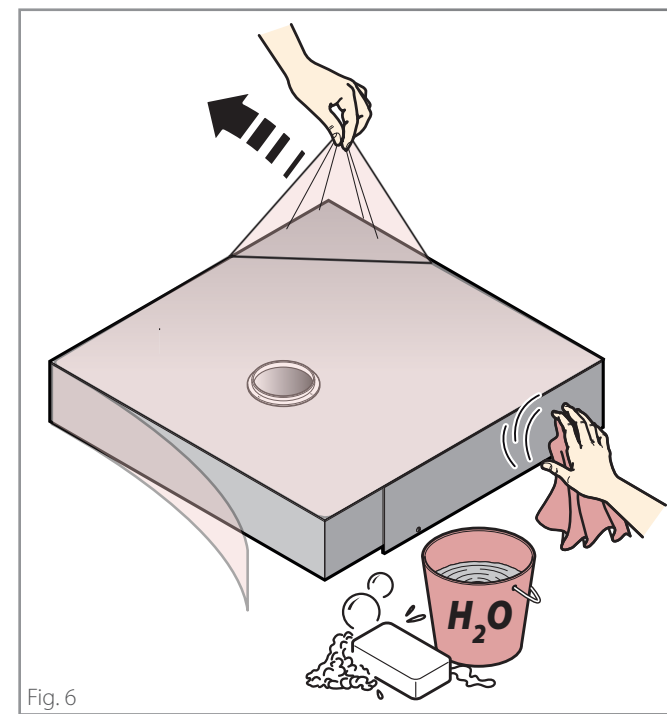


Fig. 6

## Serial number plate reading

### ► Fig. 7

The serial number is on the back of the appliance.

It provides important technical information that is vital in case of a request for maintenance or repair of the appliance: please do not remove, damage or modify it.

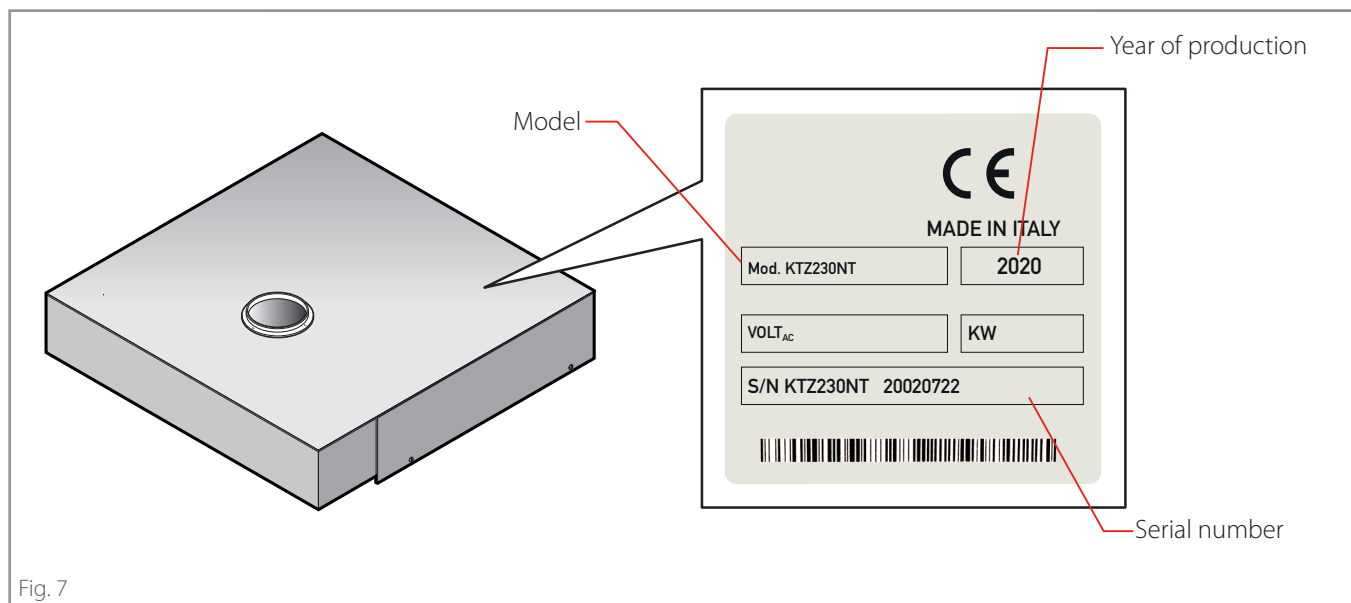


Fig. 7



## Positioning and connection to the oven below

 The hoods can be positioned **only** on a Tiziano oven.

► **Fig. 8**

Fix the hood to the oven below acting as shown in the figure. Make sure that between hood and ceiling there is a distance of about **850 mm [33.46 in.]**.

## Smoke extraction

The oven is fitted with a flue in the top to get rid of the steam from the cooking chamber. This steam, together with the one from the door during the work phases, **must be conveyed outside** through the hood.


► **Fig. 9**

The hood must be connected to a flue for the exclusive use of the appliance that complies with current regulations and that has a diameter that allows the passage of an exhaust pipe "A" measuring Ø150mm [Ø5,91 in.] which corresponds to the diameter of the pipe to be mounted on the hood by means of a clamp "B" (the pipe and the clamp are not supplied by the Manufacturer). We recommend that the evacuation pipe "A" is in stainless steel resistant to high temperatures and complies with the regulations in force.

► **Fig. 10**

The hood is not equipped with a suction motor, however it is possible to connect it to a **suitable suction system** of the user: connect a Ø150mm [Ø5,91 in.] exhaust pipe "D" to the hood with a clamp "E" and interpose mandatorily a fume damper "F" between the extractor and the hood (the extractor, the connection pipe and the damper are not supplied by the Manufacturer).

We recommend that the evacuation pipe "D" is in stainless steel resistant to high temperatures and complies with the regulations in force.

 Provide a condensate drain (not supplied) to permit normal control and draining operations.

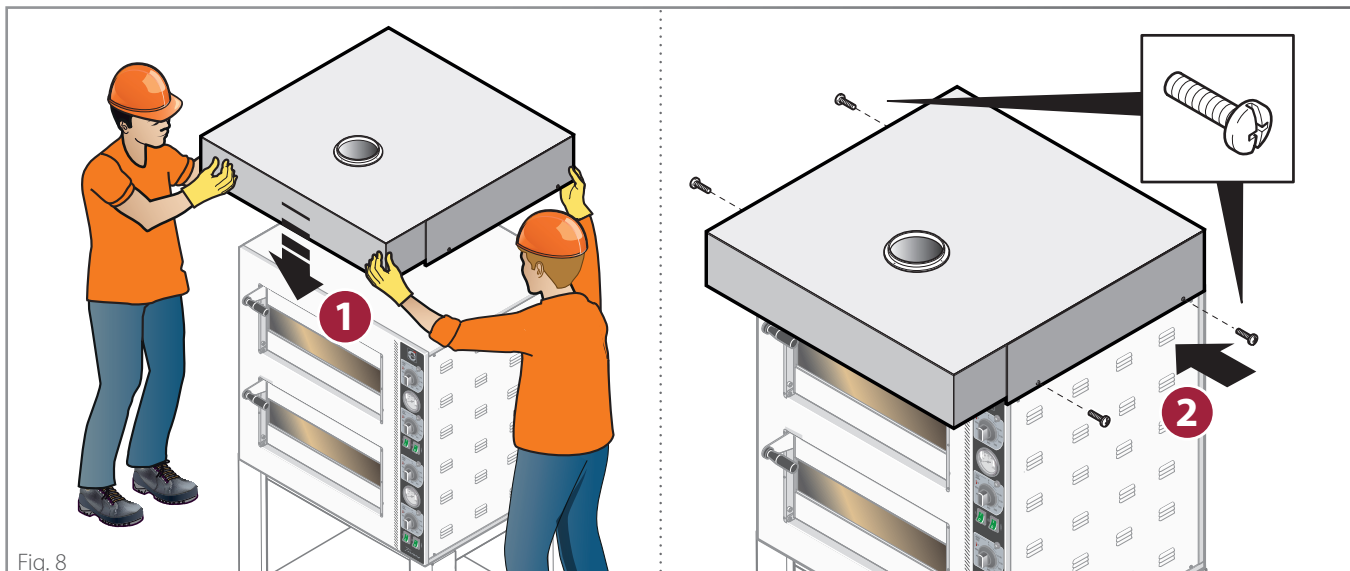


Fig. 8

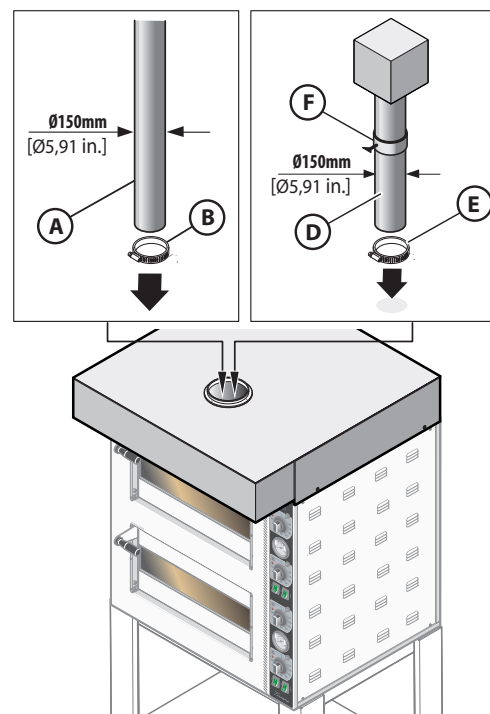


Fig. 9

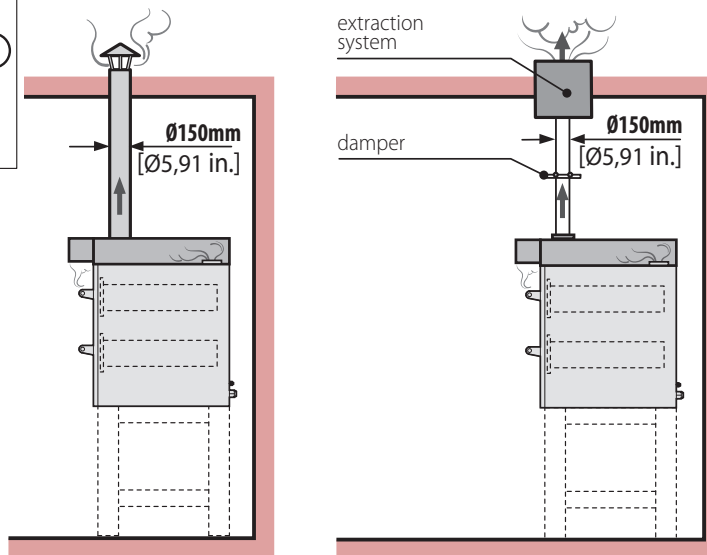


Fig. 10

## Inserting the hood filters

► Fig. 11

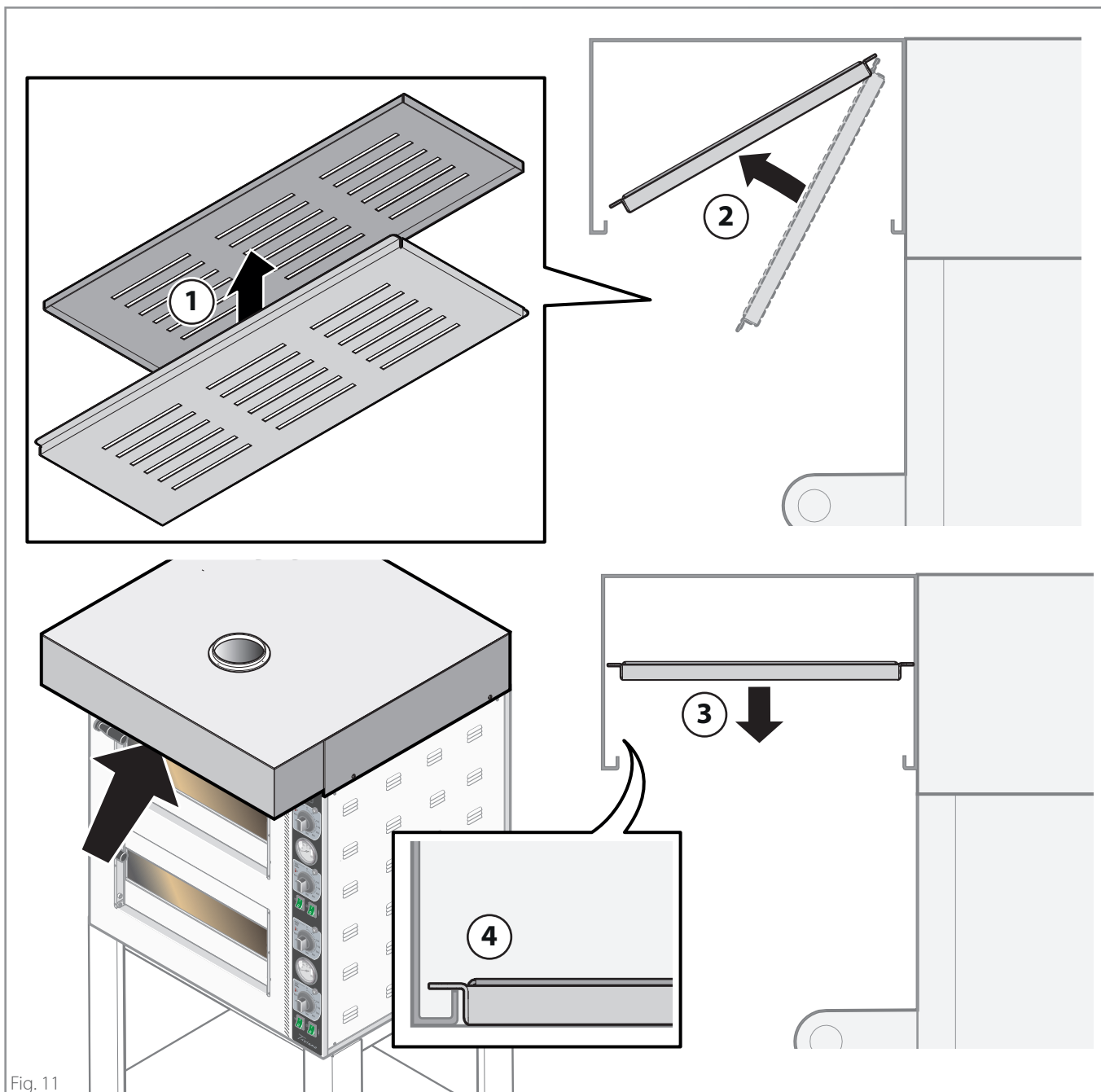


Fig. 11

## Pre-testing and final inspection

Before delivery to the customer, the hood is checked and tested in the Manufacturer's factories.

The "production process check sheet" enclosed with it guarantees that **each** step in the production process, from assembly to packaging, was carefully checked from both the operating and safety standpoints.

After installing the appliance, check and mark with a "√" all the boxes of the table on the side: this will confirm the installation is complete and correct.

√	Positioning checks
	Has the protective film been removed from the surfaces?
	Is the equipment perfectly bound to the underlying oven?
	Is the current chimney flue adequate and does it complies with the current regulations?
√	Miscellaneous
	Does the user have all the documentation relative to the hood?
	Has the user been correctly trained on the use and maintenance of the hood?

The company cannot be held liable for any print or transcription errors, reserving the right to make changes where deemed suitable without prior notice.  
Partial reproduction without the Manufacturer's consent is prohibited. Measurements are purely indicative and not binding.  
The original language used to prepare this manual is English: the Manufacturer is not responsible for any translation/interpretation or print errors.

# Safety instructions

- Read this guide carefully before using and maintaining the appliance, and keep it with care in an accessible place for any future consultation by the various operators.
- Moreover, the manual must always accompany the product through its life, even in case of transfer.
- Unauthorised actions, tampering or modifications that do not follow the information provided in this manual can cause damages, injuries or fatal accidents and null and void the warranty.
- Use or maintenance that fail to comply with the instructions in this manual may cause damage, injury or fatal accidents.
- The serial plate provides important technical information. This is vital in case of a request for maintenance or repair of the equipment: please do not remove, damage or modify it.
- Some parts of the equipment can reach high temperatures. We advise you to avoid touching surfaces and not to get materials either flammable or sensitive to heat near the appliance.
- Do not rest objects on the hood, above all if built in material sensitive to heat.
- Do not use the hood without the front filters.
- The equipment is a product that can only be used for steam extraction from the cooking chamber and by opening the underlying oven door. A use other than the stated one is considered improper, potentially dangerous for people and animals and might permanently damage the appliance.

The improper use of the equipment shall void the warranty.

- This appliance can be used by children aged from 8 years and above and persons with reduced physical, sensory or mental capabilities or lack of experience and knowledge if they have been given supervision and instruction concerning use of the appliance in a safe way and understand the hazard involved. Children must not play with the appliance. Cleaning and user maintenance shall not be made by children without supervision.
- The staff using the appliance must be professionally prepared and periodically trained on its use, as well as the safety and accident prevention regulations.
- Children must be supervised to make sure they do not play with the appliance or parts of it.
- Check regularly that fumes can be discharged safely. Do not obstruct the duct for any reason.
- Do not use the hood as an anchor or shelf for other equipment or objects.
- Place the emergency phone numbers in a visible location.
- Failure to follow these regulations may cause damage or even fatal injury, subsequently invalidating the guarantee and relieving the Manufacturer of all liability.
- We recommend you have the appliance checked by your Dealer at least once a year.

## Knowing the hood

### ► Fig. 12

Your hood is a product that can only be used for extraction of steam from the cooking chamber and by opening the oven door underneath.



*These hoods do NOT have a suction motor, control panel or light.*

The main hood parts are:

- **A** - Hood structure
- **B** - Filters.

## Preparing to use the hood

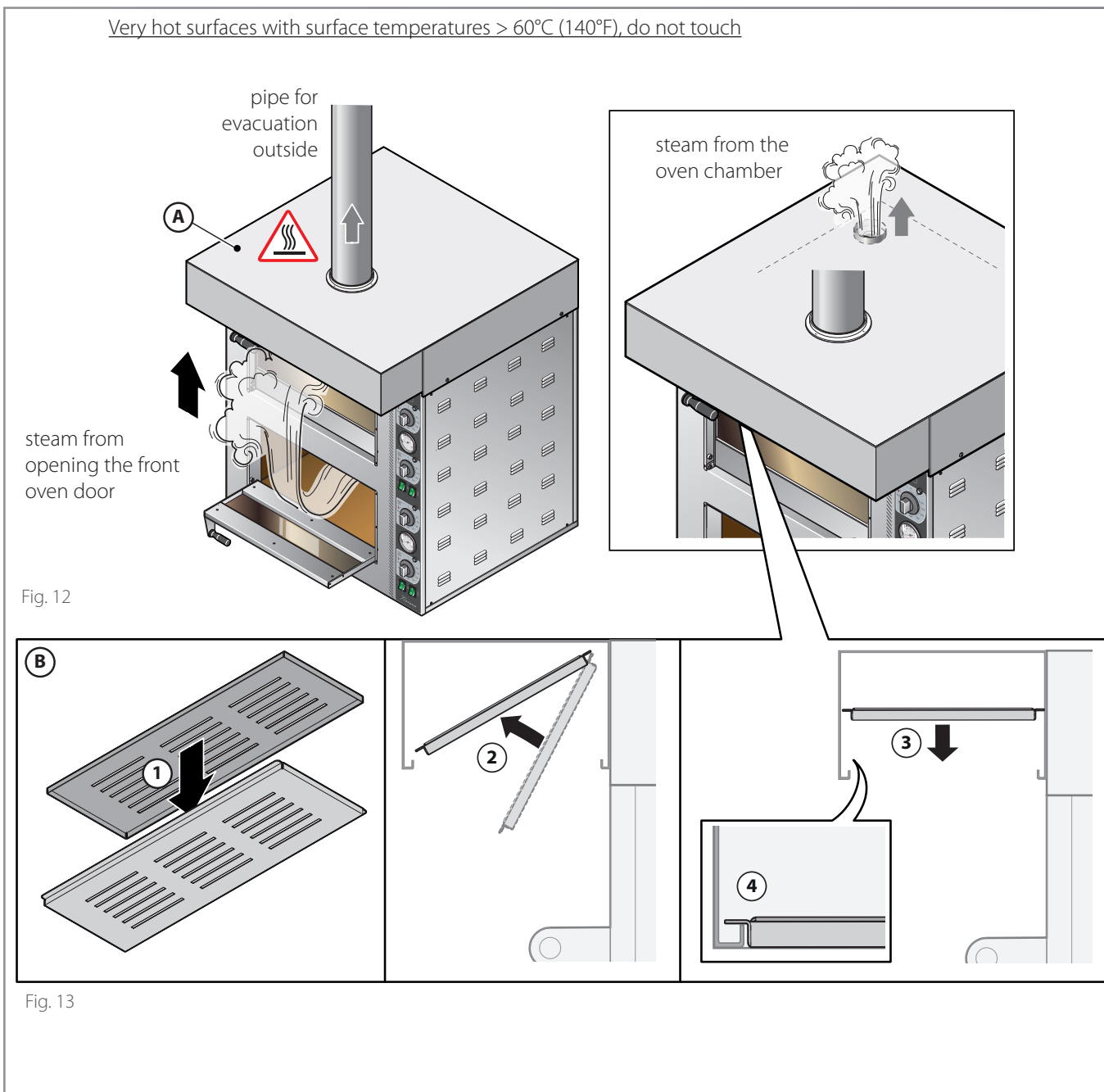
Accurately clean the hood, rigorously following the instructions in the specific chapter.



**Hood cleaning** on page [38](#)

### ► Fig. 13

Check that the hood has the filters fitted; if not, insert them in the housing provided as shown in the figure.



# Hood use, maintenance and cleaning

## Using the hood

The hood extracts steam from the cooking chamber and from the opening of the oven door underneath.



*These hoods do NOT have a suction motor, control panel or light.*

► Fig. 14



Some equipment parts can reach high temperatures (e.g. exhaust pipe). We advise you to avoid touching surfaces and not to get materials either flammable or sensitive to heat near the appliance.

Do not rest objects on the hood, above all if built in material sensitive to heat.

## Hood cleaning

### Warnings



Before any cleaning, it is necessary to **switch off the mains power** and wear suitable personal protection equipment (e.g. gloves, etc.). The user must carry out only routine maintenance, for extraordinary maintenance, contact the Dealer requesting service from an authorised technician. The Manufacturer warranty does not cover damages due to negligent or incorrect maintenance or cleaning (e.g. use of unsuitable detergents).



**Any cleaning must be carried out with the hood and underlying oven completely cold and wearing adequate personal protection devices (e.g. gloves, etc.).**



When cleaning any part or accessory do NOT use:

- abrasive or powder detergents;
- aggressive or corrosive detergents (e.g. hydrochloric or sulphuric acid, caustic soda, etc.);
- abrasive or sharp tools (e.g. abrasive sponges, scrapers, steel brushes, etc.);
- steamed or pressurised water jets.

## Cleaning the external steel parts

► Fig. 15

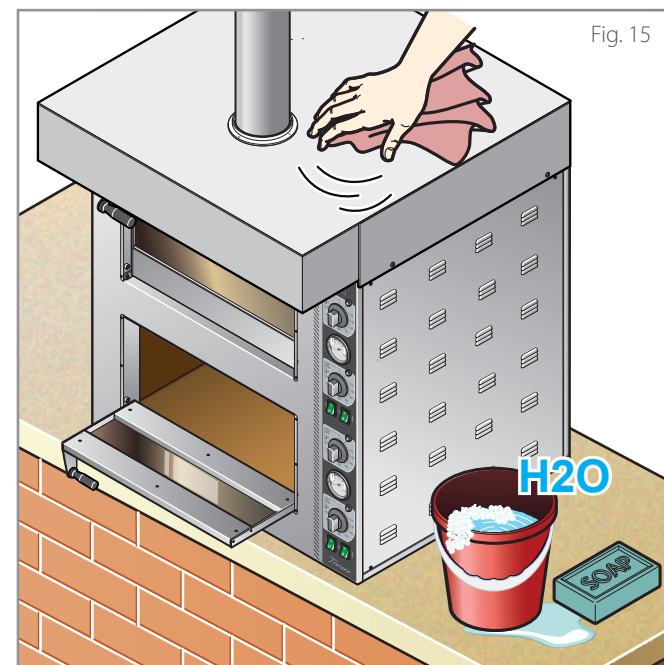
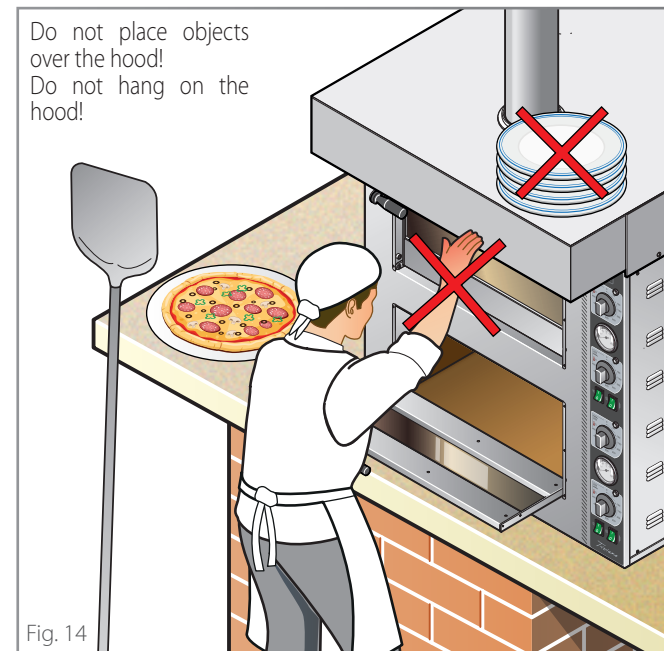
Use a cloth dampened with hot soapy water and end with rinsing and drying.

## Hood downtime for prolonged periods

Protect the steel outside surfaces passing over them with a soft cloth slightly damp with Vaseline oil.

Before resuming operations:

- accurately clean the equipment;
- inspect the equipment before using it.



## Replacing the filters

### ► Fig. 16

The user must replace **only** the stated components, i.e. the filters; the figure shows how to remove them.

The filters can be cleaned with soapy water, a neutral detergent or in the dishwasher. Before putting them back in place, dry them carefully. Do not use the hood without the filters.

As replacements, always use original spare parts to be requested from the Dealer: using non original parts might cause injuries to people, non optimal performance and even serious damage of the appliance itself.



**The replacement of the filters must be carried out with the hood and underlying oven completely cold and wearing adequate personal protection devices (e.g. gloves, etc.).**

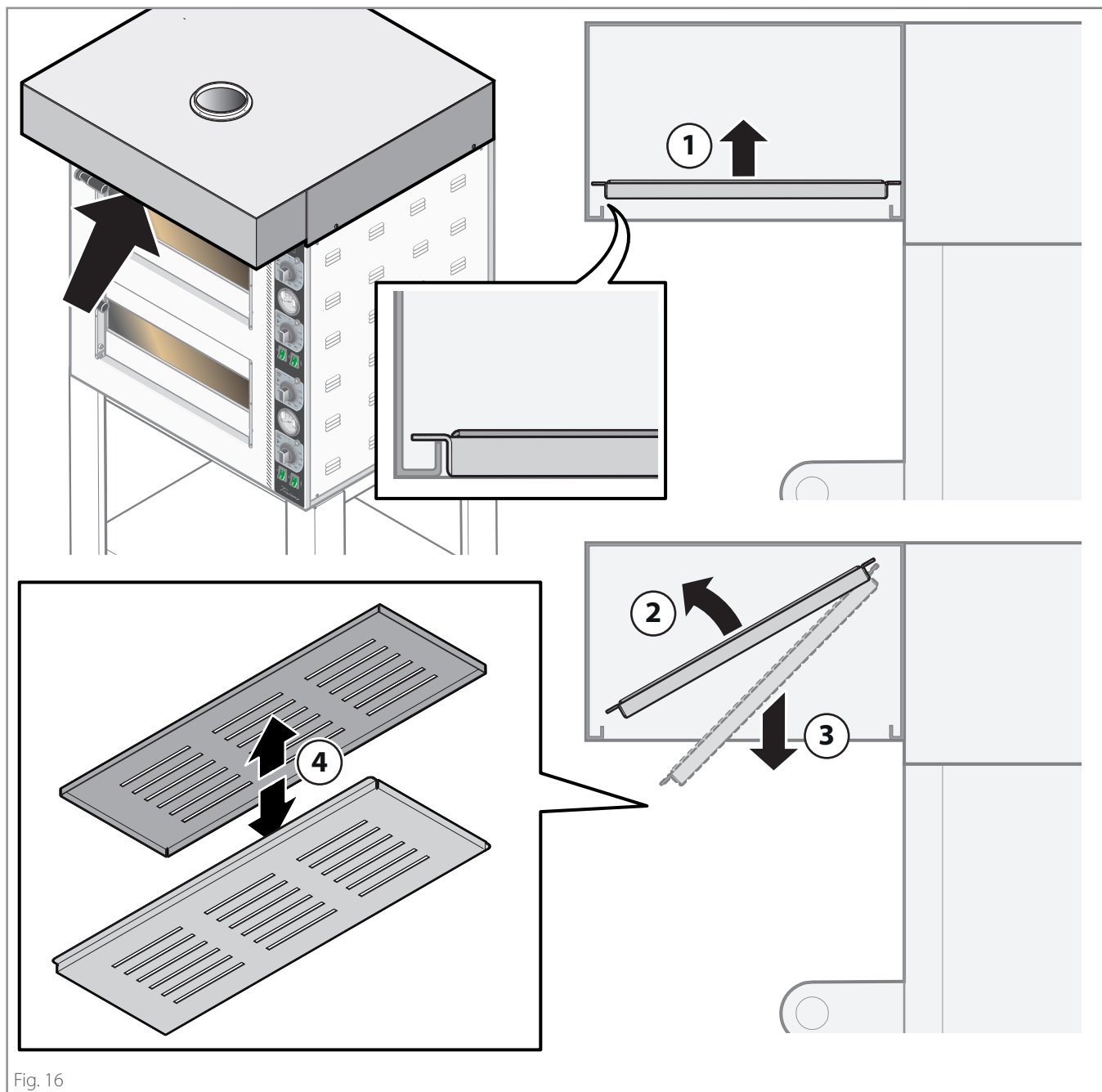


Fig. 16

## **Disposal at end of life**

### **Equipment disposal**

At the end of its useful life, the product must not be treated as other waste but must be disposed of separately. All the equipment has been made with recyclable metal materials (stainless steel, iron, aluminium, zinc plate, copper, etc.) that as a percentage make up more than 90% of the weight. Attention must be paid to the management of this product at the end of its life, reducing any negative impact on the environment and improving the efficiency of resources, applying the principles of “who pollutes pays”, prevention, preparation for re-use, recycling and recovery. Please remember that illicit or incorrect product disposal is punishable by law.

### **Information on disposal in Italy**

In Italy the product must be delivered to the Collection Centres (also called ecological islands or ecological platforms).

### **Information on disposal in European Union countries**

If you wish to dispose of this equipment, we suggest you contact the local authorities or the Dealer and ask for the correct method of disposal.



# Warranty

- 8.1 Each Product sold is to be considered compliant when delivered in the quantity, quality and type indicated in the written Confirmation. Please refer to the provisions of art. 1.1.
- 8.2 The Seller warranties:
  - (a) that the Products are free from defects in material and workmanship, and
  - (b) that (except in the case of defects known or to be known by the Buyer) the Products are of merchantable quality.
- 8.3 Any hidden defects of the Products must be reported in writing by the Buyer within 8 days of discovery, under penalty of forfeiture. Packaging defects are excluded - even if they have caused defects or damage to the internal Products; in fact, packaging defects have to be reported at the time of delivery, pursuant to art. 5.8 of the present General Conditions of Sale.
- Written notices by the Buyer for the Products defective shall contain a full description of the defects and faults as well as the mention of the delivery date and that of defect discovery of the Products.
- Warranty is excluded if the defect derives from the Buyer's actions, such as (and not limited to) incorrect installation of the Product, use of the Product in a manner that does not comply with the normal method of use, failure to comply with the instructions contained in the "user and installation manual", tampering with the Product. Warranty does not cover normal wear and tear of the Product due to use.
- The seller is responsible for defects that occur within one year from the activation of the warranty as provided for in art. 8.12 of the present General Conditions of Sale.
- 8.4 The Seller shall have the right to examine, or have a representative examine, the defective Product and, should the existence of the defect be ascertained, the Buyer shall be entitled to repair or replacement, at the sole final decision of the Seller.
- Once the defect is reported, the Buyer must not use the Product until it is examined by the Seller or by their deputy. In case the Seller realises that the Product was used after the notification of the complaint, the Buyer loses the right to obtain replacement or repair.
- 8.5 Replacement or repair will take place under the following terms:
  - a) The Seller may repair the defective Products by going - or sending a deputy - to the place where such Products are located;
  - b) Alternatively, the Seller may repair the defective Product at its own factory, or other place chosen by the Seller;
  - c) Or alternatively, the Seller may opt for the replacement of the defective Products.
- In case the repair / replacement of the Products is not possible, the Seller will pay the Buyer a refund. Such refund shall be subjected to quantification, yet must not exceed the price paid for the Products. Any compensation for damage is excluded.
- 8.6 In case of repair of the Products at a place chosen by the Seller or in case of replacement of the defective Products, the shipment of the Product will be charged to the Buyer who must send them, at his own expense and risk, to the place indicated by the Seller.
- 8.7 In no case shall the Seller be held liable for any indirect or consequential damages and/or loss of profit that the Buyer may suffer arising out of or caused by defective or faulty Products such as (but not limited to) cancellation of orders by customers, penalties for late deliveries, forfeitures or indemnifications of whatsoever nature.
- 8.8 The Seller shall indemnify and hold the Buyer harmless from any liability or prejudices arising out of defective or faulty Products, unless the alleged liability arises from any negligent act or omission by the Buyer or any failure by the Buyer to perform its obligations.
- 8.9 The Seller shall not be liable for damage to persons and / or property that may derive from improper use of the Products and / or from any use, processing or transformation of the Products that do not comply with their intended use and / or with the instructions provided by the Seller, except the case of gross negligence or wilful misconduct by the Seller.
- The Seller will also not be liable in the event of damage to persons or property or in the case of malfunction or damage or deterioration of the Product deriving from the fact that the Product has been connected to a non-compliant electrical system.
- 8.10 The Buyer shall not be able to raise any claim for personal injury or damage to property other than those which are the subject of the contract, or for loss of profit, unless it is clear from the circumstances of the case that the Seller committed "gross negligence".
- 8.11 "Gross negligence" shall not include any and all lack of adequate care and expertise, but it is to be intended as an act or omission by the Seller which implies either a failure to consider any serious risk that a conscientious supplier would

normally have foreseen as likely to occur, or a deliberate neglect of any risk deriving from such act or omission.

- 8.12 The validity of the Warranty hereto referred is subject to activation on the website [www.cuppone.com](http://www.cuppone.com) within 48 hours after the time the Product is installed.

## Spare parts

- 9.1 Until and within 10 years as of the delivery of the Product, the Seller undertakes to assist the Buyer in identifying the spare parts for the maintenance of the Product (if it is so requested by the Buyer). In any case, the Seller is in no way responsible for the failure to identify such sources.

## Applicable law and multi-step clause

- 11.1 The Italian law, as the law of the Seller, shall govern the sale under the present Terms and Conditions of sale.
- 11.2 Both the Seller and the Buyer exclude the application of the Vienna Convention.
- 11.3 The parties shall defer the disputes arising out of the present contract to a mediation attempt managed by the Service of Mediation of the Chamber of Arbitration of Milan.
- If the mediation attempt fails, all disputes - included those of not contractual nature - arising out of, related or connected to the present General Conditions of Sale shall be settled by arbitration under the Rules of the Chamber of Arbitration of Milan (the Rules), by a sole arbitrator / three arbitrators, appointed in accordance with the Rules, which are deemed to be incorporated by reference into this clause. The Arbitral Tribunal will judge according to the Italian law. The seat of the arbitration will be in Milan (Italy). The language of the arbitration will be Italian.

# Something is not working...

## What to do in case of any faults

- Note the hood data (rating plate) and the date and number of the appliance purchase invoice.

Serial number.....

Model.....

Invoice date.....

Invoice number .....

- Read the chapter on warranty carefully.



**Warranty** - page **41**.

- Call the Dealer communicating the hood data. Waiting for the intervention of the Technical Service.

### CUPPONE 1963

Cuppone F.lli S.r.l.

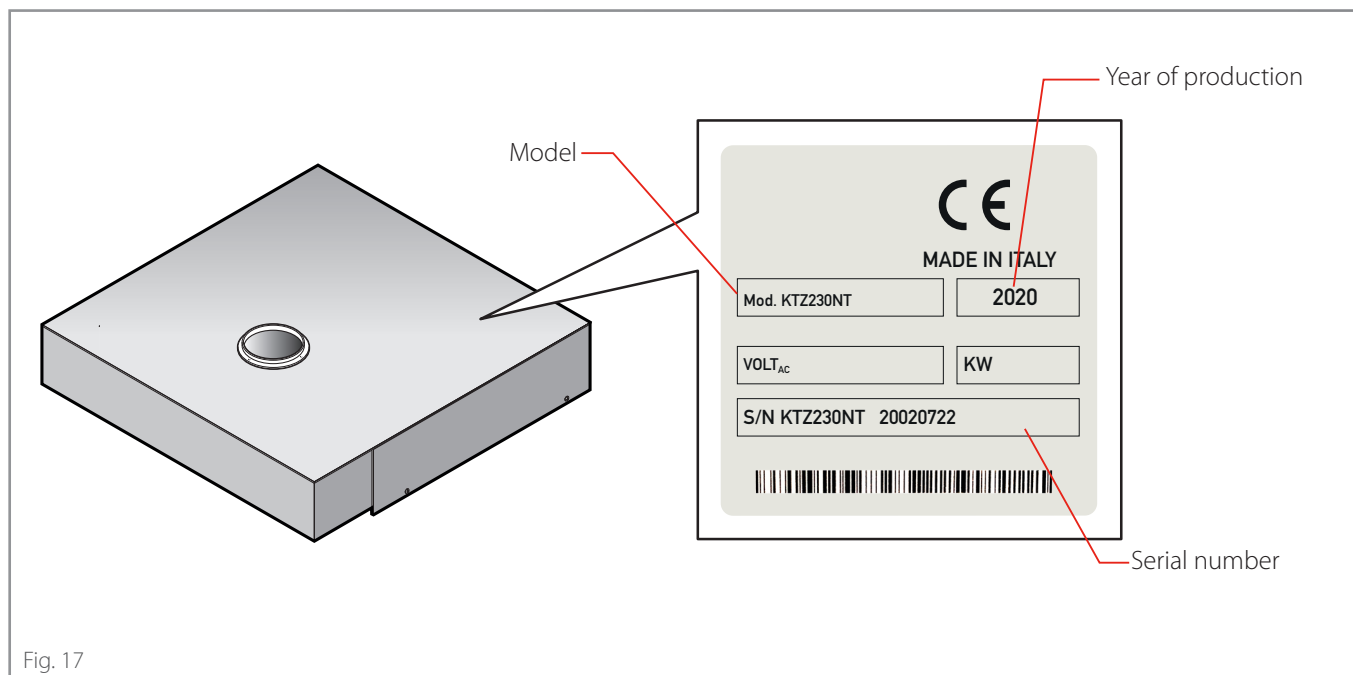
Via Sile, 36

31057 Silea (TV) - ITALY

T +39 0422 361143

F +39 0422 360993

info@cuppone.com - www.cuppone.com





## CUPPONE 1963

Cuppone F.lli S.r.l.

Via Sile, 36

31057 Silea (TV) - ITALY

T +39 0422 361143

F +39 0422 360993

info@cuppone.com - [www.cuppone.com](http://www.cuppone.com)

