

# Giotto

## HOOD

Use and maintenance manual

KG7





We congratulate you for choosing a product designed and manufactured with cutting-edge technology.

Before delivery to the customer, the hood is checked and tested in the Manufacturer's factories.

The "production process check sheet" enclosed with it guarantees that **each** step in the production process, from assembly to packaging, was carefully checked from both the operating and safety standpoints.

Before the installation, read the content of this manual **carefully**: it contains important information regarding product assembly and safety regulations.

## The foundation

Our company was founded in 1963 by the Lorenzo, Luigi and Paolo Cuppone brothers. It immediately specialized in the production of ovens and equipment for preparing and cooking pizza.

The constant research and experimentation of new equipment that are even now the strength of our company, have led us to design and patent the machinery and ovens that have revolutionized the way pizza is made.

## Technical service

Your Dealer can solve any technical problem regarding use and maintenance.

Do not hesitate to contact him in case of doubt.

CUPPONE 1963  
Cuppone F.Illi S.r.l.  
Via Sile, 36  
31057 Silea (TV) - ITALY  
T +39 0422 361143  
F +39 0422 360993  
info@cuppone.com - www.cuppone.com

<b>Introduction .....</b>	<b>3</b>
Technical service.....	3
<b>Contents .....</b>	<b>3</b>
<b>Safety instructions .....</b>	<b>4</b>
Symbols used in the manual and on the labels applied to the machine.....	5
<b>Basic notions .....</b>	<b>6</b>
Knowing the hood .....	6
Preparing to use the hood .....	6
<b>Hood use .....</b>	<b>7</b>
How to use the hood.....	7
<b>Maintenance and cleaning .....</b>	<b>8</b>
Warnings.....	8
Hood cleaning .....	8
Hood downtime for prolonged periods.....	8
Replacing components.....	9
Disposal at end of life .....	10
<b>Warranty.....</b>	<b>11</b>
<b>Something is not working.....</b>	<b>12</b>
What to do in case of any malfunction .....	12
<b>Notes.....</b>	<b>13</b>

# Safety instructions

- Read this guide carefully before using and maintaining the appliance, and keep it with care in an accessible place for any future consultation by the various operators.
  - Moreover, the manual must always accompany the product through its life, even in case of transfer.
  - Before performing any maintenance, disconnect the electricity supply.
  - Unauthorised actions, tampering or modifications that do not follow the information provided in this manual can cause damages, injuries or fatal accidents and null and void the warranty.
  - Use or maintenance that fail to comply with the instructions in this manual may cause damage, injury or fatal accidents.
  - The rating plate provides important technical information that is vital in case of a request for maintenance or repair of the appliance: please do not remove, damage or modify it.
  - Some parts of the appliance may reach high temperatures. We recommend you avoid touching surfaces and do not get materials either flammable or sensitive to heat near the appliance.
  - Do not rest objects on the hood, above all if built in material sensitive to heat. In case of a suction hood, take great care not to cover the upper ventilation slits on the control panel.
  - Do not use the hood without the front filters.
  - The appliance is a product that can only be used to evacuate vapours from the cooking chamber and from the opening of the oven door below.
- Any use other than that indicated is considered improper, potentially dangerous for people and animals and could irreparably damage the equipment. Improper use of the equipment voids the warranty.
- The device can be used by children aged 8 and under and by persons with reduced physical, sensory or mental abilities, or lacking in experience or the necessary knowledge, provided they are under surveillance and after they have received instructions relating to the safe use of the appliance and understand the dangers inherent in it. Children must not play with the appliance. Cleaning and maintenance designed to be carried out by the user must not be carried out by unsupervised children.
  - The staff using the appliance must be professionally prepared and periodically trained on its use, as well as the safety and accident prevention regulations.
  - Children must be supervised to make sure they do not play with the appliance or parts of it.
  - Periodically check the efficiency of the fume exhaust ducts. Do not obstruct the duct for any reason.
  - FIRE HAZARD: leave the area around the equipment free and clean of fuels. Do not keep flammable materials near this appliance.
  - WARNING: EXPLOSION HAZARD! It is forbidden to use the hood in potentially explosive environments.
  - Do not use the hood as an anchor or shelf for other equipment or objects.
- WARNING: always switch off the main switch when you finish using the appliance, above all during cleaning or in cases of prolonged downtime.
  - If you notice any anomaly (e.g. damaged power cable, etc.), malfunction or fault, do not use the appliance and contact your Dealer. Ask for original spare parts or the Warranty will be forfeited.
  - Place the emergency phone numbers in a visible location.
  - Failure to follow these regulations may cause damage or even fatal injury, subsequently invalidating the guarantee and relieving the Manufacturer of all liability.
  - We recommend you have the appliance checked by your Dealer at least once a year.

## Symbols used in the manual and on the labels applied to the machine



Indicates that caution is required when performing an operation described by a paragraph that contains this symbol. The symbol also indicates that maximum operator awareness is required in order to avoid unwanted or dangerous consequences



Reference to another chapter where the subject is dealt with in more detail.



Manufacturer's tip



Indicates that the surfaces marked with this symbol may be hot and must therefore be touched carefully



Dangerous voltage



The symbol identifies the terminals which, connected to each other, carry the various parts of a device or system to the same potential (not necessarily the earth potential)



Indicates that it is necessary to read carefully the paragraph marked with this symbol before installing, using and maintaining the equipment

The company cannot be held liable for any print or transcription errors, reserving the right to make changes where deemed suitable without prior notice.

Partial reproduction prohibited without the consent of the Manufacturer. The measurements provided are indicative and not binding.

The original language used to prepare this manual is English: the Manufacturer is not responsible for any translation/interpretation or print errors.

## Knowing the hood

### ► Fig. 1

Your hood is a product that can only be used for extraction of steam from the cooking chamber and by opening the oven door underneath.

There are two hood variations:

- **neutral:** they only collect steam from the oven but do not have a suction motor. They are usually connected to a pre-existent exhaust system.
- **ventilation:** they suck and eliminate the steam from the oven by a 5-speed motor controlled by a front control touch panel.

The main hood parts are:

- 1 LED
- 2 Filters
- 3 Connection tube between hood and oven for the collection of the steam from the cooking chamber
- 4 External exhaust pipe (not supplied by the Manufacturer)
- 5 Connection plug to the oven

## Preparing to use the hood

Accurately clean the hood strictly following the instructions in the specific chapter.



**Hood cleaning** - page 8.

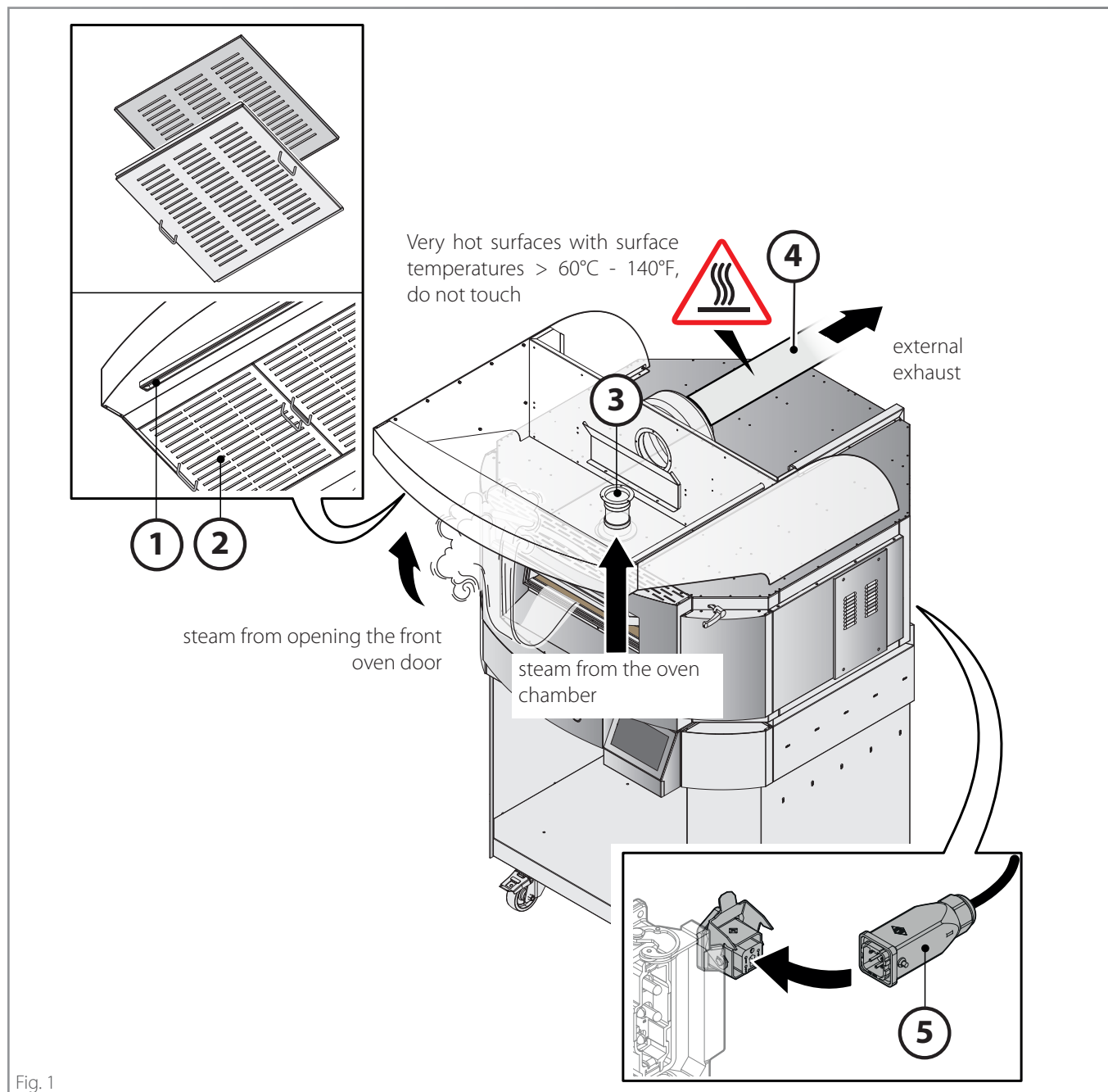


Fig. 1

## How to use the hood

The hood extracts steam from the cooking chamber and from the opening of the oven door underneath.

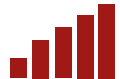
It **switches on automatically** when the oven is turned on either manually (by pressing the ON/OFF button) or automatically (with active programming).

► **Fig. 2**

The hood (speed and light on) is controlled directly from the display of the oven below.

There are 5 available speeds:

■ = minimum speed



= maximum speed



Some parts of the appliance may reach high temperatures (i.e. suction and evacuation hoses). We recommend you avoid touching surfaces and do not get materials either flammable or sensitive to heat near the appliance.

Do not rest objects on the hood, above all if built in a material sensitive to heat (**Fig. 3**).



If condensate forms on the door or oven front, the oven chamber is probably saturated with humidity; make sure the steam vent is open or increase the hood speed.

pressing the "+" or "-" button it is possible to vary the hood speed  
turns the hood light on/off

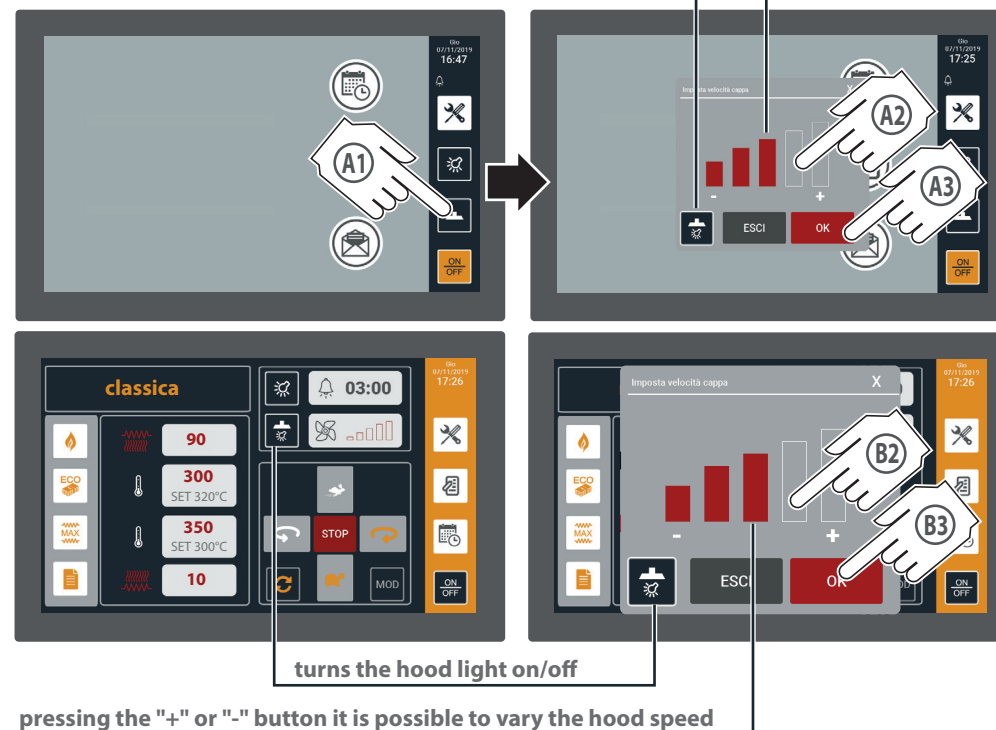


Fig. 2

Do not place objects over the hood!  
Do not hang on the hood!

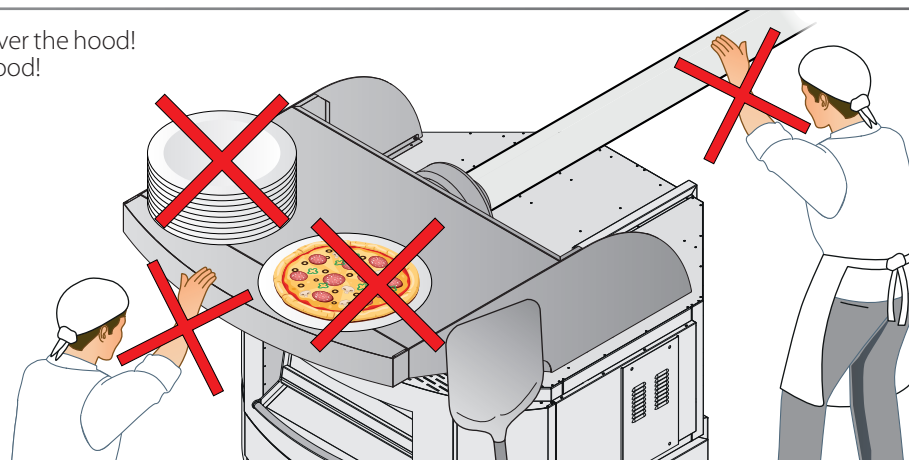



Fig. 3


## Warnings

 Before carrying out any cleaning operation, it is necessary **to disconnect the power supply** of the appliance (acting on the system switch) and wear adequate personal protection equipment (e.g. gloves, etc.). The user must only carry out routine maintenance operations, for any extraordinary maintenance contact your Dealer requesting the intervention of an authorized technician. The Manufacturer's warranty does not cover any damages deriving from poor maintenance or incorrect cleaning (e.g. use of unsuitable detergents).

 **Any cleaning must be carried out with the hood and underlying oven completely cold and wearing adequate personal protection devices (e.g. gloves, etc.).**

 When cleaning any part or accessory do NOT use:

- abrasive or powder detergents;
- aggressive or corrosive detergents (e.g. hydrochloric or sulphuric acid, caustic soda, etc.);
- abrasive or sharp tools (e.g. abrasive sponges, scrapers, steel brushes, etc.);
- steamed or pressurised water jets.

 It is best to have the Dealer perform maintenance and inspect the appliance at least once a year to ensure top working and safety conditions.

## Hood cleaning

### Cleaning the external steel parts

#### ► Fig. 4

Use a cloth dampened with hot soapy water and end with rinsing and drying.

### Lamp cleaning

Clean the lamp with a soft cloth and a little detergent for delicate surfaces. Avoid using large quantities of product as any infiltrations might cause serious damage to the components. Avoid also using very aggressive detergents that may damage the construction material.

### Filter cleaning

#### ► Fig. 5

Filters must be kept perfectly clean: cleaning frequency depends on oven use and the types of products cooked. As illustrated, periodically remove them, clean them with hot soapy water, rinse and accurately dry them before reassembling them in their housings. Alternatively you can wash them in the dishwasher and replace them only when perfectly dry.

 Do not use the hood without the filters.

## Hood downtime for prolonged periods

When the product is not in operation, disconnect it from the mains. Protect the steel outside surfaces passing over them with a soft cloth slightly damp with Vaseline oil.

Before resuming operations:

- accurately clean the equipment;
- reconnect the equipment to the power;
- inspect the equipment before using it.

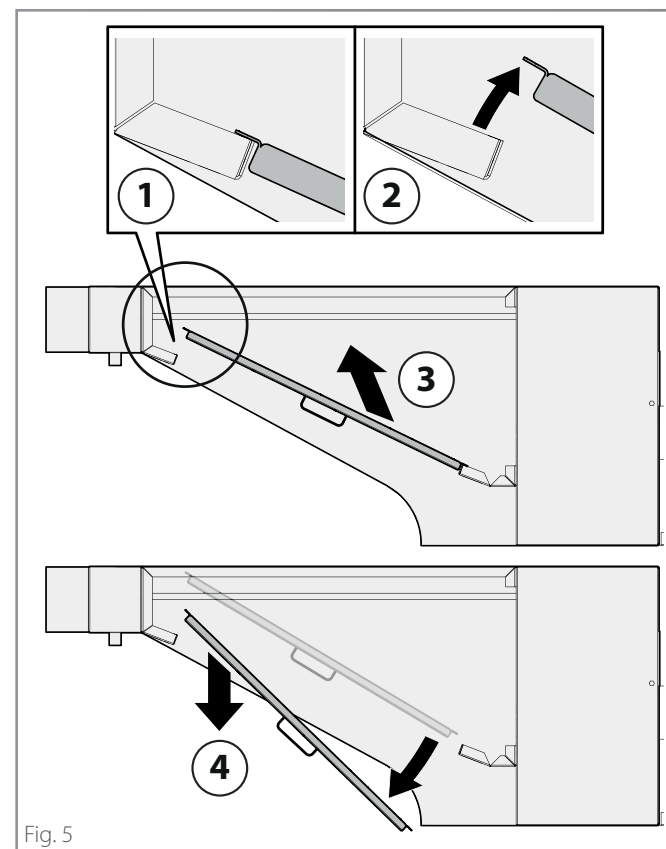


Fig. 5



## Replacing components

⚠ The user must **only** replace the components indicated: in the event of a fault or extraordinary maintenance, contact your Dealer requesting the intervention of an authorized technician. For replacements always use original spare parts to be requested from your Dealer: using non-original spare parts might cause non-optimal performance of the equipment and serious damage to persons and to the equipment itself not covered by the warranty.

⚠ Before any replacement, it is necessary to **switch off the power** to the appliance (acting on the system switch) and wear suitable personal protection equipment (e.g. gloves, etc.).

⚠ **Any component should be replaced with the hood and underlying oven completely cold and wearing adequate personal protection devices (e.g. gloves, etc.).**

### Suction/exhaust pipe replacement

#### ► Fig. 6 Flue

The flue **E** is not supplied by the Manufacturer as a spare part and thus must be purchased at a specialised service centre.

- ⚠ The flue **E** must:
- be exclusively used by the equipment,
  - have a **Ø150 mm [Ø5.91 in.]** (to guarantee correct draught up to a maximum of 20 linear metres [787.4 in.], three curves and a terminal on the roof),
  - be made of high temperature resistant stainless steel,
  - meet current regulations.

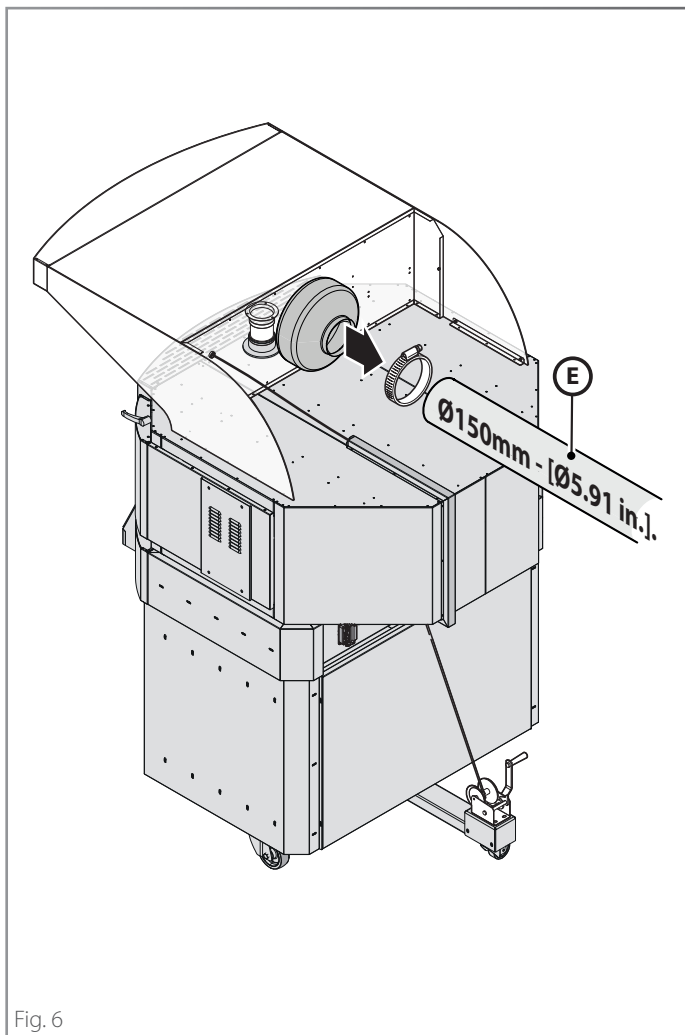


Fig. 6

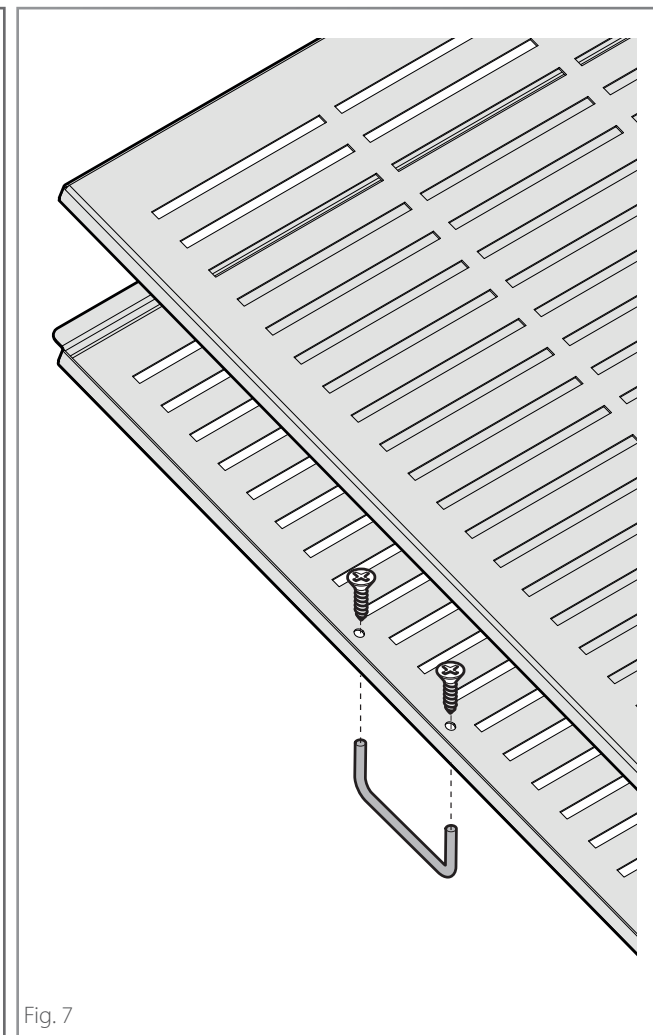


Fig. 7

### Filter and filter handle replacement

#### ► Fig. 7

## Disposal at end of life



To avoid any unauthorised use and associated risks, before discarding the machine make sure it cannot be used; for this purpose, cut and remove the power cord (once the equipment is unplugged).

## Equipment disposal



Pursuant to art. 13 of Legislative Decree No. 49 of 2014 "Implementation of WEEE Directive 2012/19/EU on electrical and electronic waste", the crossed-out wheeled bin specifies that the product entered the market after 13 August 2005 and that at the end of its useful life it must not be assimilated to other waste but must be disposed of separately. All the equipment is made of recyclable metal materials (stainless steel, iron, aluminium, galvanized sheet, copper, etc.) in a percentage higher than 90% by weight. It is necessary to pay attention to the management of this product in its end of life reducing the negative impacts on the environment and improving the effectiveness of the use of resources, applying the "polluter-pays", prevention, preparation for re-use, recycling and recovery principles. Please note that unauthorized or incorrect disposal of the product leads to the application of the penalties provided for by the current legislation.

## Information on disposal in Italy

WEEE equipment in Italy must be delivered to:

- to Collection Centres (also named eco-islands or eco-platforms)
- the dealer where new equipment is purchased who must withdraw it free of charge ("one to one" withdrawal).

## Information on disposal in European Union countries

The EU Directives on WEEE equipment has been adopted in different ways by different countries, therefore in order to dispose of this equipment correctly we suggest that you contact your local authority or your dealer in order to ask the correct method of disposal.

# Warranty

- 8.1 Each Product sold is to be considered compliant when delivered in the quantity, quality and type indicated in the written Confirmation. Please refer to the provisions of art. 1.1.
- 8.2 The Seller warranties:
  - (a) that the Products are free from defects in material and workmanship, and
  - (b) that (except in the case of defects known or to be known by the Buyer) the Products are of merchantable quality.
- 8.3 Any hidden defects of the Products must be reported in writing by the Buyer within 8 days of discovery, under penalty of forfeiture. Packaging defects are excluded - even if they have caused defects or damage to the internal Products; in fact, packaging defects have to be reported at the time of delivery, pursuant to art. 5.8 of the present General Conditions of Sale.
- Written notices by the Buyer for the Products defective shall contain a full description of the defects and faults as well as the mention of the delivery date and that of defect discovery of the Products.
- Warranty is excluded if the defect derives from the Buyer's actions, such as (and not limited to) incorrect installation of the Product, use of the Product in a manner that does not comply with the normal method of use, failure to comply with the instructions contained in the "user and installation manual", tampering with the Product. Warranty does not cover normal wear and tear of the Product due to use.
- The seller is responsible for defects that occur within one year from the activation of the warranty as provided for in art. 8.12 of the present General Conditions of Sale.
- 8.4 The Seller shall have the right to examine, or have a representative examine, the defective Product and, should the existence of the defect be ascertained, the Buyer shall be entitled to repair or replacement, at the sole final decision of the Seller.
- Once the defect is reported, the Buyer must not use the Product until it is examined by the Seller or by their deputy. In case the Seller realises that the Product was used after the notification of the complaint, the Buyer loses the right to obtain replacement or repair.
- 8.5 Replacement or repair will take place under the following terms:
  - a) The Seller may repair the defective Products by going - or sending a deputy - to the place where such Products are located;
  - b) Alternatively, the Seller may repair the defective Product at its own factory, or other place chosen by the Seller;
  - c) Or alternatively, the Seller may opt for the replacement of the defective Products.
- In case the repair / replacement of the Products is not possible, the Seller will pay the Buyer a refund. Such refund shall be subjected to quantification, yet must not exceed the price paid for the Products. Any compensation for damage is excluded.
- 8.6 In case of repair of the Products at a place chosen by the Seller or in case of replacement of the defective Products, the shipment of the Product will be charged to the Buyer who must send them, at his own expense and risk, to the place indicated by the Seller.
- 8.7 In no case shall the Seller be held liable for any indirect or consequential damages and/or loss of profit that the Buyer may suffer arising out of or caused by defective or faulty Products such as (but not limited to) cancellation of orders by customers, penalties for late deliveries, forfeitures or indemnifications of whatsoever nature.
- 8.8 The Seller shall indemnify and hold the Buyer harmless from any liability or prejudices arising out of defective or faulty Products, unless the alleged liability arises from any negligent act or omission by the Buyer or any failure by the Buyer to perform its obligations.
- 8.9 The Seller shall not be liable for damage to persons and / or property that may derive from improper use of the Products and / or from any use, processing or transformation of the Products that do not comply with their intended use and / or with the instructions provided by the Seller, except the case of gross negligence or wilful misconduct by the Seller.
- The Seller will also not be liable in the event of damage to persons or property or in the case of malfunction or damage or deterioration of the Product deriving from the fact that the Product has been connected to a non-compliant electrical system.
- 8.10 The Buyer shall not be able to raise any claim for personal injury or damage to property other than those which are the subject of the contract, or for loss of profit, unless it is clear from the circumstances of the case that the Seller committed "gross negligence".
- 8.11 "Gross negligence" shall not include any and all lack of adequate care and expertise, but it is to be intended as an act or omission by the Seller which implies either a failure to consider any serious risk that a conscientious supplier would

normally have foreseen as likely to occur, or a deliberate neglect of any risk deriving from such act or omission.

- 8.12 The validity of the Warranty hereto referred is subject to activation on the website [www.cuppone.com](http://www.cuppone.com) within 48 hours after the time the Product is installed.

## Spare parts

- 9.1 Until and within 10 years as of the delivery of the Product, the Seller undertakes to assist the Buyer in identifying the spare parts for the maintenance of the Product (if it is so requested by the Buyer). In any case, the Seller is in no way responsible for the failure to identify such sources.

## Applicable law and multi-step clause

- 11.1 The Italian law, as the law of the Seller, shall govern the sale under the present Terms and Conditions of sale.
- 11.2 Both the Seller and the Buyer exclude the application of the Vienna Convention.
- 11.3 The parties shall defer the disputes arising out of the present contract to a mediation attempt managed by the Service of Mediation of the Chamber of Arbitration of Milan.
- If the mediation attempt fails, all disputes - included those of not contractual nature - arising out of, related or connected to the present General Conditions of Sale shall be settled by arbitration under the Rules of the Chamber of Arbitration of Milan (the Rules), by a sole arbitrator / three arbitrators, appointed in accordance with the Rules, which are deemed to be incorporated by reference into this clause. The Arbitral Tribunal will judge according to the Italian law. The seat of the arbitration will be in Milan (Italy). The language of the arbitration will be Italian.

# Something is not working...

## What to do in case of any malfunction

- Try and check the table on this page. If none of the proposed solutions solves the problem, continue reading the following procedure.

- Note the hood data (rating plate) and the date and number of the appliance purchase invoice.

Serial number.....

Model.....

Invoice date.....

Invoice number .....

- Read the chapter on warranty carefully.



**Warranty** - page 11.

- Call your Dealer, stating the hood data. While waiting for technical assistance, disconnect the hood from the power supply.

### CUPPONE 1963

Cuppone F.lli S.r.l.

Via Sile, 36

31057 Silea (TV) - ITALY

T +39 0422 361143

F +39 0422 360993

info@cuppone.com - www.cuppone.com

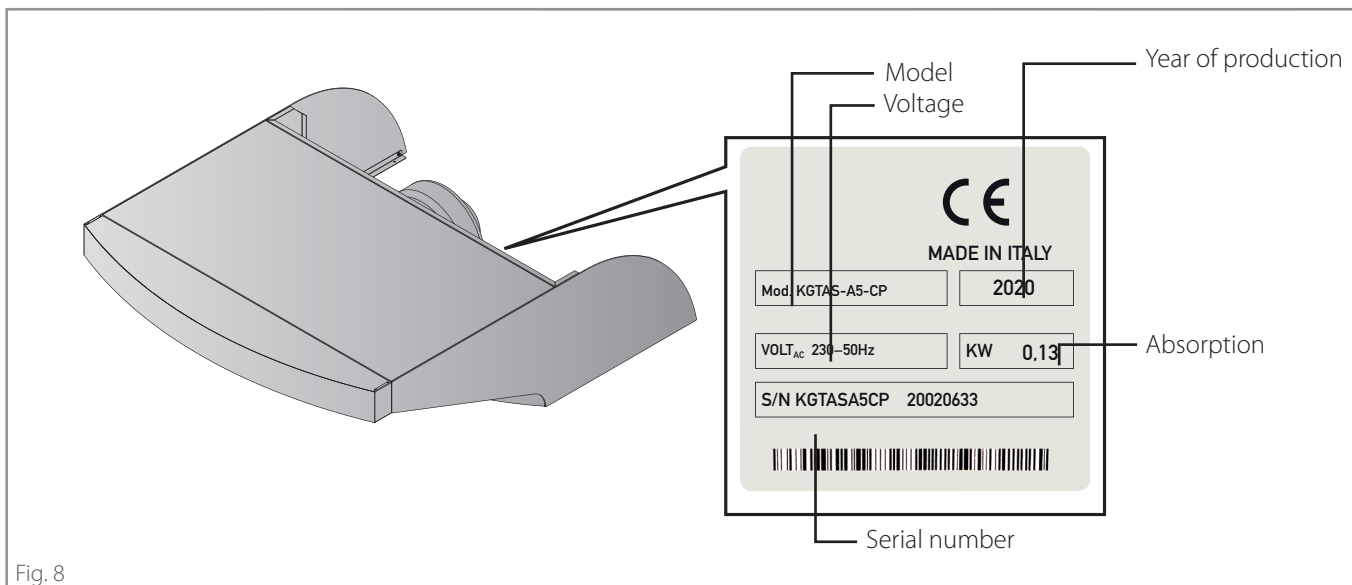


Fig. 8

Problem	Solution
The hood does not turn on	<ul style="list-style-type: none"><li>• Check that the electricity supply has not been cut off.</li><li>• Make sure the main switch is ON.</li><li>• Check that the rear connection plug to the oven has not been disconnected ► <a href="#">Fig. 1</a></li></ul>
The light does not turn on	<ul style="list-style-type: none"><li>• Check that the electricity supply has not been cut off.</li><li>• Make sure the main switch is ON.</li><li>• Check that the rear connection plug to the oven has not been disconnected ► <a href="#">Fig. 1</a></li></ul>
Excessive humidity is coming out of the oven door	<ul style="list-style-type: none"><li>• The products in the oven normally release humidity, if the oven steam vent is not correctly open and the speed set on the hood is inadequate, this steam could exit from the door. Check that the steam valve is open and try and increase the hood speed.</li></ul>



CUPPONE 1963

Cuppone F.lli S.r.l.

Via Sile, 36

31057 Silea (TV) - ITALY

T +39 0422 361143

F +39 0422 360993

info@cuppone.com - www.cuppone.com

