

Leonardo

STEAMER

Installation use and
maintenance manual

VPR (N602870184)





We congratulate you for choosing a product designed and manufactured with cutting-edge technology.

Before delivery to the customer, the steamer is checked and tested in the Manufacturer's plant.

The "production process check sheet" enclosed with it guarantees that **each** step in the production process, from assembly to packaging, was carefully checked from both the operating and safety standpoints.

Before installation and use, read the content of this manual **carefully**: it contains important information regarding product assembly and use as well as safety regulations.

The foundation

Our company was founded in 1963 by the Lorenzo, Luigi and Paolo Cuppone brothers. It immediately specialized in the production of ovens and equipment to prepare and cook pizza. The constant research and experimentation of new equipment that are even now the strength of our company, have led us to design and patent the machinery and ovens that have revolutionized the way pizza is made.

Technical service

Your Dealer can solve any technical problem regarding use and maintenance.

Do not hesitate to contact him in case of doubt.

CUPPONE 1963
Cuppone F.lli S.r.l.
Via Sile, 36
31057 Silea (TV) - ITALY
T +39 0422 361143
F +39 0422 360993
info@cuppone.com - www.cuppone.com

SAFETY INSTRUCTIONS	4
Symbols used in the manual and on the labels applied to the machine.....	5
CHECKS BEFORE PURCHASING	6
STEAMER TECHNICAL DATA	8
INSTALLATION.....	9
USE AND MAINTENANCE	11
What this equipment is for	11
How to use the steamer	11
Maintenance and cleaning	12
Warnings.....	12
Cleaning the steamer	12
Steamer downtime for prolonged periods.....	12
Disposal at end of life	12
Warranty conditions.....	13
Something is not working.....	14
What to do in case of any malfunction	14

1 SAFETY INSTRUCTIONS

- Read this guide carefully before installing, using and maintaining the appliance, and keep it with care in an accessible place for any future consultation by the various operators.
- Moreover, the manual must always accompany the product through its life, even in case of transfer.
- Before any movement or installation, check that the room is suitable and systems comply with the installation country standards and the specifications indicated on the appliance rating plate.
- All installation, assembly and non-routine maintenance operations must be performed exclusively by qualified technicians that are authorised by the Dealer, in compliance with the regulations in force in the user country, and with the regulations on systems and work safety.
- Before performing any installation or maintenance, disconnect the power supply and make sure it is at room temperature.
- Unauthorised actions, tampering or modifications that do not follow the information provided in this manual can cause damages, injuries or fatal accidents and null and void the warranty.
- Use or maintenance that fail to comply with the instructions in this manual may cause damage, injury or fatal accidents.
- The serial plate provides important technical information. This is vital in case of a request for maintenance or repair of the equipment: please do not remove, damage or modify it.
- Some parts of the equipment can reach high temperatures. We advise you to avoid touching surfaces and not to get materials either flammable or sensitive to heat near the appliance.
- Do not rest objects on the steamer, above all if built in material sensitive to heat. Do not use the steamer as an anchor to other objects.
- The appliance is a product that can only be used for the emission of steam inside the oven to which it is connected. The steamer was designed exclusively for use with water; different types of liquids can cause irreparable damage, not recognized under warranty, thus reducing the life span. A use other than the stated one is considered improper, potentially dangerous for people and animals and might permanently damage the appliance. The improper use of the equipment shall void the warranty.
- This appliance can be used by children aged from 8 years and above and persons with reduced physical, sensory or mental capabilities or lack of experience and knowledge if they have been given supervision and instruction concerning use of the appliance in a safe way and understand the hazard involved. Children must not play with the appliance. Cleaning and user maintenance shall not be made by children without supervision.
- The staff using the appliance must be professionally prepared and periodically trained on its use, as well as the safety and accident prevention regulations.
- Children must be supervised to make sure they do not play with the appliance or parts of it.
- FIRE RISK: leave the area around the appliance free and clean from fuels. Do not store flammable materials near this appliance.
- Do not use the steamer as an anchor or shelf for other equipment or objects.
- WARNING: always switch off the main switch when you finish using the appliance, above all during cleaning or in cases of prolonged downtime.
- If you notice any anomaly (e.g. damaged power cable, etc.), malfunction or fault, do not use the appliance and contact the Dealer. Demand original spare parts, or the Warranty will be null and void.
- Place the emergency phone numbers in a visible location.
- Failure to follow these regulations may cause damage or even fatal injury, subsequently invalidating the guarantee and relieving the Manufacturer of all liability.
- We recommend you have the appliance checked by your Dealer at least once a year.
- Water and waste piping and connections shall comply with the ICC International Plumbing Code 2003,11 or to the IAPMO Uniform Plumbing Code 2003.
- CAUTION. The equipment is to be installed with adequate backflow protection to comply with applicable federal, state, and local codes.

Symbols used in the manual and on the labels applied to the machine



Indicates that caution is required when performing an operation described in a paragraph that bears this symbol. The symbol also indicates that maximum operator awareness is required in order to avoid unwanted or dangerous consequences



Reference to another chapter where the subject is dealt with in more detail.



Manufacturer's tip



Indicates that the surfaces marked with this symbol may be hot and must therefore be touched carefully



Dangerous voltage



The symbol identifies the terminals which, connected to each other, carry the various parts of a device or system to the same potential (not necessarily the earth potential)



Indicates that it is necessary to read carefully the paragraph marked with this symbol before installing, using and maintaining the equipment

The company cannot be held liable for any print or transcription errors, reserving the right to make changes where deemed suitable without prior notice.

Partial reproduction without the Manufacturer's consent is prohibited. Measurements are purely indicative and not binding.

The original language used to prepare this manual is English: the Manufacturer is not responsible for any translation/interpretation or print errors.

2 CHECKS BEFORE PURCHASING

Before purchasing the steamer and installing it, check the following conditions, necessary for the correct installation, operation and maintenance of the steamer.

A	Transport (Owner's inspection)
✓	Make sure that, on the day when you receive the steamer or it is installed:
	<ul style="list-style-type: none"> lifting equipment is available that can handle the appliance safely (check weight and dimensions in the following pages), together with staff qualified to carry out this operation;
	<ul style="list-style-type: none"> personal protection equipment is available (e.g. safety shoes, gloves, etc.)

B	Oven it can be fitted to
	<p>The steamer can only be connected to the following versions of the Leonardo oven:</p> <ul style="list-style-type: none"> • LN2T/1TS-B6-US - LN2T/1TSH-B6-US • LN3T/1TS-B6-US - LN3T/1TSH-B6-US • LN650/1TS-B6-US

C	Electrical connection
	<ul style="list-style-type: none"> • Fig. 1 <p>The steamer does not have its own power supply (therefore it is not necessary to provide additional sockets) but connects directly to the Leonardo oven on which it is fitted with the cable already provided.</p>

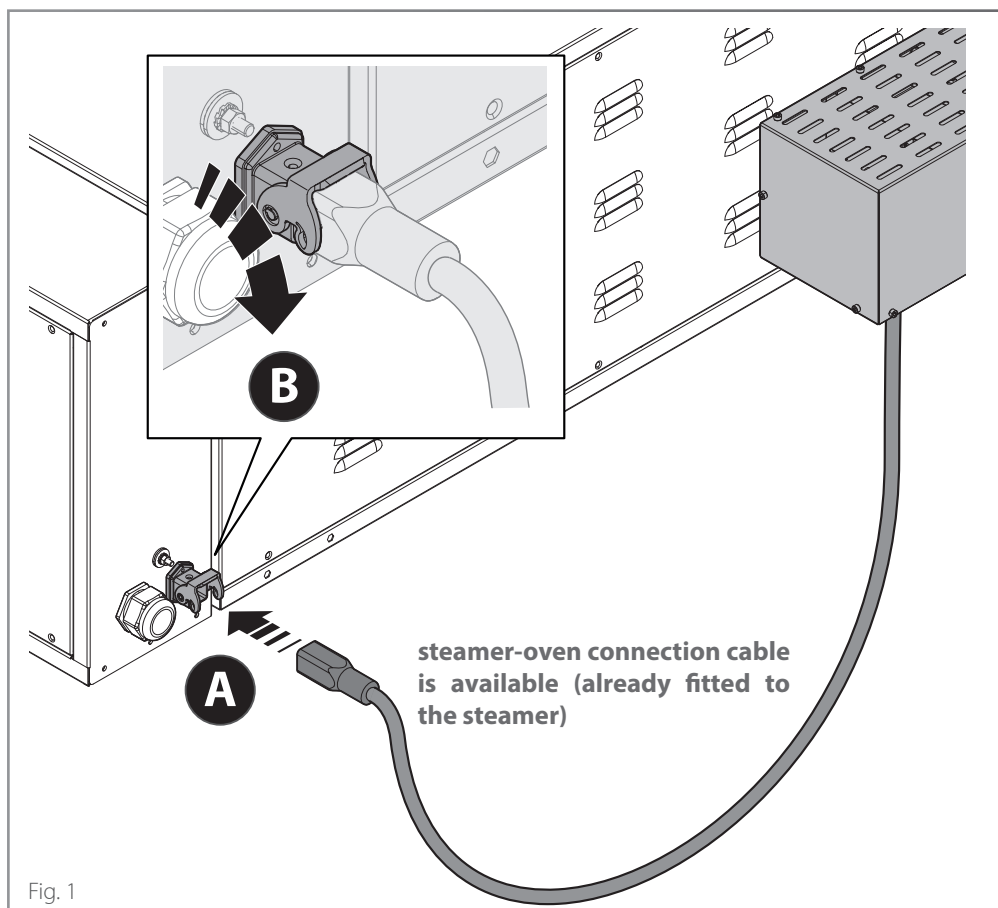


Fig. 1

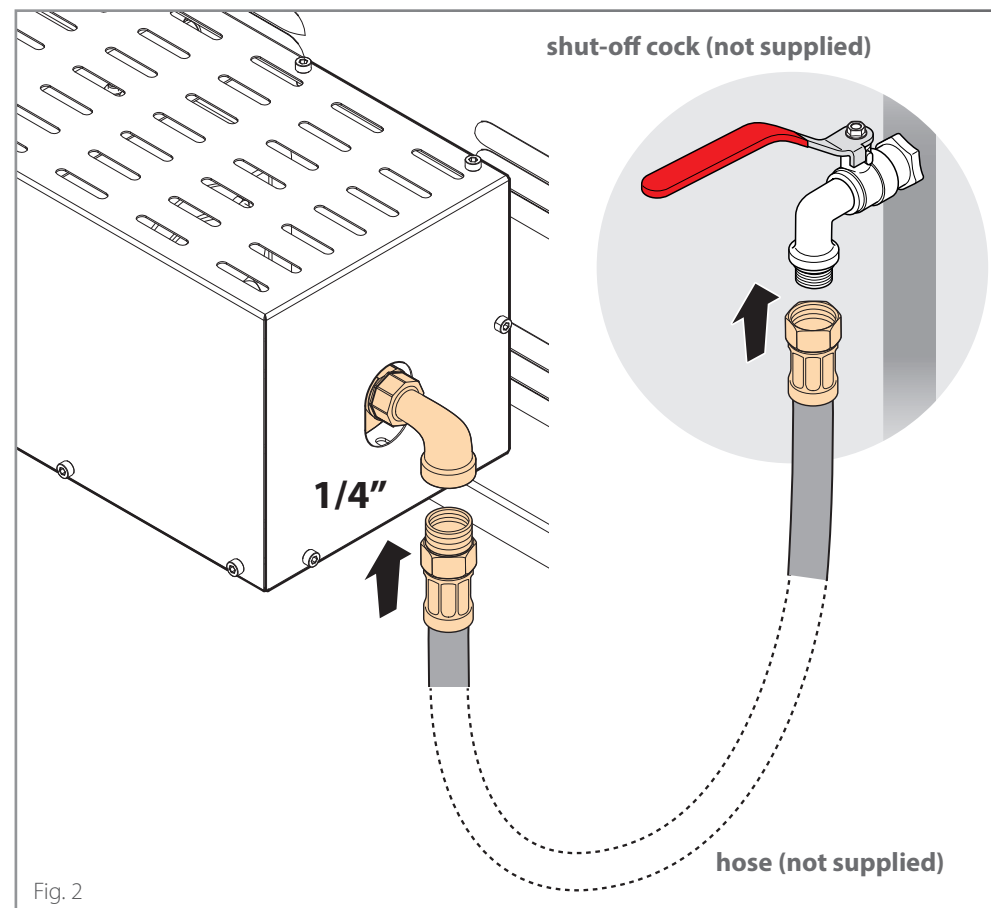


Fig. 2

D Water connection (qualified plumber's inspection)

► Fig. 2

The steamer requires a permanent connection to the water supply by means of a 1/4" connector on the back of the same. The steamer is equipped with a **flow reducer** and a **Y filter** with a 300 micron filter mesh on the water loading circuit (both are located inside the steamer and therefore are not visible from the outside).

To avoid corrosion and limescale phenomena, the incoming water must have the following chemical/physical characteristics:

- have a maximum temperature of **30°C**;
- be **drinkable**;
- have a pressure value between 150 and 600 kPa (200 kPa recommended). If the inlet water pressure is lower than the specified minimum value (150 kPa), a pump must be installed (minimum flow rate: 300 l/h);
- have 1000 µS/cm maximum water conductivity;
- Free chlorine ≤ 0.1 ppm
- Chloramines ≤ 0.1 ppm (mg / L)
- TDS ≤ 125 ppm
- Silica ≤ 12 ppm
- pH 7 ÷ 8.5
- Total hardness (TH) ≤ 6 °dH
- Chlorides ≤ 25 ppm
- Alkalinity ≤ 150 mg/L as CaCO₃

If the water values differ from those listed above, it is necessary to adequately treat the incoming water to bring the values within the limits indicated for each circuit.

It is advisable to install an **shut-off cock (not supplied)** between the water mains and the steamer.

For the connection to the water mains, a new hose (not supplied) must be used; the hoses already used must not be reused.

FINAL SITUATION AFTER ASSEMBLY

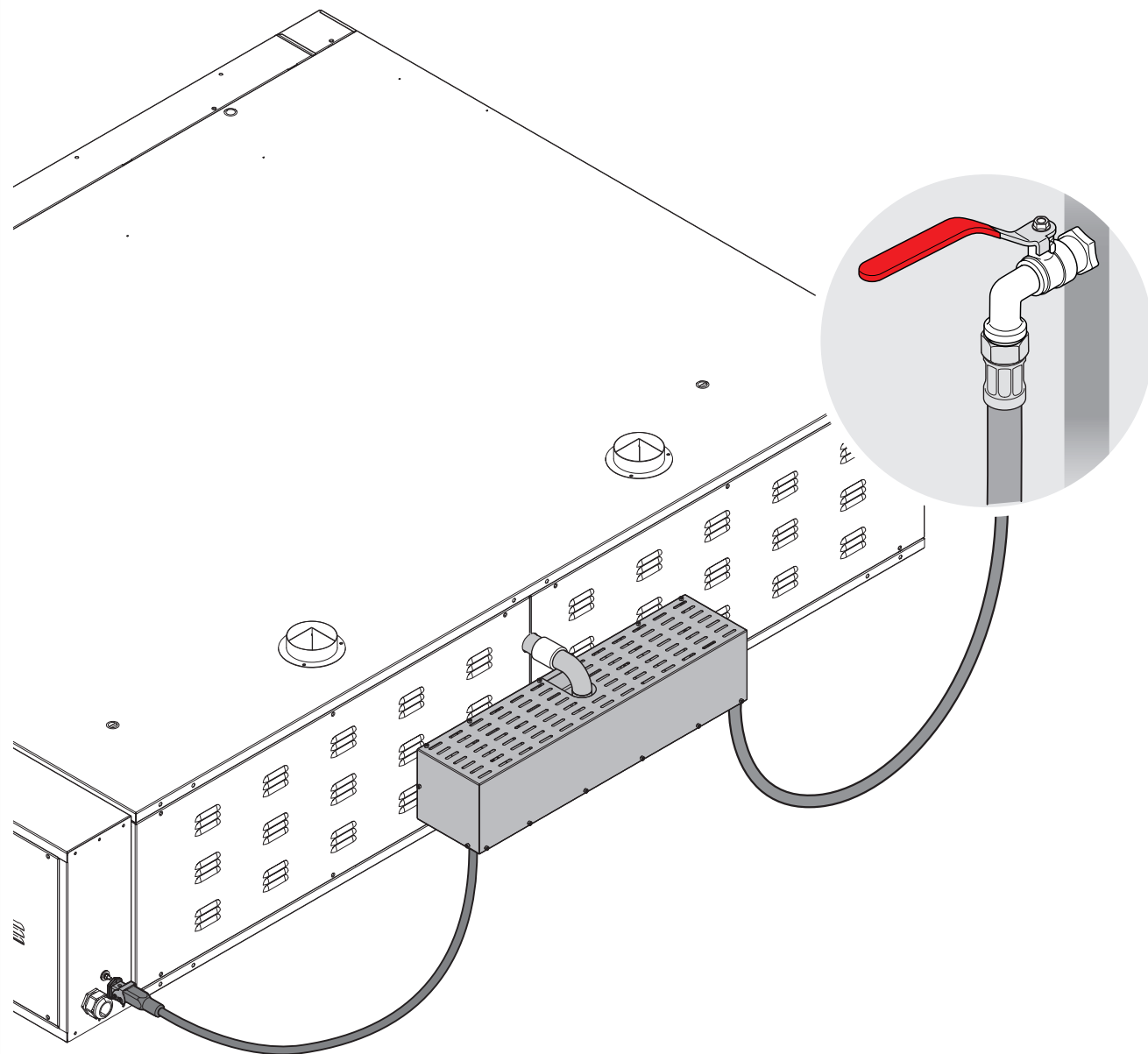
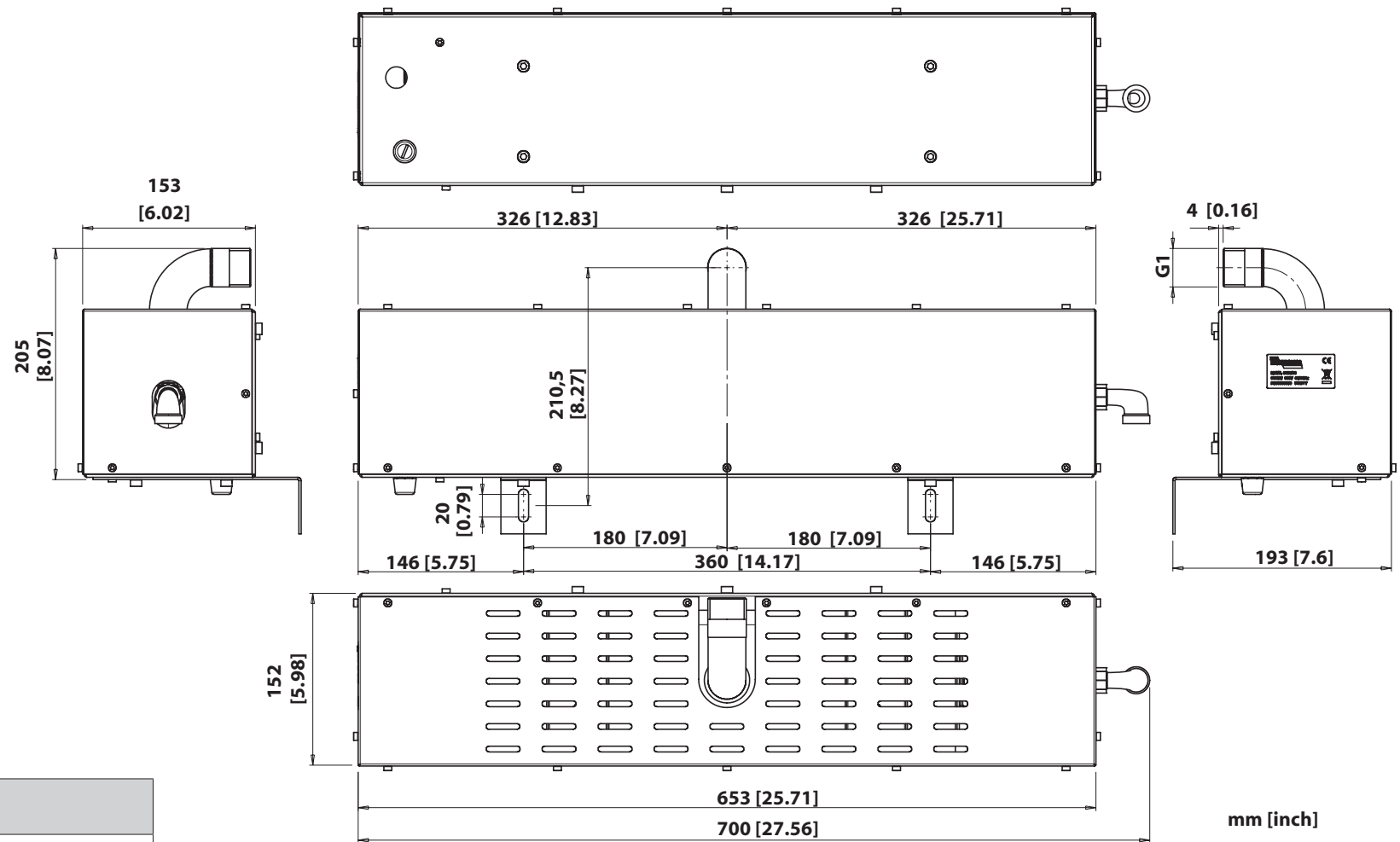
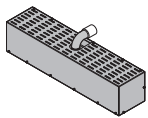
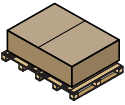


Fig. 3

3 STEAMER TECHNICAL DATA



	Units of measurement	
Power supply (50/60 Hz)	Volt	AC 230V AC 208V
Maximum absorption	W max	1500W 1227W
Connection cable to the oven	Installed cable type: 17/4 UL AWM Style 3644 + Thermocouple cables type T-T-S (0-400°C)	
	Installed cable section: 5 silicone cables 1 mm ²	
Water connection	inch	1/4"

model	
	12 kg - 26,4 lb
	75 x 22 x 29 cm (length x height x width) [29.5 x 8.66 x 11.42 in.] 14 kg - 30,8 lb

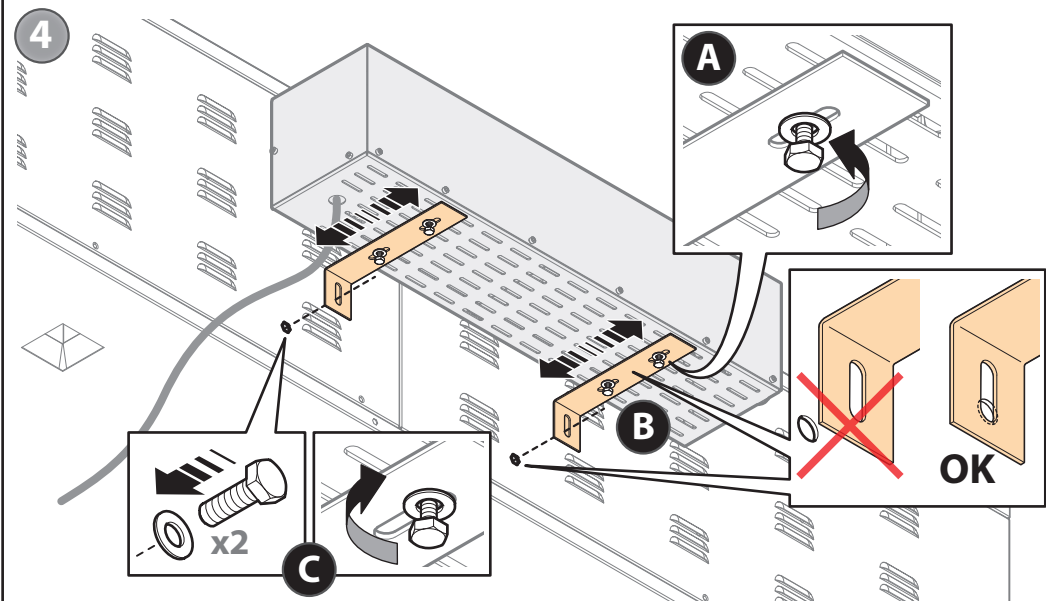
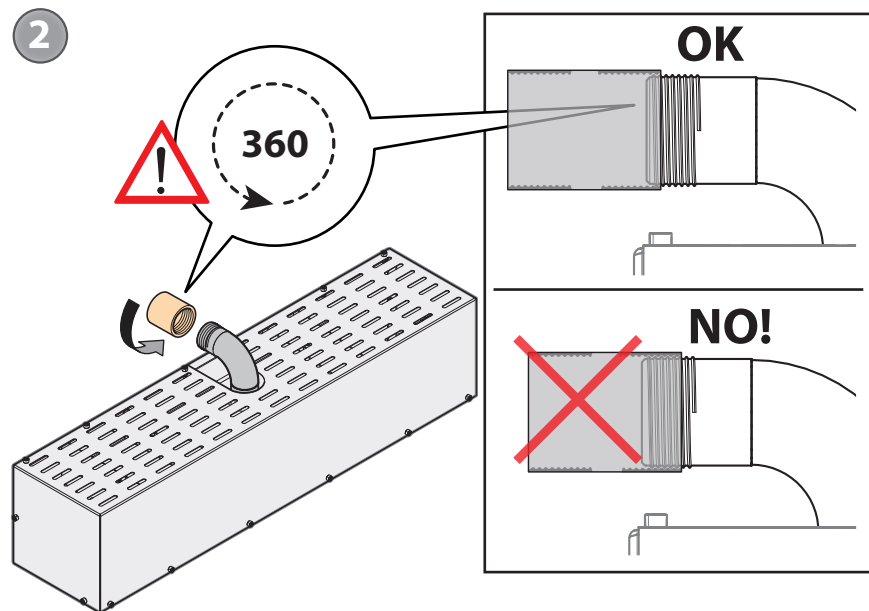
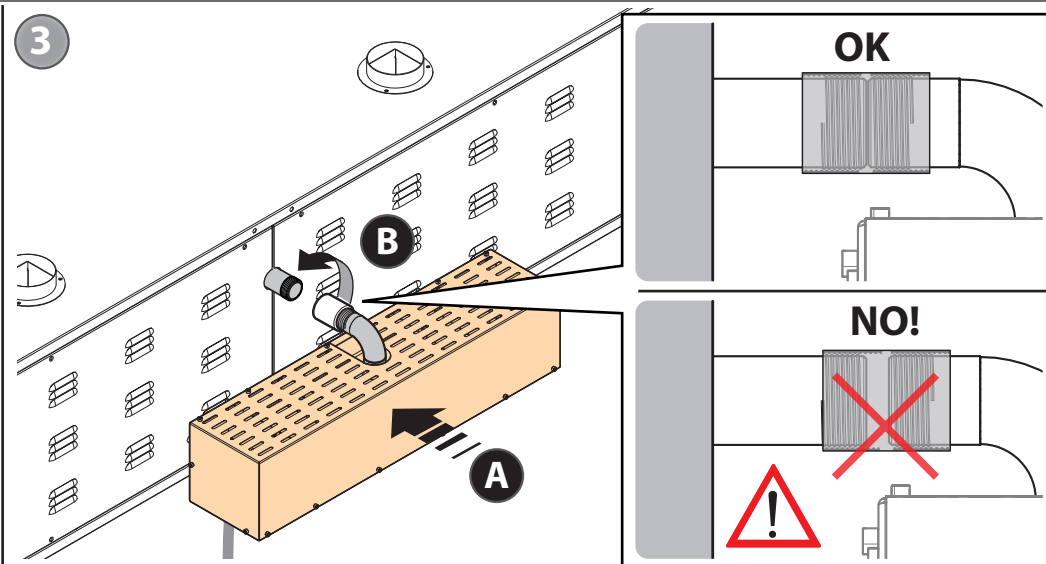
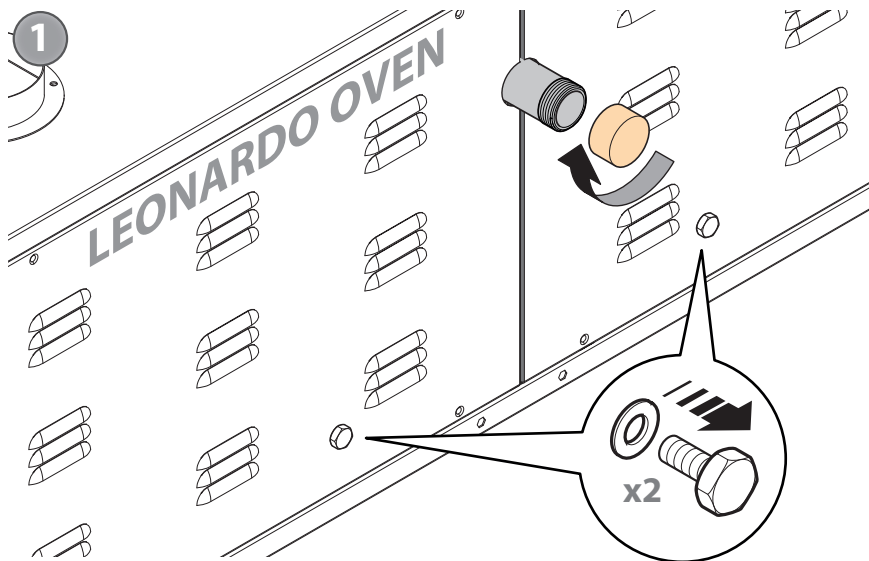
4 INSTALLATION

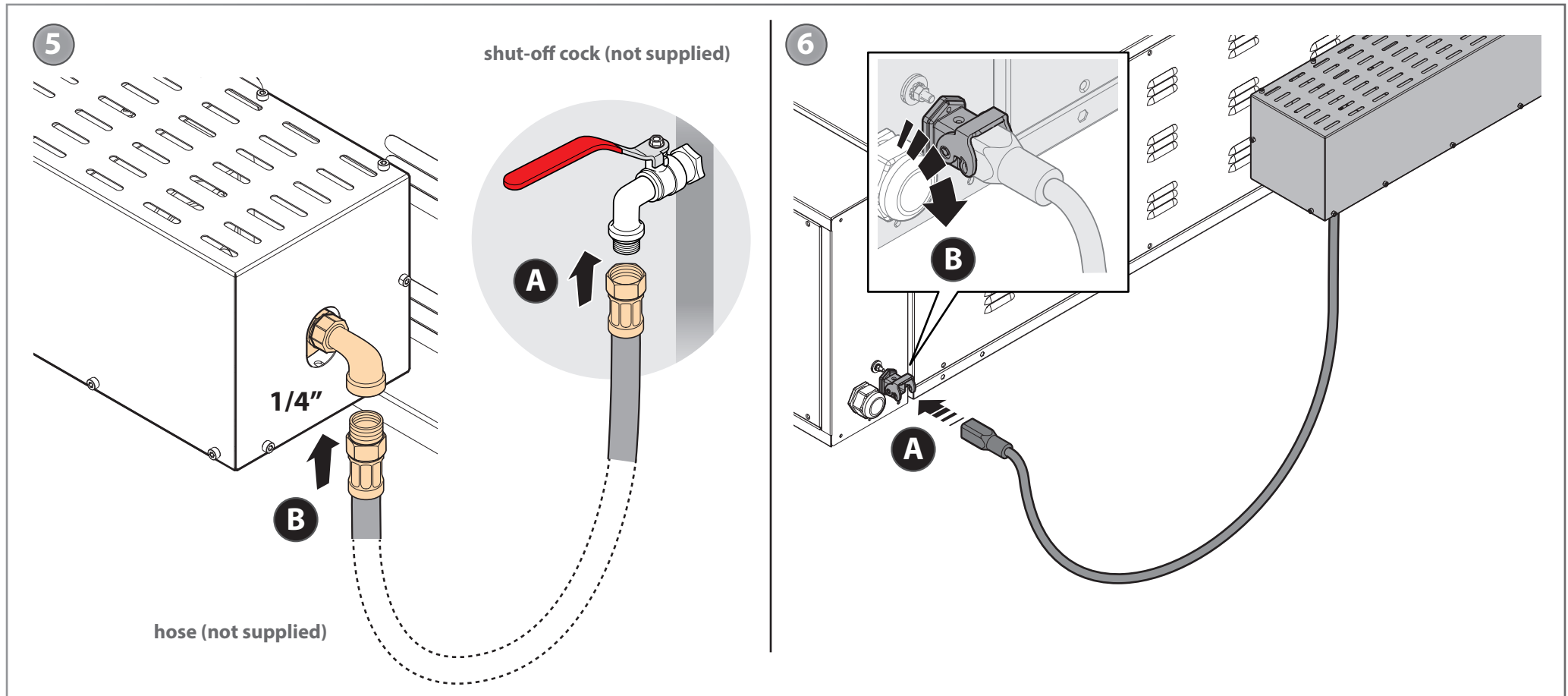


13



WARNING! DISCONNECT THE OVEN FROM THE MAINS BEFORE INSTALLING THE STEAMER





It is advisable to install an **shut-off cock (not supplied)** between the water mains and the steamer.

For the connection to the water mains, a new hose (not supplied) must be used; the hoses already used must not be reused.

After connecting the hose to the water connection (A) and before connecting it to the steamer (B), drain the water to eliminate any residues that could be found in the system.

What this equipment is for

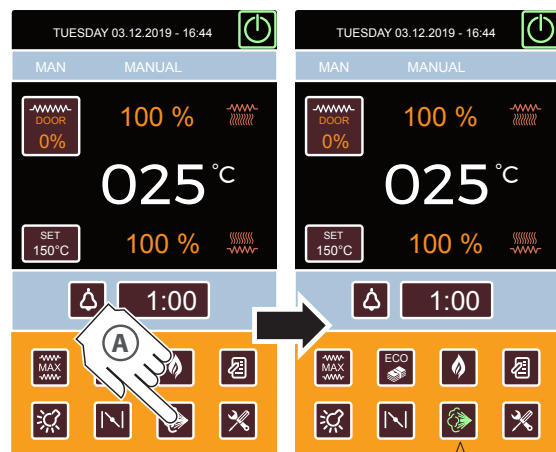
The steamer is an appliance capable of emitting steam inside the Leonardo oven to which it is connected.

The steamer was designed exclusively for use with water; different types of liquids can cause irreparable damage, not recognized under warranty, thus reducing the life span.

How to use the steamer

► Fig. 4

- **A** Activate the steamer by pressing the power button on the control panel of the Leonardo oven to which it is connected, the steamer does not have its own controls.
- **B** The steamer starts to preheat; the first time it is switched on, preheating will take approximately 10 minutes. In this phase, the "STEAMER" icon is RED to indicate that the steamer cannot be used yet.
- When the steamer reaches the temperature of use, the "STEAMER" icon turns GREEN and **it will be possible to insert steam into the cooking chamber either manually or automatically**, using the Touch control panel of the Leonardo oven to which it is connected. For the use of the Touch panel, see the dedicated chapter "Using the steamer (if provided)" in the Leonardo oven manual.
- After injecting steam into the chamber, **it takes a while for the steamer to return to temperature**; during this interval the "STEAMER" icon turns RED, this means that it is heating the water again and therefore CANNOT be used until the icon turns GREEN again. Recovery time depends on the quantity of steam injected into the chamber, the maximum time is about 15 minutes.



If the icon is **green** the steamer can be used.

B

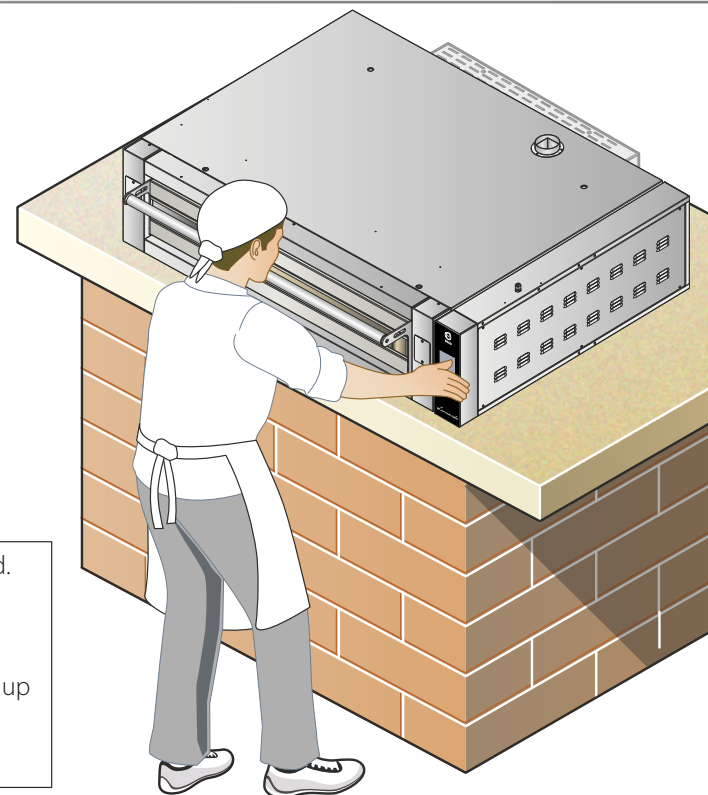


If the icon is **red**, the steamer is warming up and cannot be used yet.


Fig. 4





The temperature of the steamer is controlled by a temperature probe. If for any reason the probe does not work, the steamer is equipped with a manual reset safety thermostat on the back which will intervene by removing power from the elements. IT IS ABSOLUTELY FORBIDDEN TO BLOCK THE SAFETY THERMOSTAT RESET BUTTON WITH ANY MEANS. If for any reason the capillary of the thermostat breaks and oil leaks out, the safety thermostat will intervene and can no longer be reset.




Warnings

 Before any cleaning, it is necessary to **switch off the power** to the Leonardo oven it is connected to (acting on the system switch) and wear suitable personal protection equipment (e.g. gloves, etc.). The user must carry out only routine maintenance, for extraordinary maintenance, contact the Dealer requesting service from an authorised technician. The Manufacturer warranty does not cover damages due to negligent or incorrect maintenance or cleaning (e.g. use of unsuitable detergents).

 **Any cleaning must be carried out with the steamer and underlying oven completely cold and wearing adequate personal protection devices (e.g. gloves, etc.).**

 When cleaning any part or accessory do NOT use:

- abrasive or powder detergents;
- aggressive or corrosive detergents (e.g. hydrochloric or sulphuric acid, caustic soda, etc.);
- abrasive or sharp tools (e.g. abrasive sponges, scrapers, steel brushes, etc.);
- steamed or pressurised water jets.

 It is best to have an authorized service centre perform maintenance and inspection on the appliance at least once a year to ensure top working and safety conditions.

Cleaning the steamer

Cleaning the external steel parts

► Fig. 5

Use a cloth dampened with hot soapy water and end with rinsing and drying.


Steamer downtime for prolonged periods

During any downtime, switch the power off. Protect the steel outside surfaces passing over them with a soft cloth slightly damp with Vaseline oil.

Before resuming operations:

- accurately clean the equipment;
- reconnect the equipment to the power;
- inspect the equipment before using it.

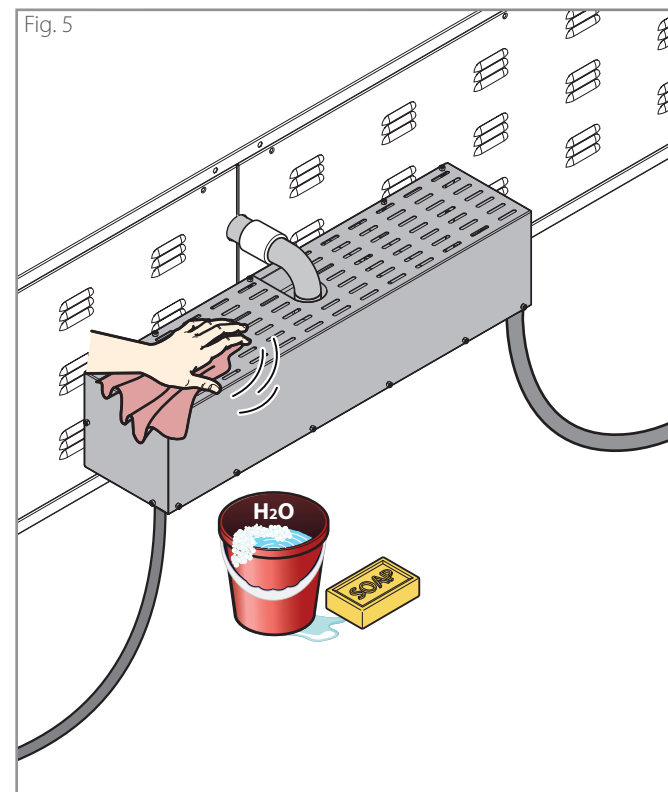
Disposal at end of life

 To avoid any unauthorised use and associated risks, before discarding the machine make sure it cannot be used; for this purpose, cut and remove the power cord (once the equipment is unplugged).

Equipment disposal



Pursuant to art. 13 of Legislative Decree no. 49 of 2014 "Implementation of WEEE directive 2012/19/EU on electric and electronic waste", the barred bin symbol specifies that the product was introduced on the market after August 13, 2005 and that it must not be discarded with other waste at the end of its working life but disposed of separately. All the equipment has been made with recyclable metal materials (stainless steel, iron, aluminium, zinc plate, copper, etc.) that as a percentage make up more than 90% of the weight. Attention must be paid to the management of this product at the end of its life, reducing any negative impact on the environment and improving the efficiency of resources, applying the principles of "who pollutes pays", prevention, preparation for re-use, recycling and recovery. Please remember that illicit or incorrect product disposal is punishable by law.



Information on disposal in European Union countries

The EU Directives on WEEE equipment has been adopted in different ways by different countries, therefore in order to dispose of this equipment correctly we suggest that you contact your local authority or your dealer in order to ask the correct method of disposal.

- 8.1 Each Product sold is to be considered compliant when delivered in the quantity, quality and type indicated in the written Confirmation. Please refer to the provisions of art. 1.1.
- 8.2 The Seller warranties:
 - (a) that the Products are free from defects in material and workmanship, and
 - (b) that (except in the case of defects known or to be known by the Buyer) the Products are of merchantable quality.
- 8.3 Any hidden defects of the Products must be reported in writing by the Buyer within 8 days of discovery, under penalty of forfeiture. Packaging defects are excluded - even if they have caused defects or damage to the internal Products; in fact, packaging defects have to be reported at the time of delivery, pursuant to art. 5.8 of the present General Conditions of Sale.
- Written notices by the Buyer for the Products defective shall contain a full description of the defects and faults as well as the mention of the delivery date and that of defect discovery of the Products.
- Warranty is excluded if the defect derives from the Buyer's actions, such as (and not limited to) incorrect installation of the Product, use of the Product in a manner that does not comply with the normal method of use, failure to comply with the instructions contained in the "user and installation manual", tampering with the Product. Warranty does not cover normal wear and tear of the Product due to use.
- The seller is responsible for defects that occur within one year from the activation of the warranty as provided for in art. 8.12 of the present General Conditions of Sale.
- 8.4 The Seller shall have the right to examine, or have a representative examine, the defective Product and, should the existence of the defect be ascertained, the Buyer shall be entitled to repair or replacement, at the sole final decision of the Seller.
- Once the defect is reported, the Buyer must not use the Product until it is examined by the Seller or by their deputy. In case the Seller realises that the Product was used after the notification of the complaint, the Buyer loses the right to obtain replacement or repair.
- 8.5 Replacement or repair will take place under the following terms:
 - a) The Seller may repair the defective Products by going - or sending a deputy - to the place where such Products are located;

- b) Alternatively, the Seller may repair the defective Product at its own factory, or other place chosen by the Seller;
- c) Or alternatively, the Seller may opt for the replacement of the defective Products.
- In case the repair / replacement of the Products is not possible, the Seller will pay the Buyer a refund. Such refund shall be subjected to quantification, yet must not exceed the price paid for the Products. Any compensation for damage is excluded.
- 8.6 In case of repair of the Products at a place chosen by the Seller or in case of replacement of the defective Products, the shipment of the Product will be charged to the Buyer who must send them, at his own expense and risk, to the place indicated by the Seller.
- 8.7 In no case shall the Seller be held liable for any indirect or consequential damages and/or loss of profit that the Buyer may suffer arising out of or caused by defective or faulty Products such as (but not limited to) cancellation of orders by customers, penalties for late deliveries, forfeitures or indemnifications of whatsoever nature.
- 8.8 The Seller shall indemnify and hold the Buyer harmless from any liability or prejudices arising out of defective or faulty Products, unless the alleged liability arises from any negligent act or omission by the Buyer or any failure by the Buyer to perform its obligations.
- 8.9 The Seller shall not be liable for damage to persons and / or property that may derive from improper use of the Products and / or from any use, processing or transformation of the Products that do not comply with their intended use and / or with the instructions provided by the Seller, except the case of gross negligence or wilful misconduct by the Seller.
- The Seller will also not be liable in the event of damage to persons or property or in the case of malfunction or damage or deterioration of the Product deriving from the fact that the Product has been connected to a non-compliant electrical system.
- 8.10 The Buyer shall not be able to raise any claim for personal injury or damage to property other than those which are the subject of the contract, or for loss of profit, unless it is clear from the circumstances of the case that the Seller committed "gross negligence".
- 8.11 "Gross negligence" shall not include any and all lack of adequate care and expertise, but it is to be intended as an act or omission by the Seller which implies either a failure to consider any serious risk that a conscientious supplier would

normally have foreseen as likely to occur, or a deliberate neglect of any risk deriving from such act or omission.

- 8.12 The validity of the Warranty hereto referred is subject to activation on the website www.cuppone.com within 48 hours after the time the Product is installed.

Spare parts

- 9.1 Until and within 10 years as of the delivery of the Product, the Seller undertakes to assist the Buyer in identifying the spare parts for the maintenance of the Product (if it is so requested by the Buyer). In any case, the Seller is in no way responsible for the failure to identify such sources.

Applicable law and multi-step clause

- 11.1 The Italian law, as the law of the Seller, shall govern the sale under the present Terms and Conditions of sale.
- 11.2 Both the Seller and the Buyer exclude the application of the Vienna Convention.
- 11.3 The parties shall defer the disputes arising out of the present contract to a mediation attempt managed by the Service of Mediation of the Chamber of Arbitration of Milan.
- If the mediation attempt fails, all disputes - included those of not contractual nature - arising out of, related or connected to the present General Conditions of Sale shall be settled by arbitration under the Rules of the Chamber of Arbitration of Milan (the Rules), by a sole arbitrator / three arbitrators, appointed in accordance with the Rules, which are deemed to be incorporated by reference into this clause. The Arbitral Tribunal will judge according to the Italian law. The seat of the arbitration will be in Milan (Italy). The language of the arbitration will be Italian.

Something is not working...

What to do in case of any malfunction

Try and check the table on this page. If none of the proposed solutions solves the problem, continue reading the following procedure.

► Fig. 6

Note the steamer data (rating plate) and the date and number of the appliance purchase invoice.

Serial number.....
Model.....
Invoice date.....
Invoice number

Read the chapter on warranty carefully.



Warranty - page 13.

Call the Dealer communicating the steamer data.

► **Fig. 7** While waiting for the Technical Service intervention, disconnect the steamer from the Leonardo oven to which it is connected by removing the connection cable.

CUPPONE 1963

Cuppone F.lli S.r.l.

Via Sile, 36

31057 Silea (TV) - ITALY

T +39 0422 361143

F +39 0422 360993

info@cuppone.com - www.cuppone.com

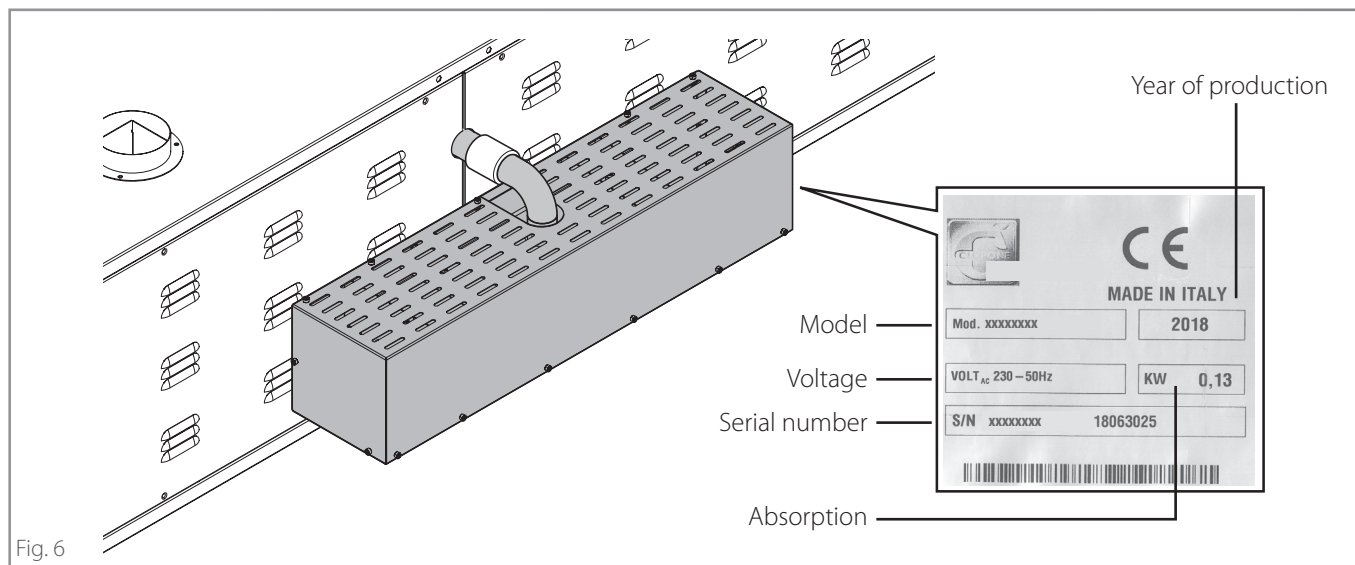


Fig. 6

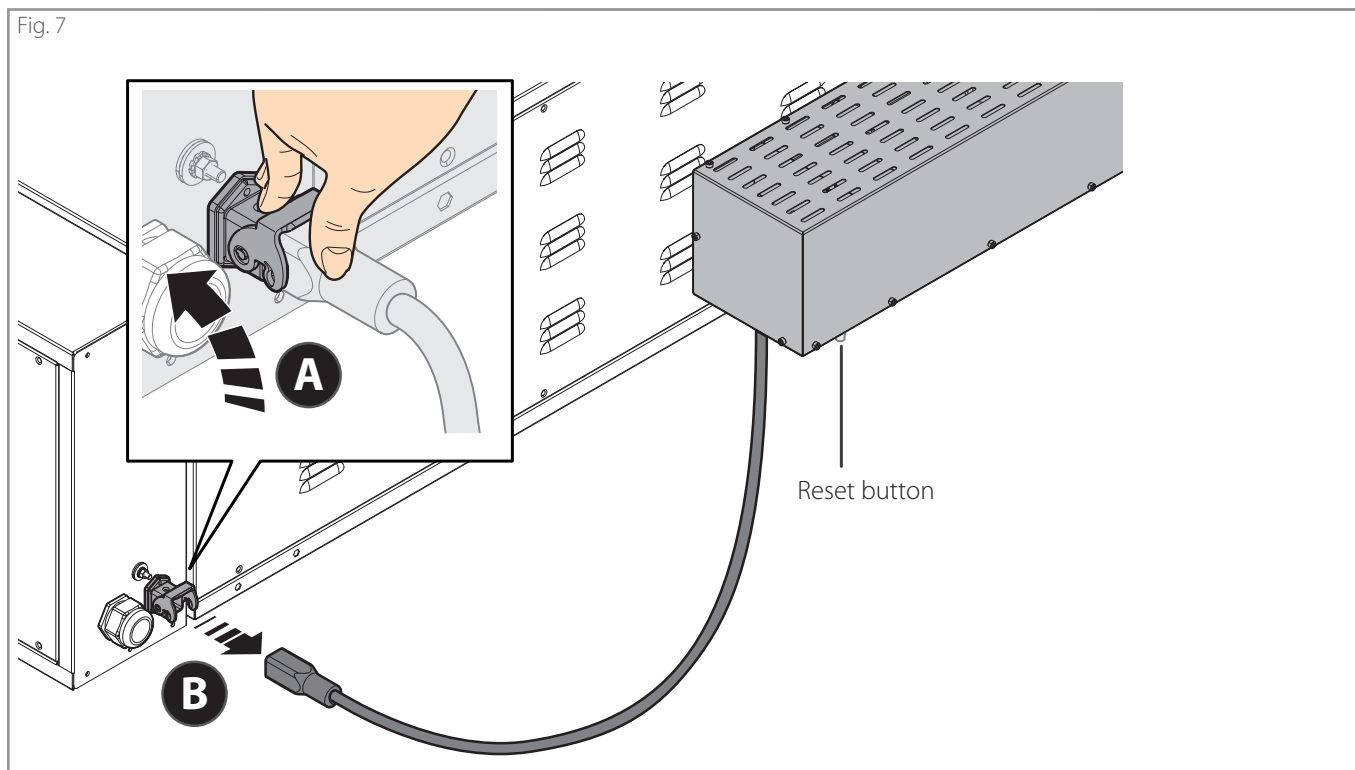


Fig. 7

Problem	Solution
The steamer does not deliver steam	<ul style="list-style-type: none"> • Check that the steamer is correctly connected to the Leonardo oven (plug correctly inserted ► Fig. 7). • Check that the electricity has not been interrupted and that the system's mains switch is turned ON. • Check that the steamer is correctly connected to the water supply by means of a hose and that the water shut-off cock is not turned off. • The steamer, both in the preheating phase and after delivering steam, needs some time to return to temperature; during this interval the "STEAMER" icon turns RED, this means that it is heating the water again and therefore CANNOT be used until the icon returns to GREEN. Recovery time depends on the quantity of steam injected into the chamber, the maximum time is about 15 minutes. If the icon is fixed red, it is necessary to contact the Reseller.

CUPPONE 1963

Cuppone F.lli S.r.l.

Via Sile, 36

31057 Silea (TV) - ITALY

T +39 0422 361143

F +39 0422 360993

info@cuppone.com - www.cuppone.com

